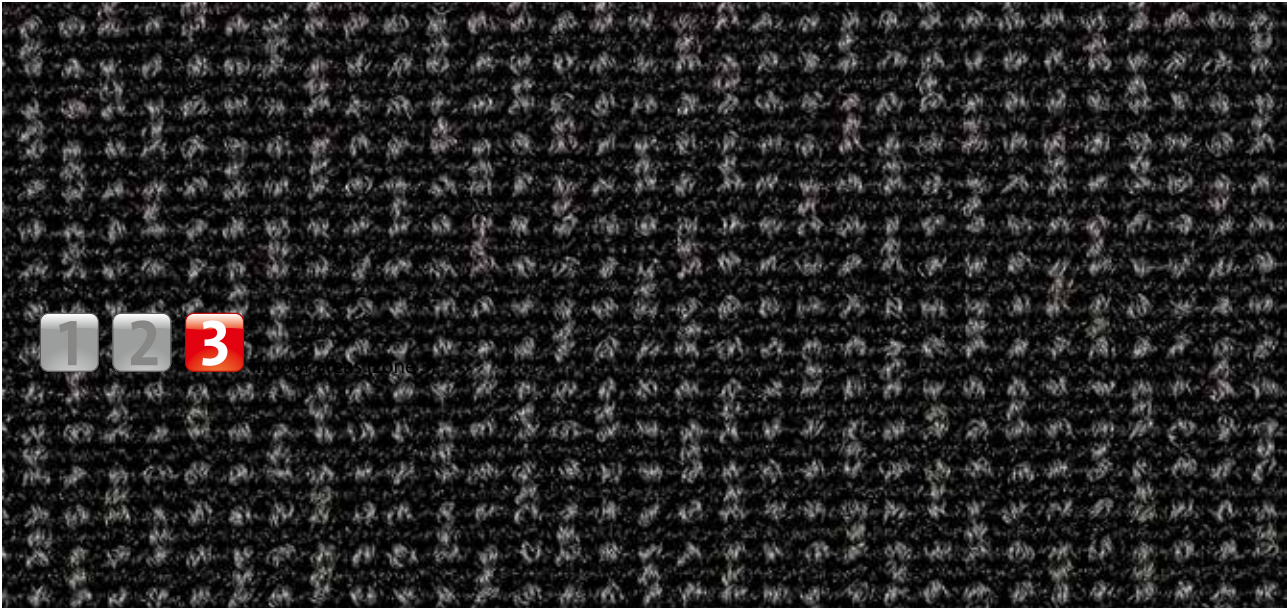


Model CONTURA



Description

A sophisticated clean-off with four eye-catching designs for a special surface effect. The dark appearance and strong textures create a distinctive impression.



Anti-static



DS (EN 13893)



Resistant strength



Cfl-s1



Comfort level: simple



Highly suitable for property

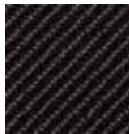
Colours



17.01 check



17.02 transverse



17.03 diagonal



17.04 check-cut

Clean-off system

Model CONTURA

Construction	woven 2-frame
Pile above substrate	100% polyimide combined with fibrilised monofilaments
Substrate material	PES, PP, CO, CV
Backing material	Ethylene vinyl acetate
Pile weight / fibre weight	750
Slip resistance	DS (EN 13893)
Certificates	CE conformity EN 14041 (rolls only)
Supplied as rolls	200 cm wide (no border)
Product characteristics	Soiling and moisture absorption

Laying	Individual rolls or smaller coverings can be laid loose on any smooth floor. For larger areas, and allowing for on-site conditions, we recommend fixed laying with an adhesive suitable for plasticised PVC.
Cleaning	Dirt removal with powerful brush vacuum cleaner. The spray extraction process is recommended for periodic basic cleaning. Cleaning with plenty of water is absolutely no problem, water temperature should not be above 40°C. Do not use chlorinated hydrocarbon (Tetra).
Brand	emco

Subject to technical modifications

emco Bautechnik GmbH · Memeler Straße 30 · D-42781 Haan · Germany · Tel.:
+49 (0)21 29/34 75 80 · Telefax: +49 (0)21 29/34 75 810 · E-Mail: sauberlauf@
emco.de · www.emco-bau.com

