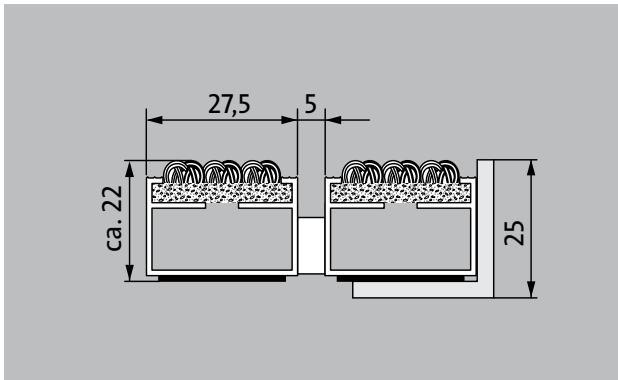


# Model 522 P Care



The premium entrance mat with the robust Care insert is exceptionally abrasion resistant and the number-one choice for the effective reduction of fine dirt. Optimally designed for buildings exposed to average to heavy footfall.

- 1**
- 2**
- 3** Indoor and outdoor (covered, Zone 1+2)

**Description**

Rollable and hard-wearing premium entrance mat with performance insert for supported installation options. Customisable widths and walking depths available without a compensation profile. Available in any geometric shape.



Indoor and outdoor (covered, Zone 1+2)



Street dust, hair, sand, ash, textile fibres, small leaves and twigs, etc.



Damp street dust, damp sand deposits, dust, etc.



R12 slip resistance as per DIN 51130



5 years guarantee



Cfl-s1



class 33 (heavy commercial use)

## Model 522 P Care

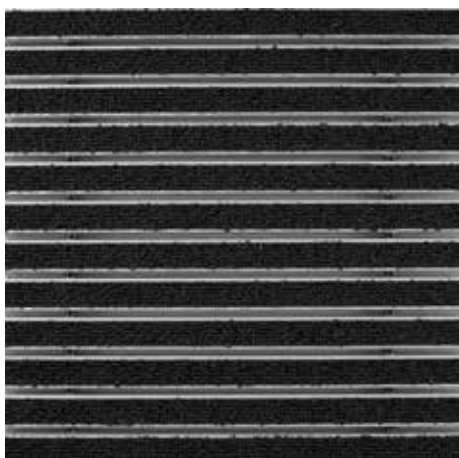
<b>Approx. height (mm)</b>	22	<b>Accessories</b>	
<b>Roll-over and drive-over capability:</b>	Prams		emco installation frame 500: 500-25 AL Aluminium
	Sack-/hand truck		emco installation frame 500: N500-25 AL Aluminium
	Wheelchairs		emco installation frame 500: 500-25 CN Chrome-nickel steel (V2A)
	Light shopping trolleys		emco installation frame 500: N500-25 CN Chrome-nickel steel (V2A)
	hand trolleys		emco LUMINA: LUMINA + LED Aluminium
<b>Standard profile clearance approx. (mm)</b>	5 mm, rubber spacers		emco LUMINA: LUMINA Aluminium
<b>Automatic door systems</b>	Profile clearance of 3 mm available as an option for revolving door drives, in accordance with EN 16005		emco LUMINA: LUMINA VIA Aluminium
			emco ramp edge: A17 Aluminium
<b>Connection</b>	Plastic-coated stainless steel cable		emco T-profile: T22
<b>Max. width/profile length for individual section (mm):</b>	3000		emco cover strip: C22 Chrome-nickel steel (V2A)
<b>Profile width (mm)</b>	27,5		emco INOX®: LINEO 22 Chrome-nickel steel (V2A)
<b>Depth/walking depth for individual section (mm):</b>	3000		emco INOX®: QUADRO 22 Chrome-nickel steel (V2A)
<b>Weight (kg/m<sup>2</sup>)</b>	10,5		Rubber underlay 1 mm: GU 1
<b>Mat divisions as per factory standards or customer specifications</b>	As of a profile length of 3000 mm or a maximum mat weight of 45 kg		Rubber underlay 3 mm: GU 3
<b>Support chassis</b>	Made using rigid aluminium with Premium sound absorbing insulation on the underside		Rubber underlay 5 mm: GU 5
		Mat joining brackets: MV Supplied as standard with mats in several parts	
<b>Tread surface</b>	The robust and exceptionally abrasion-resistant Care insert for the effective reduction of fine dirt.	<b>Suitable for:</b>	
<b>Slip resistance</b>	R 12 slip resistance as per DIN 51130	Residential and care homes	
<b>Flammability</b>	Fire classification for the complete mat system Cf1-s1 in accordance with EN 13501	medical practice	
<b>Pile material</b>	100% PA 6 (polyamide)	Offices and administrative buildings	
<b>Use classification EN1307</b>	class 33 (heavy commercial use)	Family home	
<b>Colour fastness to artificial light ISO 105-B02</b>	good 5-6	Retail sector	
<b>Colour fastness to rubbing ISO 105 X12</b>	good 4-5	Hotel	
<b>Colour fastness to water ISO 105 E01</b>	good 4-5	Kindergarten/Nursery	
<b>Bacterial reduction EHEC ASTM-e2149</b>	11,9 %	Apartment building	
<b>Bacterial reduction staphylococcus aureus ASTM-e2149</b>	45,0 %	School	
<b>Bacterial reduction klebsiella pneumoniae ASTM-e2149</b>	99,8 %	Sports hall	
		<b>Insert certified to TÜV PROFICERT- product interior (Standard)</b>	
		French VOC regulation	
		LEED v4 (outside North America)	
		BREEAM Exemplary Level	
		Belgian VOC regulation	
		AgBB (Committee for Health-related Evaluation of Building Products)	
		MVV TB Appendix 8, 9 / ABG	

# Model 522 P Care

<b>Service and services</b>	Installation service
Construction site advice	Fitting and installation service
Dimensioning	Repairs
Measured using laser measuring device on site.	The product can be disposed of or recycled in an environmentally friendly way.

## Model 522 P Care

### Colours



47.01 anthracite



47.04 beige



47.03 brown



47.02 grey

Subject to technical modifications

emco Bautechnik GmbH · Breslauer Straße 34 - 38 · D-49808 Lingen (Ems)  
· Germany · Phone: +49 (0) 591/9140-500 · Fax: +49 (0) 591/9140-852 · Email:  
bau@emco.de · www.emco-bau.com

**EMCO**