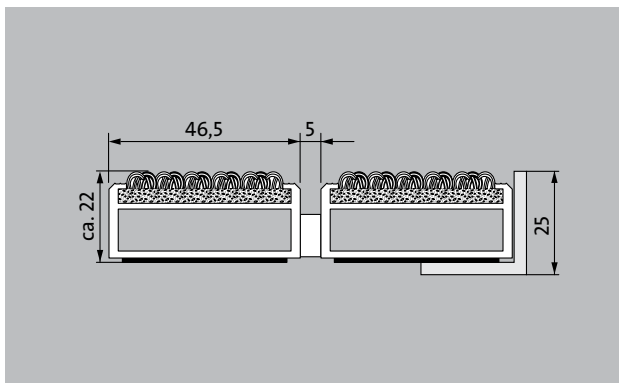
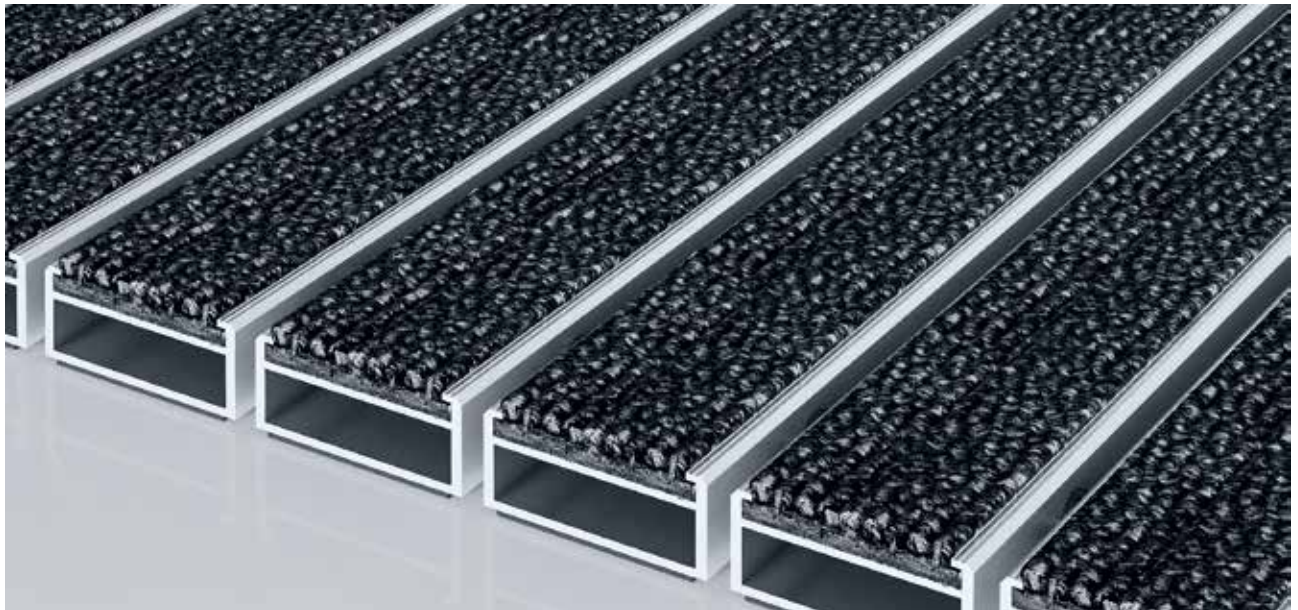




# Model 522 PSL Care



The extra-wide premium entrance mat with the robust Care insert is exceptionally abrasion resistant and the number-one choice for the effective reduction of fine dirt. Optimally designed for buildings exposed to extreme footfall.

- 1
  - 2
  - 3
- Indoor and outdoor (covered, Zone 1+2)

### Description

Roll-up, extremely hard-wearing Premium entrance mat with extra-wide profiles and Performance insert for recess installation. Can be rolled over and even driven over. Customise the width and depth without alignment profile. Available in any geometric shape.



Indoor and outdoor (covered, Zone 1+2)



Street dust, hair, sand, ash, textile fibres, small leaves and twigs, etc.



Damp street dust, damp sand deposits, dust, etc.



R12 slip resistance as per DIN 51130



5 years guarantee



Cfl-s1



class 33 (heavy commercial use)

## Model 522 PSL Care

<b>Approx. height (mm)</b>	22	<b>Bacterial reduction klebsiella pneumoniae ASTM-e2149</b>	99,8 %
<b>Roll-over and drive-over capability:</b>	Prams	<b>Accessories</b>	
	Sack-/hand truck		
	Wheelchairs		
	Light shopping trolleys		
	hand trolleys		
	pallet trucks		
	Electric lift truck		
	Cars		
Lifting platform (i.e scissor lift )			
<b>Standard profile clearance approx. (mm)</b>	5 mm, rubber spacers	emco installation frame 500: 500-25 AL Aluminium	
<b>Automatic door systems</b>	Profile clearance of 3 mm available as an option for revolving door drives, in accordance with EN 16005	emco installation frame 500: N500-25 AL Aluminium	
<b>Connection</b>	Plastic-coated stainless steel cable	emco installation frame 500: 500-25 CN Chrome-nickel steel (V2A)	
<b>Max. width/profile length for individual section (mm):</b>	3000	emco installation frame 500: N500-25 CN Chrome-nickel steel (V2A)	
<b>Profile width (mm)</b>	46.5	emco LUMINA: LUMINA + LED Aluminium	
<b>Depth/walking depth for individual section (mm):</b>	800	emco LUMINA: LUMINA Aluminium	
<b>Weight (kg/m<sup>2</sup>)</b>	14,3	emco LUMINA: LUMINA VIA Aluminium	
<b>Mat divisions as per factory standards or customer specifications</b>	As of a profile length of 3000 mm or a maximum mat weight of 45 kg	emco ramp edge: A17 Aluminium	
<b>Support chassis</b>	Reinforced support chassis made using rigid aluminium with Premium sound absorbing insulation on the underside	emco T-profile: T22	
<b>Tread surface</b>	The robust and exceptionally abrasion-resistant Care insert for the effective reduction of fine dirt.	emco cover strip: C22 Chrome-nickel steel (V2A)	
<b>Slip resistance</b>	R 12 slip resistance as per DIN 51130	emco INOX®: LINEO 22 Chrome-nickel steel (V2A)	
<b>Flammability</b>	Fire classification for the complete mat system Cfl-s1 in accordance with EN 13501	emco INOX®: QUADRO 22 Chrome-nickel steel (V2A)	
<b>Pile material</b>	100% PA 6 (polyamide)	emco dirt collection well: 5000 AL Aluminium	
<b>Use classification EN1307</b>	class 33 (heavy commercial use)	emco dirt collection well: 5000 CN Chrome-nickel steel (V2A)	
<b>Colour fastness to artificial light ISO 105-B02</b>	good 5-6	emco dirt collection well: 5000 AL+ Aluminium	
<b>Colour fastness to rubbing ISO 105 X12</b>	good 4-5	emco dirt collection well: 5000 CN+ Chrome-nickel steel (V2A)	
<b>Colour fastness to water ISO 105 E01</b>	good 4-5	emco dirt collection well: 5022 AL Aluminium	
<b>Bacterial reduction EHEC ASTM-e2149</b>	11,9 %	emco dirt collection well: 5022 CN Chrome-nickel steel (V2A)	
<b>Bacterial reduction staphylococcus aureus ASTM-e2149</b>	45,0 %	emco dirt collection well: 5022 AL+ Aluminium	
		emco dirt collection well: 5022 CN+ Chrome-nickel steel (V2A)	
		emco special frame with substructure: A Version A: with installation frame, rectangular tube profiles, grid support and height adjustment.	
		emco special frame with substructure: B Version B: with installation frame, grid support and rectangular tube profiles	
		emco special frame with substructure: C Type C: with installation frame and rectangular tube profiles	
		Rubber underlay 1 mm: GU 1	
		Rubber underlay 3 mm: GU 3	
		Rubber underlay 5 mm: GU 5	
		Mat joining brackets: MV Supplied as standard with mats in several parts	

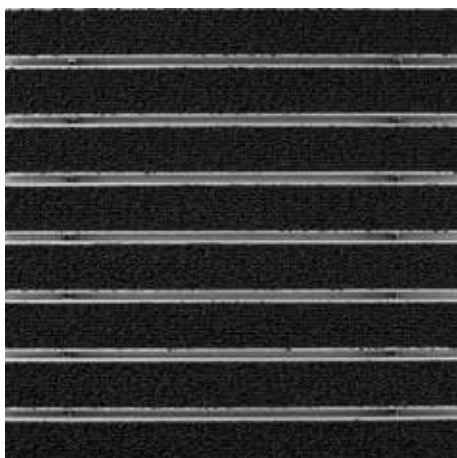
# emco MARSCHALL Premium Large With Care insert

## Model 522 PSL Care

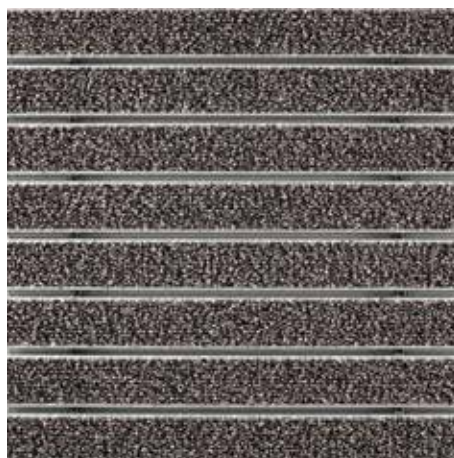
<b>Suitable for:</b>	Sports hall
Residential and care homes	Supermarket
Arena	
medical practice	<b>Insert certified to TÜV PROFICERT- product interior (Standard)</b>
Train station	French VOC regulation
DIY store	LEED v4 (outside North America)
Offices and administrative buildings	BREEAM Exemplary Level
Family home	Belgian VOC regulation
Shopping centre	AgBB (Committee for Health-related Evaluation of Building Products)
Retail sector	MVV TB Appendix 8, 9 / ABG
University / Higher education institution	
airport	<b>Service and services</b>
Hotel	Construction site advice
Industry	Dimensioning
Kindergarten/Nursery	Measured using laser measuring device on site.
Clinic/Hospital	Installation service
Warehouse	Fitting and installation service
Apartment building	Ribbed carpet strips can be subsequently replaced on site by a emco service engineer (mobile ribbed carpet replacement machine).
Trade fair	Repairs
School	The product can be disposed of or recycled in an environmentally friendly way.

## Model 522 PSL Care

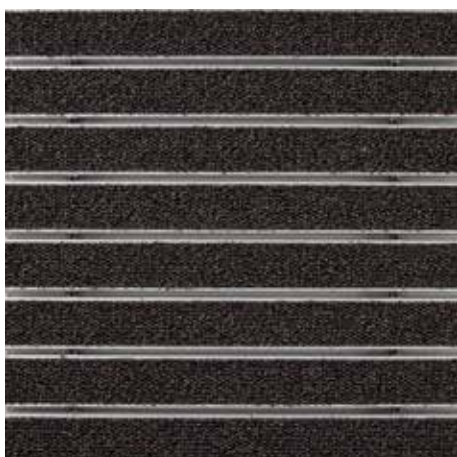
### Colours



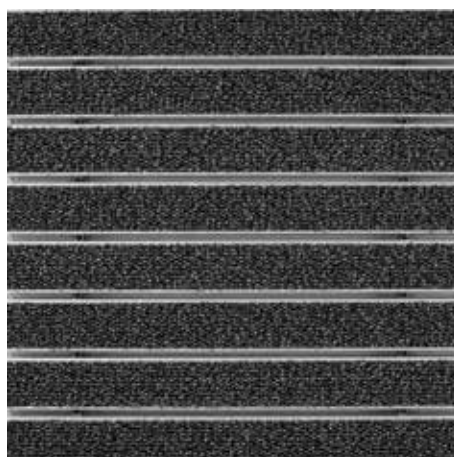
47.01 anthracite



47.04 beige



47.03 brown



47.02 grey

Subject to technical modifications

emco Bautechnik GmbH · Breslauer Straße 34 - 38 · D-49808 Lingen (Ems)  
· Germany · Phone: +49 (0) 591/9140-500 · Fax: +49 (0) 591/9140-852 · Email:  
bau@emco.de · www.emco-bau.com

**EMCO**