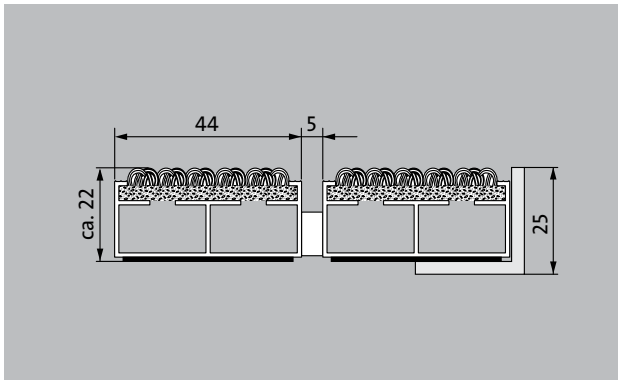
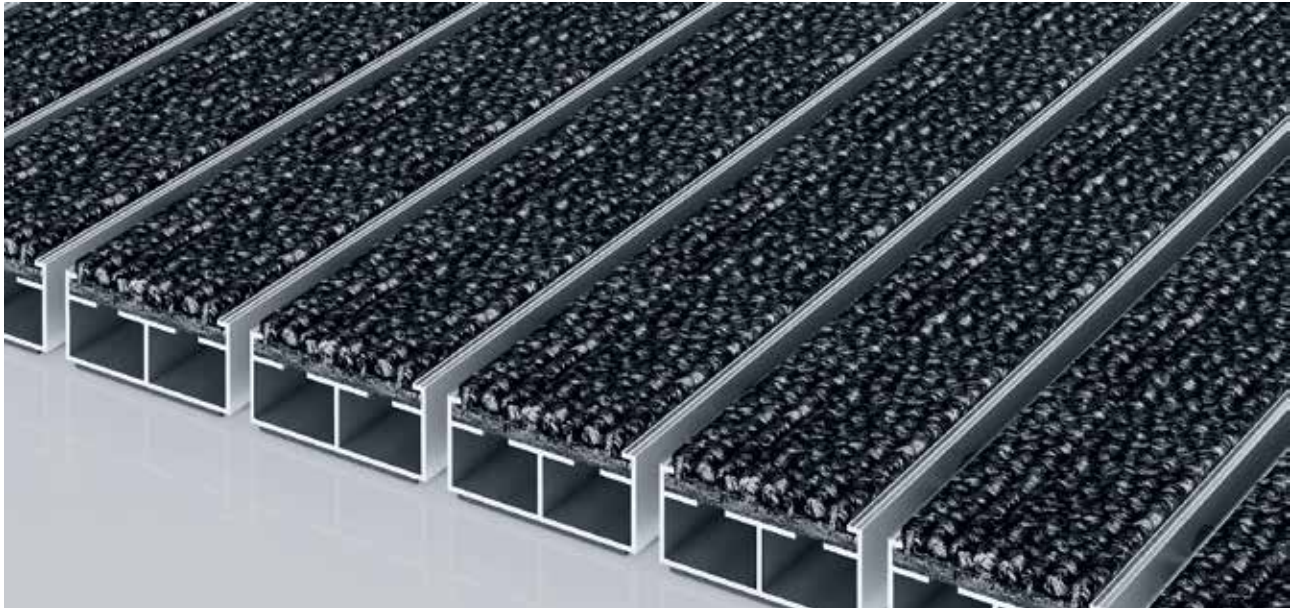




Model 522 PL Care



The extra-wide premium entrance mat with the robust Care insert is exceptionally abrasion resistant and the number-one choice for the effective reduction of fine dirt. Optimally designed for buildings exposed to average to heavy footfall.

- 1
 - 2
 - 3
- Indoor and outdoor (covered, Zone 1+2)

Description

Rollable and hard-wearing premium entrance mat with extra-wide profile bars and performance insert for supported installation options. Customisable widths and walking depths available without a compensation profile. Available in any geometric shape.



Indoor and outdoor (covered, Zone 1+2)



Street dust, hair, sand, ash, textile fibres, small leaves and twigs, etc.



Damp street dust, damp sand deposits, dust, etc.



R 12 slip resistance as per DIN 51130



5 years guarantee



Cfl-s1



class 33 (heavy commercial use)

Model 522 PL Care

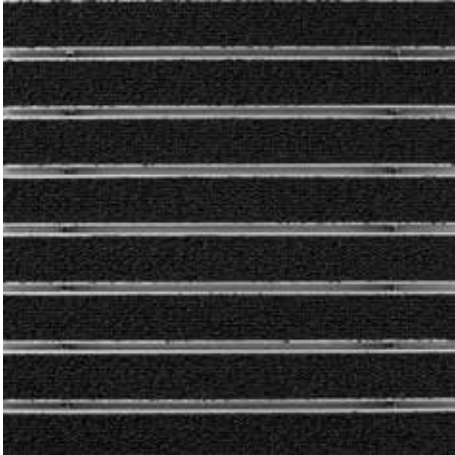
Approx. height (mm)	22	Accessories	
Roll-over and drive-over capability:	Prams		emco installation frame 500: 500-25 AL Aluminium
	Sack-/hand truck		emco installation frame 500: N500-25 AL Aluminium
	Wheelchairs		emco installation frame 500: 500-25 CN Chrome-nickel steel (V2A)
	Light shopping trolleys		emco installation frame 500: N500-25 CN Chrome-nickel steel (V2A)
	hand trolleys		emco LUMINA: LUMINA + LED Aluminium
Standard profile clearance approx. (mm)	5 mm, rubber spacers		emco LUMINA: LUMINA Aluminium
Automatic door systems	Profile clearance of 3 mm available as an option for revolving door drives, in accordance with EN 16005		emco LUMINA: LUMINA VIA Aluminium
			emco ramp edge: A17 Aluminium
Connection	Plastic-coated stainless steel cable		emco T-profile: T22
Max. width/profile length for individual section (mm):	3000		emco cover strip: C22 Chrome-nickel steel (V2A)
Profile width (mm)	44		emco INOX®: LINEO 22 Chrome-nickel steel (V2A)
Depth/walking depth for individual section (mm):	1500		emco INOX®: QUADRO 22 Chrome-nickel steel (V2A)
Weight (kg/m²)	10,5		Rubber underlay 1 mm: GU 1
Mat divisions as per factory standards or customer specifications	As of a profile length of 3000 mm or a maximum mat weight of 45 kg		Rubber underlay 3 mm: GU 3
			Rubber underlay 5 mm: GU 5
Support chassis	Made using rigid aluminium with Premium sound absorbing insulation on the underside	Mat joining brackets: MV Supplied as standard with mats in several parts	
Tread surface	The robust and exceptionally abrasion-resistant Care insert for the effective reduction of fine dirt.	Suitable for:	
Slip resistance	R 12 slip resistance as per DIN 51130	Residential and care homes	
Flammability	Fire classification for the complete mat system Cf1-s1 in accordance with EN 13501	medical practice	
Pile material	100% PA 6 (polyamide)	Offices and administrative buildings	
Use classification EN1307	class 33 (heavy commercial use)	Family home	
Colour fastness to artificial light ISO 105-B02	good 5-6	Retail sector	
Colour fastness to rubbing ISO 105 X12	good 4-5	Hotel	
Colour fastness to water ISO 105 E01	good 4-5	Kindergarten/Nursery	
Bacterial reduction EHEC ASTM-e2149	11,9 %	Apartment building	
Bacterial reduction staphylococcus aureus ASTM-e2149	45,0 %	School	
Bacterial reduction klebsiella pneumoniae ASTM-e2149	99,8 %	Sports hall	
		Insert certified to TÜV PROFICERT- product interior (Standard)	
		French VOC regulation	
		LEED v4 (outside North America)	
		BREEAM Exemplary Level	
		Belgian VOC regulation	
		AgBB (Committee for Health-related Evaluation of Building Products)	
		MVV TB Appendix 8, 9 / ABG	

Model 522 PL Care

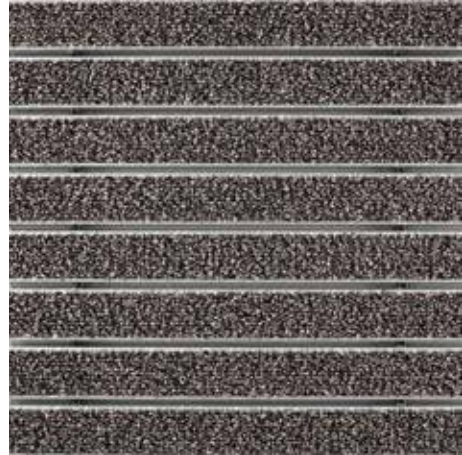
Service and services	Installation service
Construction site advice	Fitting and installation service
Dimensioning	Repairs
Measured using laser measuring device on site.	The product can be disposed of or recycled in an environmentally friendly way.

Model 522 PL Care

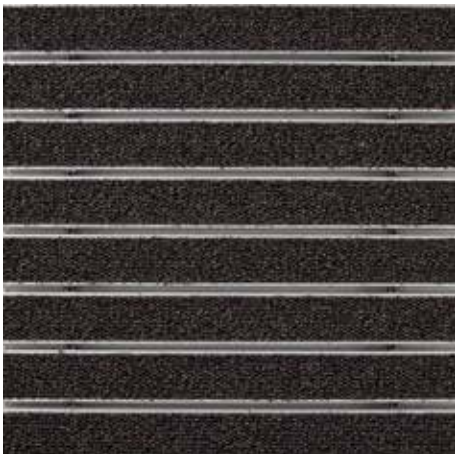
Colours



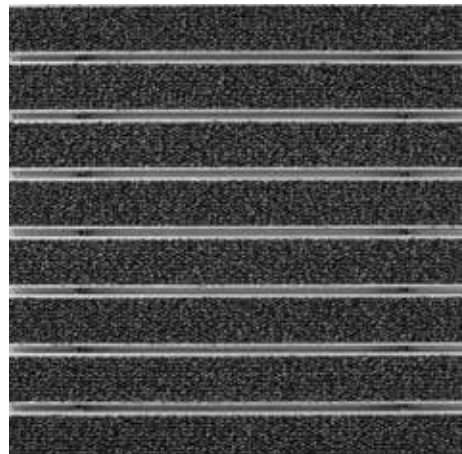
47.01 anthracite



47.04 beige



47.03 brown



47.02 grey

Subject to technical modifications

emco Bautechnik GmbH · Breslauer Straße 34 - 38 · D-49808 Lingen (Ems)
· Germany · Phone: +49 (0) 591/9140-500 · Fax: +49 (0) 591/9140-852 · Email:
bau@emco.de · www.emco-bau.com

EMCO