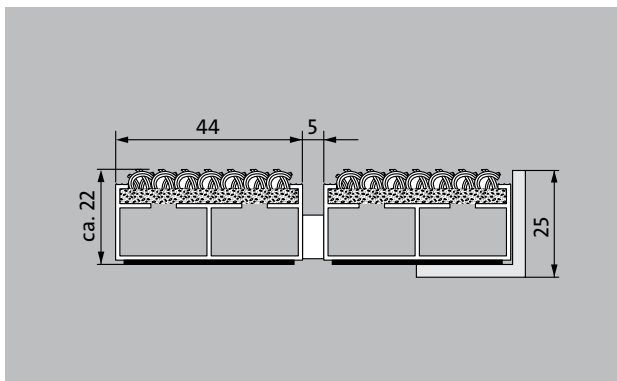


## Model 522 LR



The extra-wide original entrance mat with the effective, coarse-fibre rib insert is exceptionally abrasion resistant and offers maximum dimensional stability. Particularly ideal for collecting fine dirt. Optimally designed for buildings exposed to average to heavy footfall.

**1** **2** **3** Indoor and outdoor (covered, Zone 1+2)

### Description

Rollable and hard-wearing original entrance mat with extra-wide profile bars and standard insert for supported installation options. Customisable widths and walking depths available without a compensation profile. Available in any geometric shape.



Indoor and outdoor (covered, Zone 1+2)



Street dust, hair, sand, ash, textile fibres, small leaves and twigs, etc.



R 11 slip resistance as per DIN 51130



4 year warranty

# emco DIPLOMAT Original Large With ribbed carpet insert

## Model 522 LR

<b>Approx. height (mm)</b>	22	<b>Accessories</b>
<b>Roll-over and drive-over capability:</b>	Prams	emco installation frame 500: 500-25 AL Aluminium
	Sack-/hand truck	emco installation frame 500: N500-25 AL Aluminium
	Wheelchairs	emco installation frame 500: 500-25 CN Chrome-nickel steel (V2A)
	Light shopping trolleys	emco installation frame 500: N500-25 CN Chrome-nickel steel (V2A)
	hand trolleys	emco LUMINA: LUMINA + LED Aluminium
<b>Standard profile clearance approx. (mm)</b>	5 mm, rubber spacers	emco LUMINA: LUMINA Aluminium
<b>Automatic door systems</b>	Profile clearance of 3 mm available as an option for revolving door drives, in accordance with EN 16005	emco LUMINA: LUMINA VIA Aluminium
<b>Connection</b>	Plastic-coated stainless steel cable	emco ramp edge: A17 Aluminium
<b>Max. width/profile length for individual section (mm):</b>	3000	emco T-profile: T22
<b>Profile width (mm)</b>	44	emco cover strip: C22 Chrome-nickel steel (V2A)
<b>Depth/walking depth for individual section (mm):</b>	1500	emco INOX®: LINEO 22 Chrome-nickel steel (V2A)
<b>Weight (kg/m<sup>2</sup>)</b>	9.2	emco INOX®: QUADRO 22 Chrome-nickel steel (V2A)
<b>Mat divisions as per factory standards or customer specifications</b>	As of a profile length of 3000 mm or a maximum mat weight of 45 kg	Rubber underlay 1 mm: GU 1
<b>Support chassis</b>	Made using rigid aluminium with sound absorbing insulation on the underside	Rubber underlay 3 mm: GU 3
<b>Tread surface</b>	Recessed, robust, weather-proof, ribbed carpet strips.	Rubber underlay 5 mm: GU 5
<b>Slip resistance</b>	R 11 slip resistance as per DIN 51130	Mat joining brackets: MV Supplied as standard with mats in several parts
<b>Flammability</b>	Insert for Light Grey and Anthracite ribbed carpet colours available on request (surcharge applicable) with fire classification Cf1-s1 according to EN 13501.	<b>Suitable for:</b>
<b>Pile material</b>	100% PP (polypropylene)	Residential and care homes
<b>Colour fastness to artificial light ISO 105-B02</b>	good 6	medical practice
<b>Colour fastness to rubbing ISO 105 X12</b>	good 4	Offices and administrative buildings
<b>Colour fastness to water ISO 105 E01</b>	good 5	Family home
		Retail sector
		Hotel
		Kindergarten/Nursery
		Apartment building
		School
		Sports hall
		<b>Insert certified to TÜV PROFICERT- product interior (Standard)</b>
		French VOC regulation
		LEED v4 (outside North America)
		BREEAM Exemplary Level
		Belgian VOC regulation
		AgBB (Committee for Health-related Evaluation of Building Products)
		MVV TB Appendix 8, 9 / ABG

# emco DIPLOMAT Original Large With ribbed carpet insert

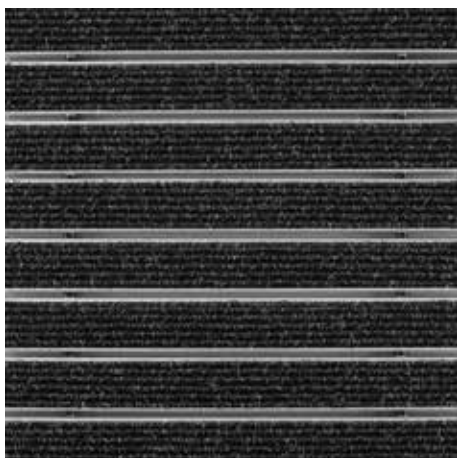
---

## Model 522 LR

<b>Service and services</b>	Installation service
Construction site advice	Fitting and installation service
Dimensioning	Repairs
Measured using laser measuring device on site.	The product can be disposed of or recycled in an environmentally friendly way.

## Model 522 LR

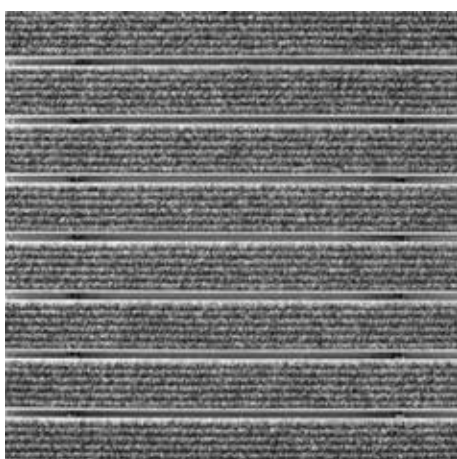
### Colours



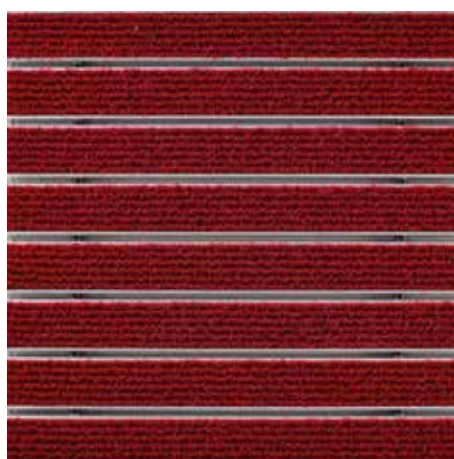
Anthracite no. 200



Brown no. 485



Light grey no. 220



Red no. 305



Sand no. 430

Subject to technical modifications

emco Bautechnik GmbH · Breslauer Straße 34 - 38 · D-49808 Lingen (Ems)  
· Germany · Phone: +49 (0) 591/9140-500 · Fax: +49 (0) 591/9140-852 · Email:  
bau@emco.de · www.emco-bau.com