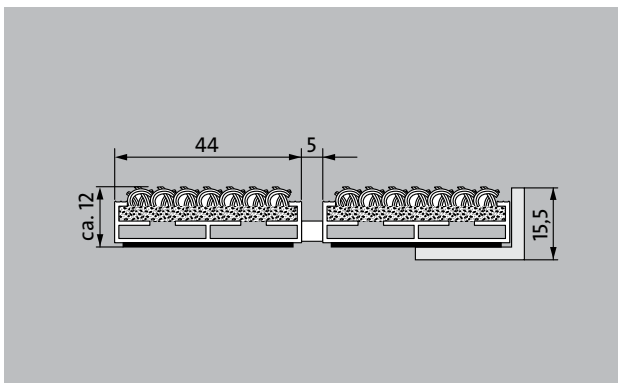




Model 512 LR



The extra-wide original entrance mat with the effective, coarse-fibre rib insert is exceptionally abrasion resistant and offers maximum dimensional stability. Particularly ideal for collecting fine dirt. Optimally designed for buildings exposed to average to heavy footfall.

- 1
- 2
- 3 Indoor and outdoor (covered, Zone 1+2)

Description

Rollable and hard-wearing original entrance mat with extra-wide profile bars and standard insert for supported installation options. Customisable widths and walking depths available without a compensation profile. Available in any geometric shape.



Indoor and outdoor (covered, Zone 1+2)



Street dust, hair, sand, ash, textile fibres, small leaves and twigs, etc.



R 11 slip resistance as per DIN 51130



4 year warranty

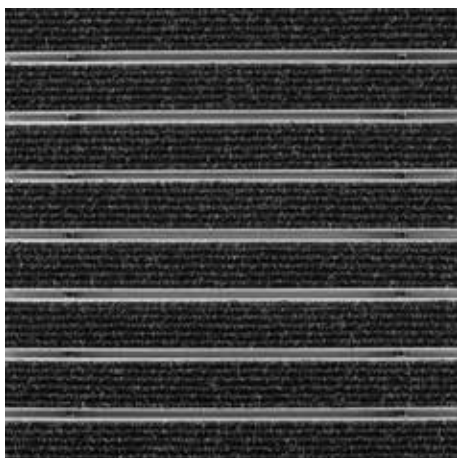
emco DIPLOMAT Original Large With ribbed carpet insert

Model 512 LR

Approx. height (mm)	12	Accessories
Roll-over and drive-over capability:	Prams	emco installation frame 500: 500-15 AL Aluminium
	Sack-/hand truck	emco installation frame 500: 500-15 CN Chrome-nickel steel (V2A)
	Wheelchairs	emco ramp edge: A12 Aluminium
Standard profile clearance approx. (mm)	5 mm, rubber spacers	emco cover strip: C12 Chrome-nickel steel (V2A)
Automatic door systems	Profile clearance of 3 mm available as an option for revolving door drives, in accordance with EN 16005	emco INOX®: LINEO 12 Chrome-nickel steel (V2A)
Connection	Plastic-coated stainless steel cable	Rubber underlay 1 mm: GU 1
Max. width/profile length for individual section (mm):	3000	Rubber underlay 3 mm: GU 3
Profile width (mm)	44	Rubber underlay 5 mm: GU 5
Depth/walking depth for individual section (mm):	1500	Mat joining brackets: MV Supplied as standard with mats in several parts
Weight (kg/m²)	7.7	Suitable for:
Mat divisions as per factory standards or customer specifications	from a profile length of 3000 mm or a maximum mat weight of 25 kg	Residential and care homes
Support chassis	Made using rigid aluminium with sound absorbing insulation on the underside	medical practice
Tread surface	Recessed, robust, weather-proof, ribbed carpet strips.	Family home
Slip resistance	R 11 slip resistance as per DIN 51130	Apartment building
Flammability	Insert for Light Grey and Anthracite ribbed carpet colours available on request (surcharge applicable) with fire classification Cfl-s1 according to EN 13501.	Sports hall
		Insert certified to TÜV PROFiCERT- product interior (Standard)
Pile material	100% PP (polypropylene)	French VOC regulation
Colour fastness to artificial light ISO 105-B02	good 6	LEED v4 (outside North America)
Colour fastness to rubbing ISO 105 X12	good 4	BREEAM Exemplary Level
Colour fastness to water ISO 105 E01	good 5	Belgian VOC regulation
		AgBB (Committee for Health-related Evaluation of Building Products)
		MVV TB Appendix 8, 9 / ABG
		Service and services
		Construction site advice
		Dimensioning
		Measured using laser measuring device on site.
		Installation service
		Fitting and installation service
		Repairs
		The product can be disposed of or recycled in an environmentally friendly way.

Model 512 LR

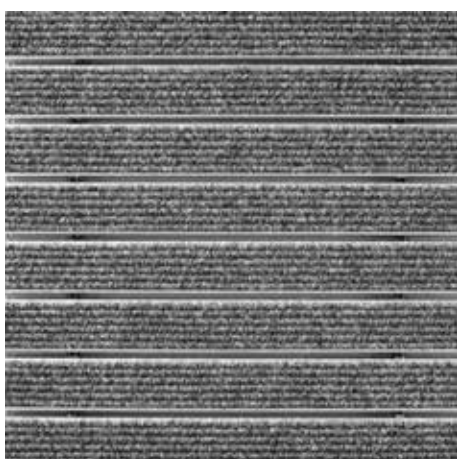
Colours



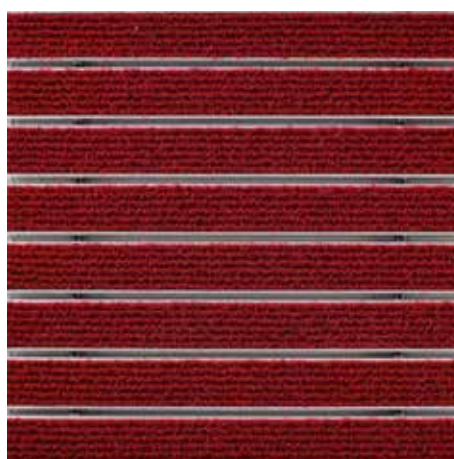
Anthracite no. 200



Brown no. 485



Light grey no. 220



Red no. 305



Sand no. 430

Subject to technical modifications

emco Bautechnik GmbH · Breslauer Straße 34 - 38 · D-49808 Lingen (Ems)
· Germany · Phone: +49 (0) 591/9140-500 · Fax: +49 (0) 591/9140-852 · Email:
bau@emco.de · www.emco-bau.com