



emco dirt collection wells

**For increased dirt levels in heavily
frequented entrance areas**

Designing clean entrances

EMCO

emco dirt collection wells

Increased dirt uptake with heavy loading

Even extremely high dirt levels in heavily frequented entrance areas can be handled with ease using emco dirt collection wells. When combined with the heavy-duty MARSCHALL and PLAZA entrance mats, they form a single unrivalled unit in terms of cleaning efficiency, water drainage and practicality. They also extend the deep-cleaning intervals.



Multi-piece well connectors with integral drainage system



Variable well heights



Increased dirt uptake

Did you know ...

- ... you can choose the height of the well?
- ... a heavy-duty version of the dirt collection well is also available?
- ... the well can be easily installed as there are no screw fixings on the underside?
- ... multiple wells can be connected to each other with a single drain?
- ... you can specify the length of the waste pipe for connection to the greywater system?
- ... there are three drain sizes?



Extended deep-cleaning intervals



Also suitable for heavy loading



Design freedom



Integral drainage available in 3 sizes



Variable length waste pipe



emco dirt collection wells

Maximum design freedom for every situation

With emco dirt collection wells, customised curved or chamfered shapes, can be easily achieved. Architecturally inviting entrances, in particular, demand a harmoniously integrated entrance mat. The wells are placed in the area with the highest dirt frequency. The entrance mat is specifically adapted to the shape of the dirt collection well (type 5022) or extends as far as your want beyond it (type 5000) for greater creative freedom. Several variants are available including an extremely heavy-duty option.

emco dirt collection wells

From a visual and functional perspective, the entrance mat is manufactured either in the same size without a frame, or – more commonly – with a frame. The aluminium material is welded watertight and has a completely smooth interior for easy cleaning. Dirt collection wells are also available on request in stainless steel. The support profiles are made from the same material as the frame. They are spaced at distances from 150 mm to a maximum of 300 mm, with recesses for all-round water drainage.

The support profiles are always installed perpendicular to the entrance mat profiles for reasons of stability.

Perfectly matched to the on-site conditions

The drainage system consists of a flat, corrosion-resistant stainless steel strainer and an aluminium or stainless steel waste pipe (depending on the well material) for onward connection to the waste water system.

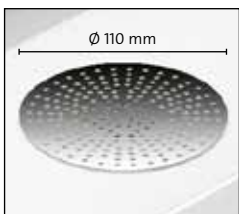
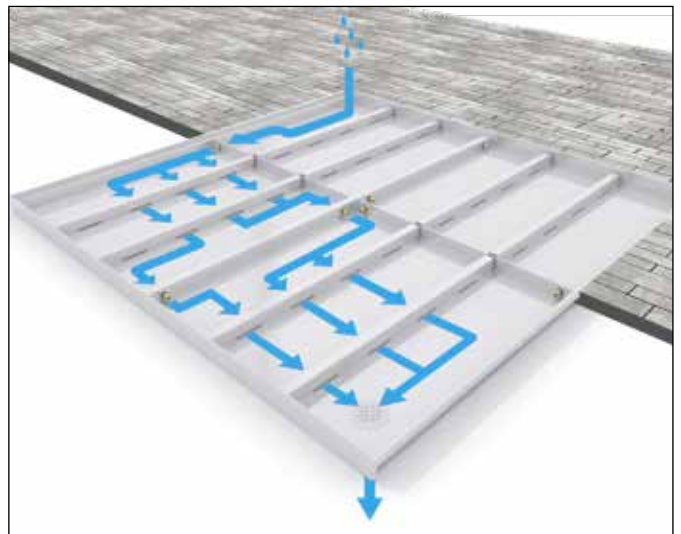
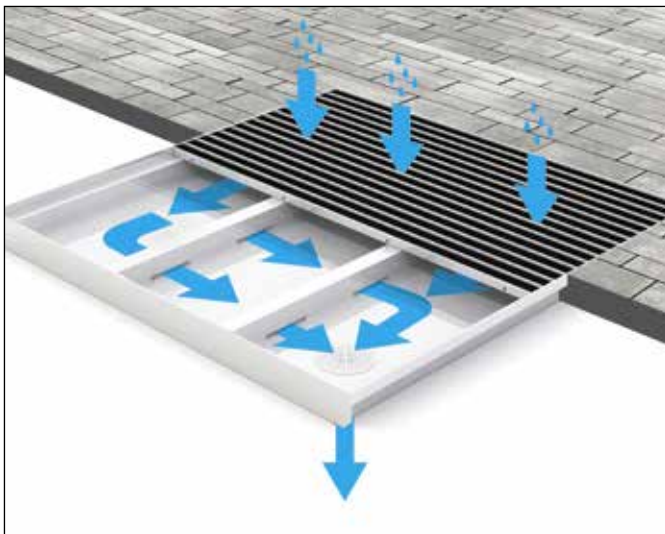
Easier and quicker installation due to the well's smooth underside.

Special cases: With types 5000 and 5000+, there is no surrounding edging frame for the entrance mat. MARSCHALL PREMIUM, MARSCHALL ORIGINAL and PLAZA are larger due to their special design and can be fitted with an additional frame on request. With types 5022 and 5022+, the frame for the emco entrance mat is incorporated into the well.

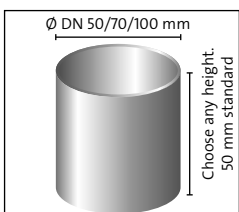
Heavy-duty solutions: In the event of heavy loading, such as overrolling with electric pallet trucks, types 5000+ and 5022+ are to be used. The mat/well system has a galvanised steel grid reinforcement and the support profiles are spaced at a maximum of 150 mm. This provides extra stability.

Well set with water overflow connections

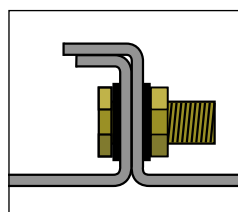
An emco dirt collection well unit can consist of either a single well, or multiple wells that are assembled in a modular fashion. Width, depth and even height are variable. You can specify every dimension of the unit.



Stainless steel strainer: Ø 110 mm. The aluminium or steel waste pipe can be specified to any length (up to 300 mm) so that the well can be more easily connected to the waste water system. The pipe is available in three diameters: Ø DN 50, DN 70 or DN 100.



We recommend including an outlet in every well segment. However, if only one drain is available beneath the well unit, multiple wells can be provided with brass water overflow connections. These also connect the wells together.



emco dirt collection wells

emco dirt collection wells can accommodate any requirement and are available in either:

Aluminium or stainless steel and any construction height.

With or without edging frame for the entrance mat.

With or without grid for extra stability in the event of heavy overrolling.

No matter which you choose, every variant captures large volumes of dirt and contaminated water. Available on request with drainage system (except types 5512 to 5542).

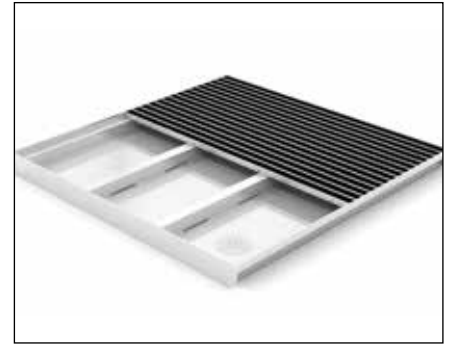
Type 5000



Despite the well's rectangular shape, you can be as creative as you like with the mats. Architecturally inviting entrances, in particular, demand a harmoniously integrated entrance mat. In these cases, the wells are located where the maximum dirt levels occur and the entrance mats are extended as far as you want beyond them.

There is no surrounding edging frame for the entrance mat. A frame can be added to the entrance mat you have chosen if required.

Type 5022

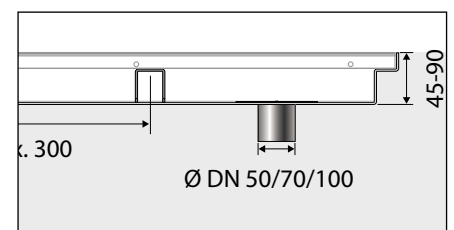
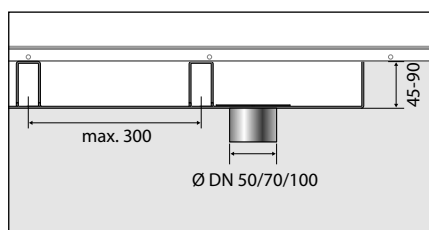


The support for the entrance mat is incorporated into the well. A separate installation frame is therefore no longer necessary. The entrance mat and well form a single unit and are 100% flush with each other, even in special shapes.

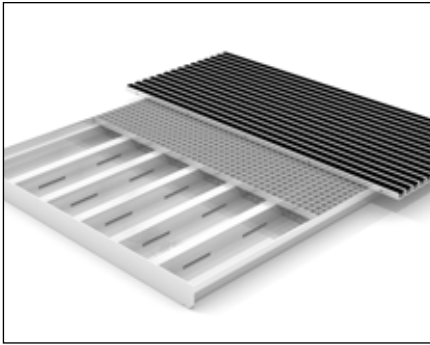
| |
|--------------------------------|
| Type |
| Material |
| Material thickness |
| Max. well dimensions |
| Standard design |
| Drainage option? |
| Standard drain position |
| Waste pipe length |
| Grid |
| U-profile distance |
| Edging (height) |
| Total height |
| For emco entrance mat |

| 5000AL | 5000CN |
|--|------------------|
| aluminium | stainless steel |
| 3 mm | 2 mm |
| 2,800 x 1,300 mm | 1,300 x 1,300 mm |
| no drain | |
| yes | |
| bottom right | |
| variable up to 300 mm, standard: 50 mm | |
| no | |
| 300 mm | |
| - | - |
| variable, standard: 70 mm | |
| MARSCHALL and PLAZA | |

| 5022AL | 5022CN |
|--|------------------|
| aluminium | stainless steel |
| 3 mm | 2 mm |
| 2,800 x 1,300 mm | 1,300 x 1,300 mm |
| no drain | |
| yes | |
| bottom right | |
| variable up to 300 mm, standard: 50 mm | |
| no | |
| 300 mm | |
| 25 mm | 24 mm |
| variable, standard: 70 mm | |
| MARSCHALL | |



Type 5000+



Designed for extreme loading. Overrolling with, for example, carts, shopping trolleys or electric pallet trucks is not a problem. Thanks to the short distances between the support profiles and an integral grid, these dirt collection wells are the best solution for heavy loads.

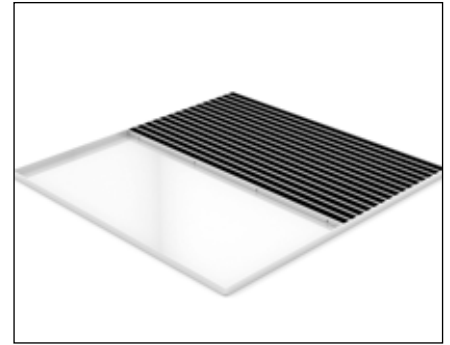
Other properties as for Type 5000

Type 5022+



Other properties as for Type 5022

Types 5512, 5517, 5522, 5542

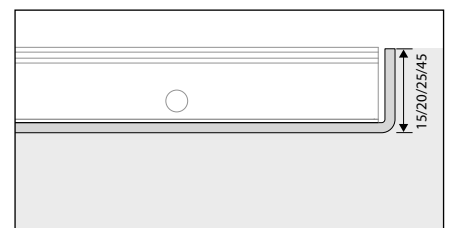
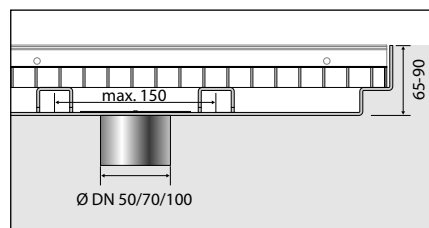
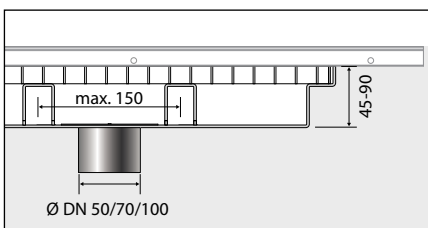


Type 55xx wells sit flush with the entrance mat across their width, depth and height. The well thus functions as a mat well with a frame recessed into the ground. These wells make installation in a floor screed significantly easier. The wells are also easy to clean and thus protect downstream floorings as well as the substructure.

| 5000AL+ | 5000CN+ |
|--|------------------|
| aluminium | stainless steel |
| 3 mm | 2 mm |
| 2,800 x 1,300 mm | 1,300 x 1,300 mm |
| no drain | |
| yes | |
| bottom right | |
| variable up to 300 mm, standard: 50 mm | |
| yes | |
| 150 mm | |
| 23 mm | 22 mm |
| variable, standard: 70 mm | |
| MARSCHALL and PLAZA | |

| 5022AL+ | 5022CN+ |
|--|------------------|
| aluminium | stainless steel |
| 3 mm | 2 mm |
| 2,800 x 1,300 mm | 1,300 x 1,300 mm |
| no drain | |
| yes | |
| bottom right | |
| variable up to 300 mm, standard: 50 mm | |
| yes | |
| 150 mm | |
| 47 mm | 47 mm |
| variable, standard: 70 mm | |
| MARSCHALL | |

| 55xxAL | 55xxCN |
|---|---|
| aluminium | stainless steel |
| 3 mm | 2 mm |
| 2,800 x 1,300 mm | 1,300 x 1,300 mm |
| no drain | |
| no | |
| - | |
| - | |
| no | |
| - | |
| depending on mat type: 15, 20, 25 and 45 mm | depending on mat type: 14, 19, 24 and 44 mm |
| MARSCHALL/DIPLOMAT/PLAZA | |



emco **substructure**

Extremely effective with long cleaning intervals

As an especially effective alternative to emco dirt-collection wells, emco substructures can handle even exceptionally high dirt levels with particularly long cleaning intervals. Versions B and C are available in fixed installation heights, while version A provides for flexible heights up to a maximum of 280 mm. emco substructures are designed for use in combination with the more resilient emco MARSCHALL PREMIUM and ORIGINAL, and PLAZA entrance mats.

emco **dirt-collection well with substructure**



Version A with grid with MARSCHALL PREMIUM and MARSCHALL ORIGINAL in 22-mm height



Version B with grid with MARSCHALL PREMIUM and MARSCHALL ORIGINAL in 22-mm height



Version A without grid with PLAZA 542 S/R



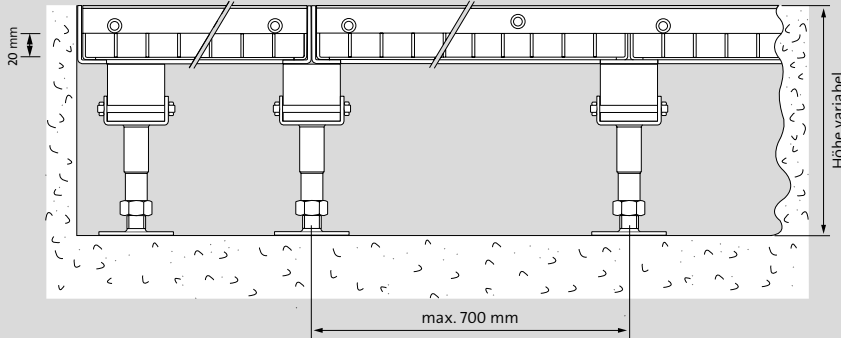
Version C without grid with PLAZA 542 S/R



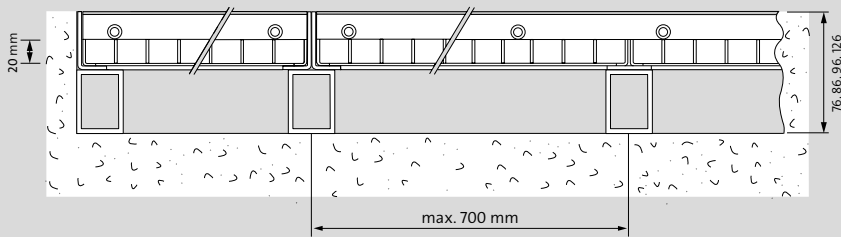
Version A with grid and emco MARSCHALL 522 S/R in floor profile

emco dirt-collection wells – substructures

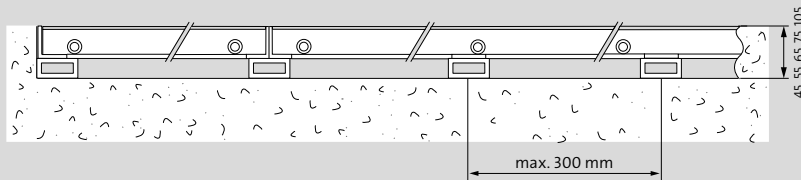
Substructure version A*:
emco special frame with grid support and height adjustment mechanism



Substructure version B*:
emco special frame with grid support and rectangular tube profiles



Substructure version C*:
emco special frame with rectangular tube profiles



*Only for foot and lightweight wheeled traffic, not suitable for pallet trucks or similar.

| Version | Frame dimensions (H x W x D) in mm | Construction heights in mm |
|-------------|------------------------------------|----------------------------|
| A with grid | 46 x 25 x 3 | 195 - 280 |
| B with grid | 46 x 25 x 3 | 76, 86, 96, 126 |
| C w/o grid | 25 x 30 x 3 | 45, 55, 65, 75, 105 |
| C w/o grid | 46 x 25 x 3 | 66, 76, 86, 96, 126 |

Substructure version A:

A supporting substructure (hot-dip galvanized) consisting of grids and tube profiles screwed to the underside; also featuring height-adjustable supports made of galvanized steel.

Substructure version B:

A supporting substructure (hot-dip galvanized) consisting of grids and tube profiles screwed to the underside.

Substructure version C:

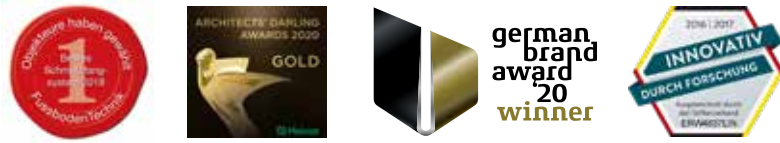
A supporting substructure (hot-dip galvanized) consisting of tube profiles screwed to the underside.

Structure: emco installation frames consist of angled profiles (chromium-nickel steel); the corners are mitred and screwed into place using gusset plates. Large widths can be separated by using two angled profiles screwed together. The frames are supplied with wall anchors. Installation frame material: 1.4301 (V2A).

Certificates



Awards



Memberships/Associations



emco service



We know how varied project requirements can be. That's why we are happy to work with you to develop solutions for your project as well as offering many other practical services:

- telephone, online and personal project guidance
- technical measuring service
- personal contact at www.emco-bau.com
- Texts for invitations to tender can be downloaded from www.emco-bau.com – www.ausschreiben.de

emco Bautechnik GmbH
Postfach 1860
D-49803 Lingen (Ems)
GERMANY
Tel. +49 (0) 591 9140-500
Fax +49 (0) 591 9140-852
bau@emco.de

www.emco-bau.com



A member of the