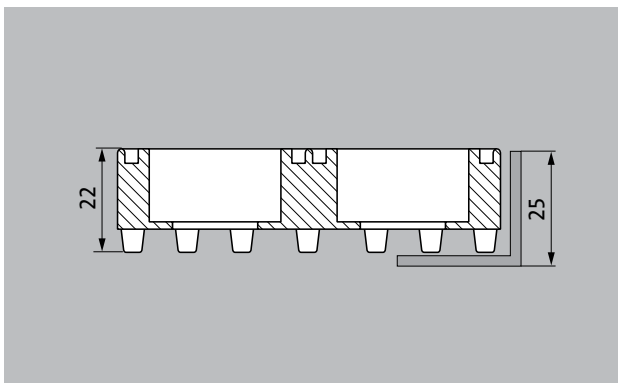


Model Structura 220 FR

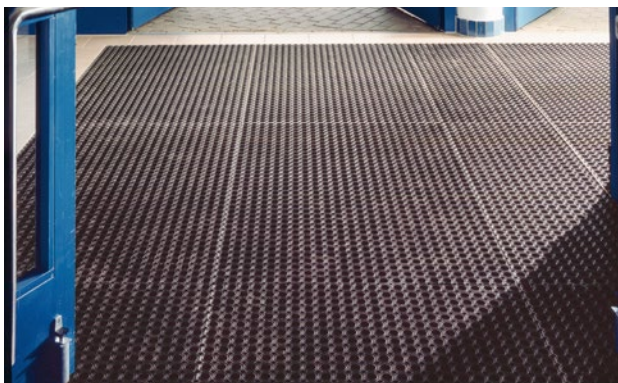


Ideal for entrances and stairways in outdoor areas, industrial buildings, exhibition halls and sports halls, ski lifts, ship decks and landing stages

1 **2** **3** Outside (Zone 1)

Description

Extremely robust, general purpose mat with excellent cleaning effect (for protection against coarse dirt). Because it is easy to clean and offers a straightforward water drainage system as well as a high level of temperature resistance (-30 to +50 °C), it is also ideal for outdoor areas with snow and high levels of moisture.



Outside (Zone 1)



Outside (Zone 1)



Street dust, hair, sand, ash, textile fibres, small leaves and twigs, loose chippings, coarse sand, small gravel particles



Flammability in accordance with European standard Bfl-s1. (Tested by the Textiles & Flooring Institute GmbH).

Colours



Rubber honeycomb mat: black



emco STRUCTURA without double ring round brushes

Model Structura 220 FR

| | |
|----------------------------------|---|
| Approx. height (mm) | 22 |
| Weight (kg/m²) | 13,5 |
| Tread surface | Octagonal honeycomb pattern. Dimensional tolerance +/- 1.5% |
| Flammability | Fire behaviour in accordance with European standard Bfl-s1. Tested by the Textiles & Flooring Institute GmbH. |
| Material | High-quality solid rubber, weather-proof and abrasion-proof |
| Water drainage | Dimples on the underside combined with open honeycomb bases ensure excellent water drainage |
| Custom mats | Bespoke cuts enable practically any dimensions to be accommodated. (Mat sizes up to approx. 2 m ² are manufactured with the parts bonded together; larger mat systems are supplied in several parts - with solid rubber connection elements) |

| | |
|-------------------------|-------------|
| Panel size in mm | 1500 x 1000 |
|-------------------------|-------------|

| |
|--|
| Accessories |
| emco installation frame 500: 500-25 AL Aluminium |
| emco installation frame 500: 500-25 CN Chrome-nickel steel (V2A) |
| emco installation frame 500: 500/N 600x400 Aluminium |
| emco installation frame 500: 500/N 800x500 Aluminium |
| emco installation frame 500: 500/N 900x600 Aluminium |
| emco installation frame 500: 500/N 1000x600 Aluminium |
| emco installation frame 500: 500/N 1000x800 Aluminium |
| emco installation frame 500: 500/N 1000x1000 Aluminium |
| emco installation frame 500: 500/N 1200x800 Aluminium |

Subject to technical modifications

emco Bautechnik GmbH · Breslauer Straße 34 - 38 · D-49808 Lingen (Ems)
· Germany · Phone: +49 (0) 591/9140-500 · Fax: +49 (0) 591/9140-852 · Email:
bau@emco.de · www.emco-bau.com

