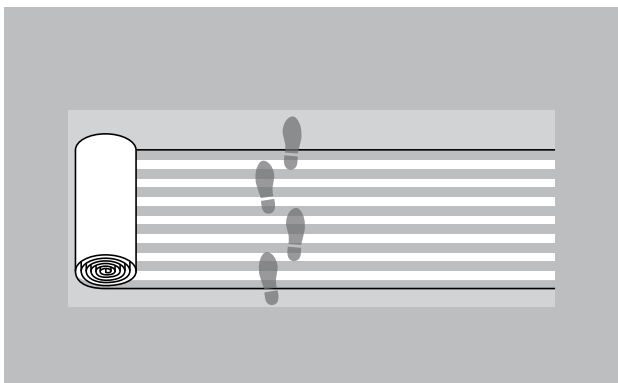


# Model SCRATCH2



Profiled and effective



Indoor areas (zone 3)

### Description

emco SCRATCH2 fulfils a dual function by means of a new type of material combination: Coarse dirt is brushed off and moisture is absorbed in the best possible way. Up to 90% less dirt is carried into the interior. This ensures that the value of your carpet, parquet flooring or stone floor is effectively retained. An investment that pays for itself: emco SCRATCH2 saves up to 65% of cleaning costs. In order to benefit from the maximum clean-off effect, emco SCRATCH2 should be laid with the rows running at right angles to the direction in which people will walk across it.



Anti-static



DS (EN 13893)



Resistant  
strength



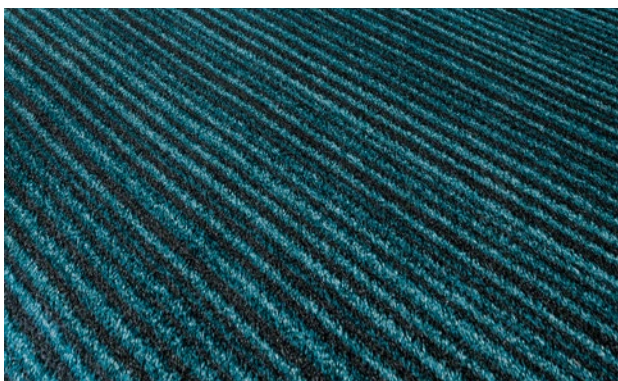
Bfl-s1



High



class 33 (heavy  
commercial  
use)



# Model SCRATCH2

<b>Construction</b>	Tufting-Velours 1/8"
<b>Pile above substrate</b>	100% polyamide ECONYL
<b>Substrate material</b>	Polyester fleece
<b>Backing material</b>	Heavy coating
<b>Pile weight / fibre weight</b>	750
<b>Total weight (g/m<sup>2</sup>)</b>	3.550
<b>Overall height (mm)</b>	8
<b>Tuft density/m<sup>2</sup></b>	116.000
<b>Slip resistance</b>	DS (EN 13893)
<b>Certificates</b>	CE conformity EN 14041 (rolls only)
<b>Supplied as rolls</b>	200 cm wide (incl. border)

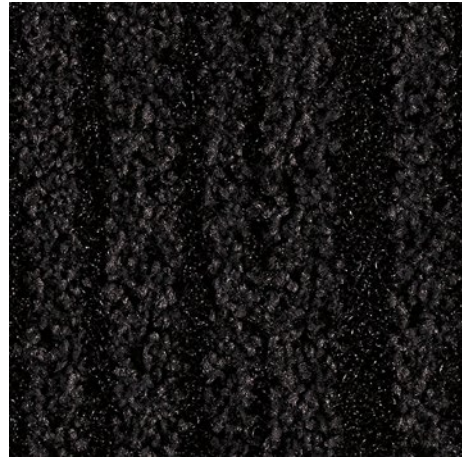
<b>Product characteristics</b>	Soiling and moisture absorption
<b>Laying</b>	Individual rolls or smaller coverings can be laid loose on any smooth floor. For larger areas, and allowing for on-site conditions, we recommend fixed laying with an adhesive suitable for plasticised PVC.
<b>Cleaning</b>	Dirt removal with powerful brush vacuum cleaner. The spray extraction process is recommended for periodic basic cleaning. Cleaning with plenty of water is absolutely no problem, water temperature should not be above 40°C. Do not use chlorinated hydrocarbon (Tetra).
<b>Brand</b>	emco

## Model SCRATCH2

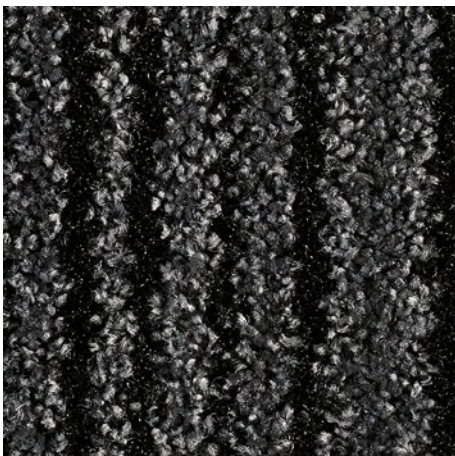
### Colours



40.11 black



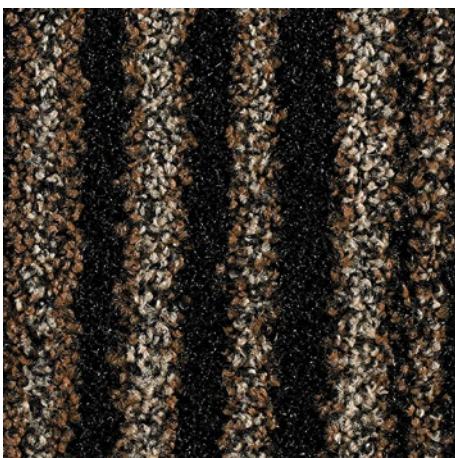
40.12 anthracite



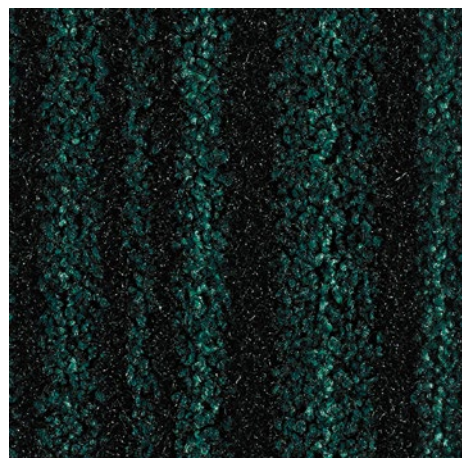
40.13 grey



40.14 brown



40.15 beige



40.16 petrol

Subject to technical modifications

emco Bautechnik GmbH · Memeler Straße 30 · D-42781 Haan · Germany · Tel.:  
+49 (0)21 29/34 75 80 · Telefax: +49 (0)21 29/34 75 810 · E-Mail: sauberlauf@  
emco.de · [www.emco-bau.com](http://www.emco-bau.com)