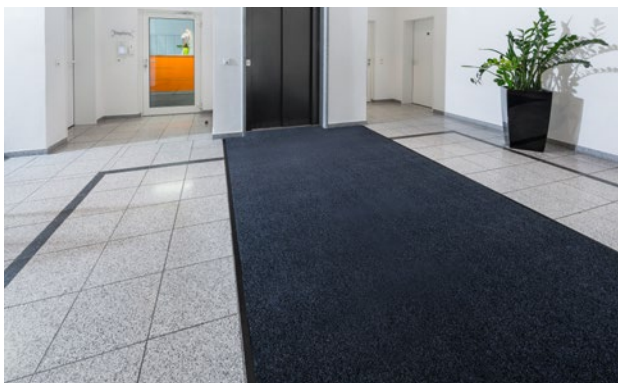


# Model PRESTIGE



A high-quality product supplied on the roll in five timeless colours for all critical zones that are highly susceptible to contamination. For all areas with high entry and exit traffic, where the distribution of dirt is to be prevented.

1 2 **3** Indoor areas (zone 3)

### Description

A high-quality product sold in roll format, in five timeless colours, for all critical areas that are prone to soiling.



Anti-static



Castor-resistant



Suitable for stairs



DS (EN 13893)



Resistant strength



Cfl-s1



ECONYL



Luxurious



Property suitable inlay 32

# Model PRESTIGE

<b>Construction</b>	Tufting-Velours 1/8"
<b>Pile above substrate</b>	100% polyamide ECONYL
<b>Substrate material</b>	Polyester fleece
<b>Backing material</b>	Heavy coating
<b>Pile weight / fibre weight</b>	975
<b>Total weight (g/m<sup>2</sup>)</b>	3.560
<b>Overall height (mm)</b>	8
<b>Tuft density/m<sup>2</sup></b>	141.730
<b>Slip resistance</b>	DS (EN 13893)
<b>Certificates</b>	CE conformity EN 14041 (rolls only)
<b>Supplied as rolls</b>	130 cm wide (incl. border) 200 cm wide (incl. border)
<b>Product characteristics</b>	Soiling and moisture absorption
<b>Laying</b>	Individual rolls or smaller coverings can be laid loose on any smooth floor. For larger areas, and allowing for on-site conditions, we recommend fixed laying with an adhesive suitable for plasticised PVC.

<b>Cleaning</b>	Dirt removal with powerful brush vacuum cleaner. The spray extraction process is recommended for periodic basic cleaning. Cleaning with plenty of water is absolutely no problem, water temperature should not be above 40°C. Do not use chlorinated hydrocarbon (Tetra).
<b>Brand</b>	emco

<b>Suitable for:</b>
Retirement homes and Care-/Nursery Homes
Arena
medical practice
Train station
Offices and administrative buildings
Family home
University / Higher education institution
airport
Hotel
Kindergarten/Nursery
Clinic/Hospital
Apartment building
Trade fair
School
Sports hall



# Model PRESTIGE

### Colours



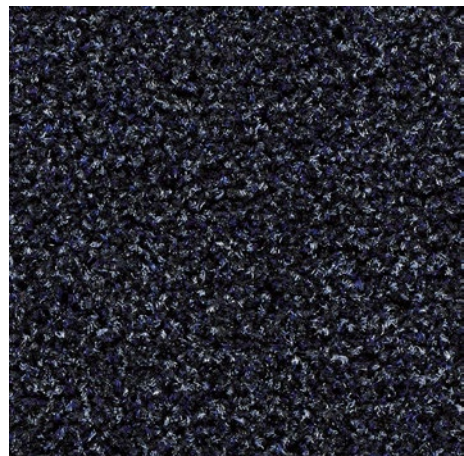
61.01 anthracite



61.02 grey



61.03 brown



61.05 blue



61.06 beige

Subject to technical modifications

emco Bautechnik GmbH · Breslauer Straße 34 - 38 · D-49808 Lingen (Ems)  
· Germany · Phone: +49 (0) 591/9140-500 · Fax: +49 (0) 591/9140-852 · Email:  
bau@emco.de · [www.emco-bau.com](http://www.emco-bau.com)

