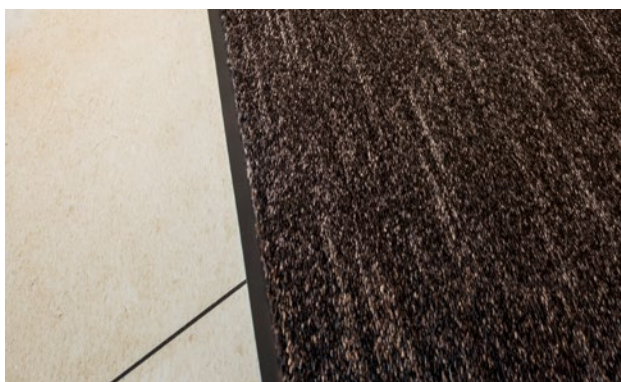


Model LINEA



Unique appearance due to striped loop construction



Indoor areas (zone 3)

Description

A clean-off with carpet-like characteristics and elegant colourways. The combination of an impressive spatial effect and excellent robustness also makes this ideal for areas with high levels of traffic.



Anti-static



DS (EN 13893)



Resistant
strength



Bfl-s1

ECONYL



good



Property sui-
table inlay 32

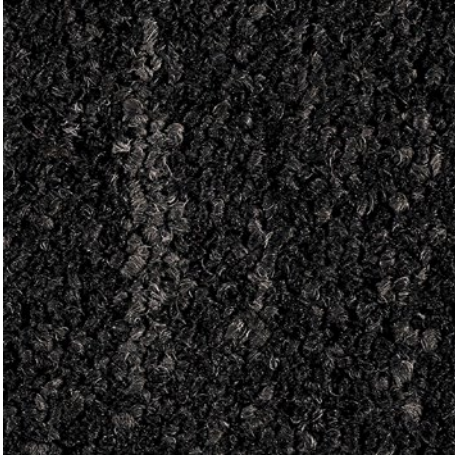
Model LINEA

Construction	Tufting velour 5/32"
Pile above substrate	100% polyamide ECONYL
Substrate material	Polyester fleece
Backing material	Heavy coating
Pile weight / fibre weight	700
Total weight (g/m²)	3.500
Overall height (mm)	8
Tuft density/m²	92.000
Slip resistance	DS (EN 13893)
Certificates	CE conformity EN 14041 (rolls only)
Supplied as rolls	200 cm wide (incl. border)

Product characteristics	Soiling and moisture absorption
Laying	Individual rolls or smaller coverings can be laid loose on any smooth floor. For larger areas, and allowing for on-site conditions, we recommend fixed laying with an adhesive suitable for plasticised PVC.
Cleaning	Dirt removal with powerful brush vacuum cleaner. The spray extraction process is recommended for periodic basic cleaning. Cleaning with plenty of water is absolutely no problem, water temperature should not be above 40°C. Do not use chlorinated hydrocarbon (Tetra).
Brand	emco

Model LINEA

Colours



19.01 anthracite



19.02 grey



19.03 brown



19.04 blue

Subject to technical modifications

emco Bautechnik GmbH · Breslauer Straße 34 - 38 · D-49808 Lingen (Ems)
· Germany · Phone: +49 (0) 591/9140-500 · Fax: +49 (0) 591/9140-852 · Email:
bau@emco.de · www.emco-bau.com

