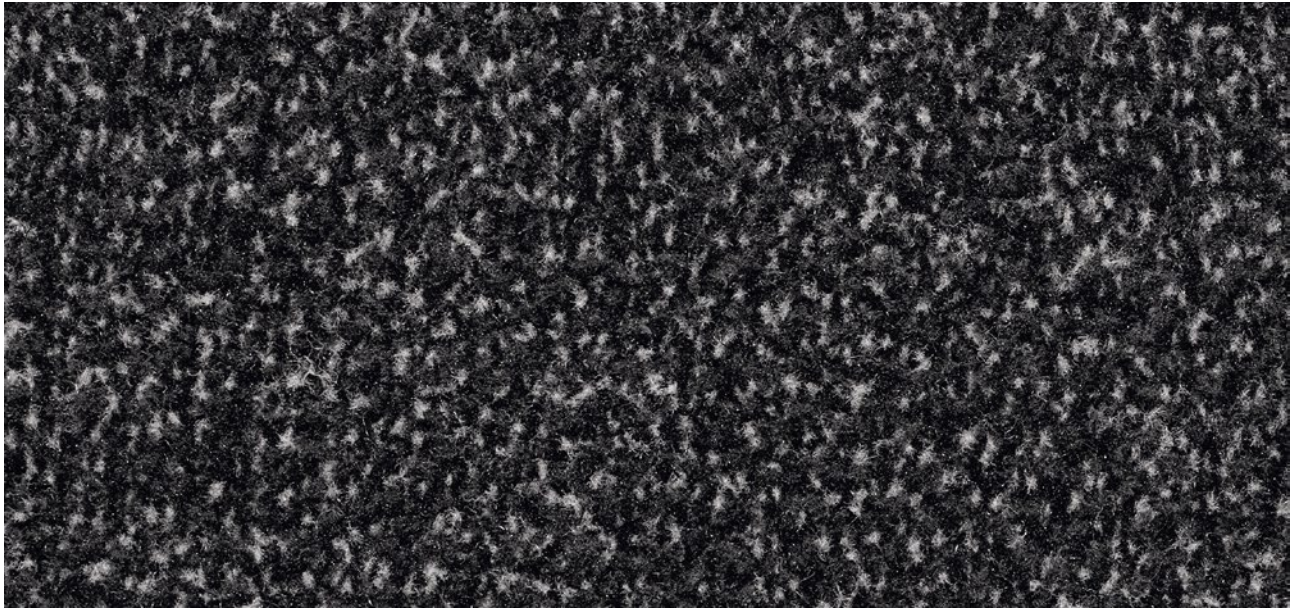


# Model INNOVA TILES



emco INNOVA clean-off tiles are available in five colours, so you can give your creativity full rein when laying them.

1 2 3 Indoor areas (zone 3)

### Description

An innovative, high-quality clean-off solution that can be adapted perfectly to suit all requirements relating to design and technology, and consistently reduces dirt. It not only looks great, but also improves features such as room acoustics.



Anti-static



Castor-resistant



Suitable for stairs



DS (EN 13893)



Resistant strength



Bfl-s1



High



Property suitable inlay 33

# Model INNOVA TILES

<b>Construction</b>	Tufting velour 5/32"
<b>Pile above substrate</b>	100% polyamide
<b>Substrate material</b>	Polyester fleece
<b>Backing material</b>	Bitumen
<b>Pile weight / fibre weight</b>	850
<b>Total weight (g/m<sup>2</sup>)</b>	3.930
<b>Overall height (mm)</b>	8
<b>Tuft density/m<sup>2</sup></b>	75.590
<b>Slip resistance</b>	DS (EN 13893)
<b>Certificates</b>	CE conformity EN 14041 (rolls only)
<b>Supplied as tiles</b>	approx. 50 x 50 cm without a border (with asphalt coating)
<b>Product characteristics</b>	Soiling and moisture absorption

<b>Laying</b>	Clean-off tiles must be removed from their packaging and allowed to stand for 24 hours to acclimatise. Our clean-off tiles are suitable for laying without bonding due to the heavy-duty bitumen coating. However, to prevent the tiles from shifting/slipping and the edges lifting during use, we recommend that tiles are laid on a self-levelling tackifier. Direction of fibres: the arrow on the reverse of each tile indicates the direction they are to be laid in. Check before laying whether the tiles are to be laid in the same direction or in a chessboard pattern. Underfloor heating: clean-off tiles provide excellent heat insulation and therefore reduce the performance of underfloor heating. We do not recommend laying our tiles on underfloor heating systems.
<b>Cleaning</b>	Dirt removal with powerful brush vacuum cleaner. The spray extraction process is recommended for periodic basic cleaning. Cleaning with plenty of water is absolutely no problem, water temperature should not be above 40°C. Do not use chlorinated hydrocarbon (Tetra).
<b>Brand</b>	emco

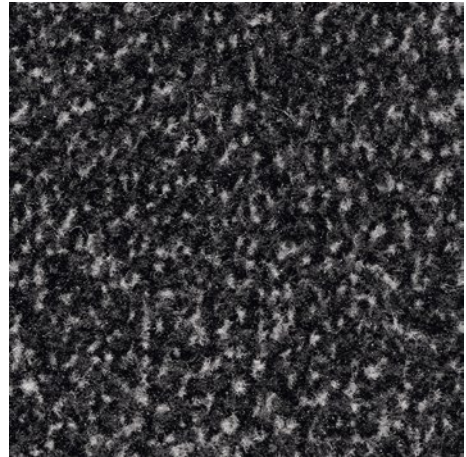


## Model INNOVA TILES

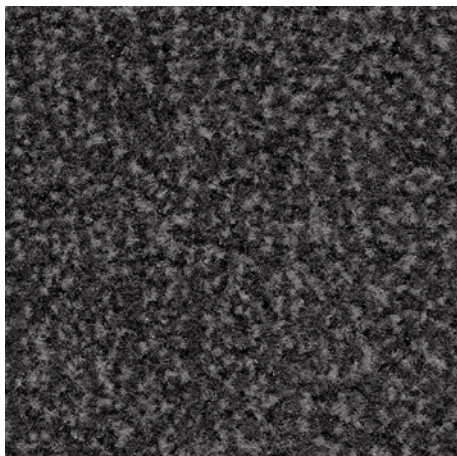
### Colours



36.01 black



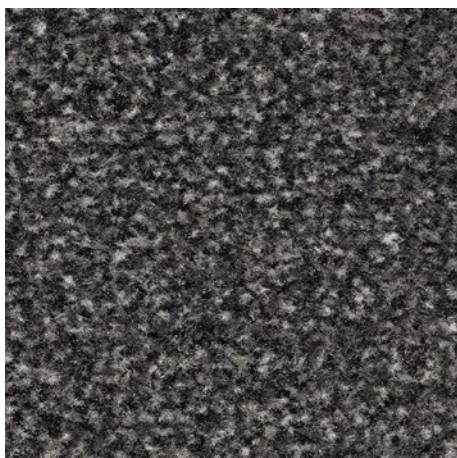
36.02 anthracite



36.03 grey



36.08 mocha



36.10 slate

Subject to technical modifications

emco Bautechnik GmbH · Breslauer Straße 34 - 38 · D-49808 Lingen (Ems)  
· Germany · Phone: +49 (0) 591/9140-500 · Fax: +49 (0) 591/9140-852 · Email:  
bau@emco.de · www.emco-bau.com

**emco**