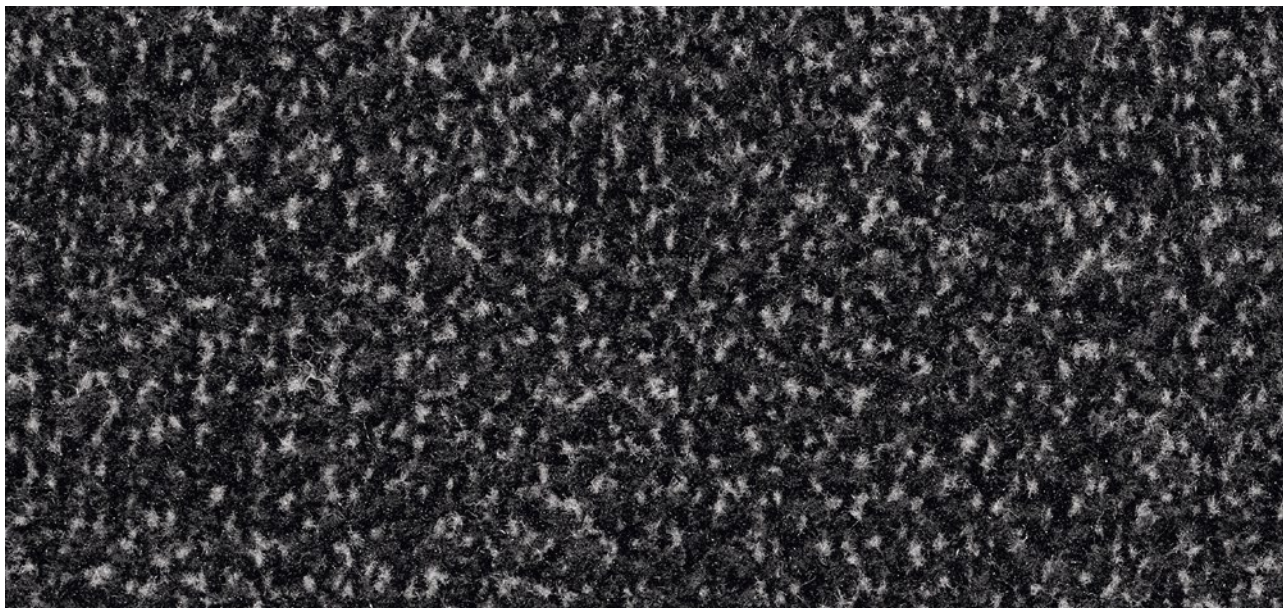


Model INNOVA TILES



emco INNOVA clean-off tiles are available in five colours, so you can give your creativity full rein when laying them.

1 2 3 Indoor areas (zone 3)

Description

An innovative, high-quality clean-off solution that can be adapted perfectly to suit all requirements relating to design and technology, and consistently reduces dirt. It not only looks great, but also improves features such as room acoustics.



Anti-static



Castor-resistant



Suitable for stairs



DS (EN 13893)



Resistant strength



Bfl-s1



High



class 33 (heavy commercial use)

Model INNOVA TILES

Construction	Tufting velour 5/32"
Pile above substrate	100% polyamide
Substrate material	Polyester fleece
Backing material	Bitumen
Pile weight / fibre weight	850
Total weight (g/m²)	3.430
Overall height (mm)	8
Tuft density/m²	75.590
Slip resistance	DS (EN 13893)
Certificates	CE conformity EN 14041 (rolls only)
Supplied as tiles	approx. 50 x 50 cm without a border (with asphalt coating)
Product characteristics	Soiling and moisture absorption

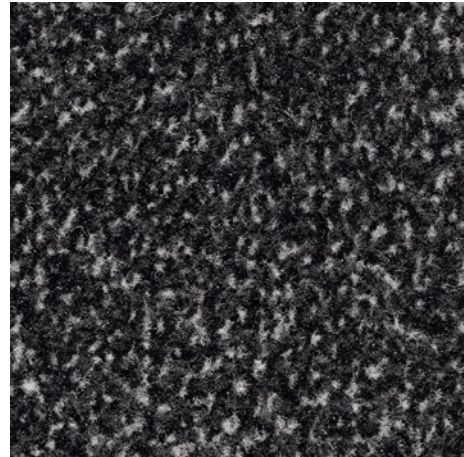
Laying	Clean-off tiles must be removed from their packaging and allowed to stand for 24 hours to acclimatise. Our clean-off tiles are suitable for laying without bonding due to the heavy-duty bitumen coating. However, to prevent the tiles from shifting/slipping and the edges lifting during use, we recommend that tiles are laid on a self-levelling tackifier. Direction of fibres: the arrow on the reverse of each tile indicates the direction they are to be laid in. Check before laying whether the tiles are to be laid in the same direction or in a chessboard pattern. Underfloor heating: clean-off tiles provide excellent heat insulation and therefore reduce the performance of underfloor heating. We do not recommend laying our tiles on underfloor heating systems.
Cleaning	Dirt removal with powerful brush vacuum cleaner. The spray extraction process is recommended for periodic basic cleaning. Cleaning with plenty of water is absolutely no problem, water temperature should not be above 40°C. Do not use chlorinated hydrocarbon (Tetra).
Brand	emco

Model INNOVA TILES

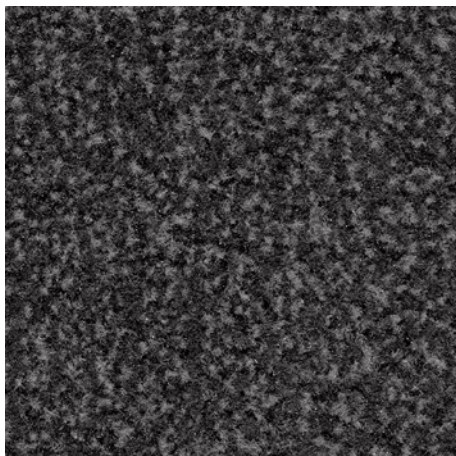
Colours



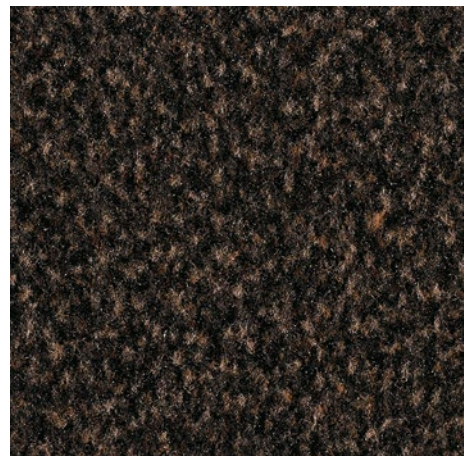
36.01 black



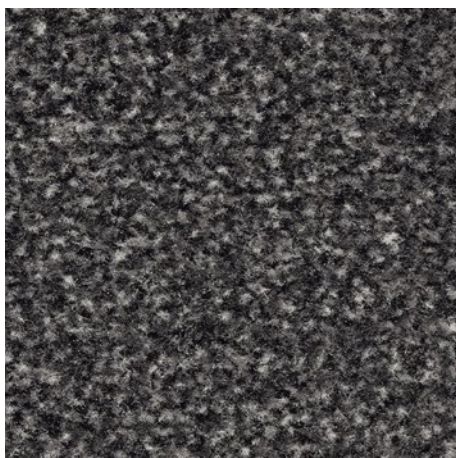
36.02 anthracite



36.03 grey



36.08 mocha



36.10 slate

Subject to technical modifications

emco Bautechnik GmbH · Breslauer Straße 34 - 38 · D-49808 Lingen (Ems)
· Germany · Phone: +49 (0) 591/9140-500 · Fax: +49 (0) 591/9140-852 · Email:
bau@emco.de · www.emco-bau.com

emco