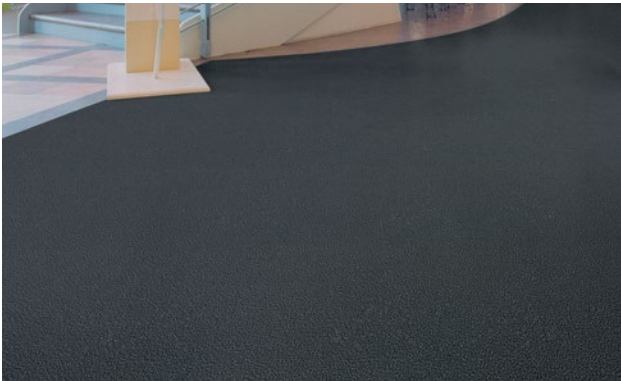
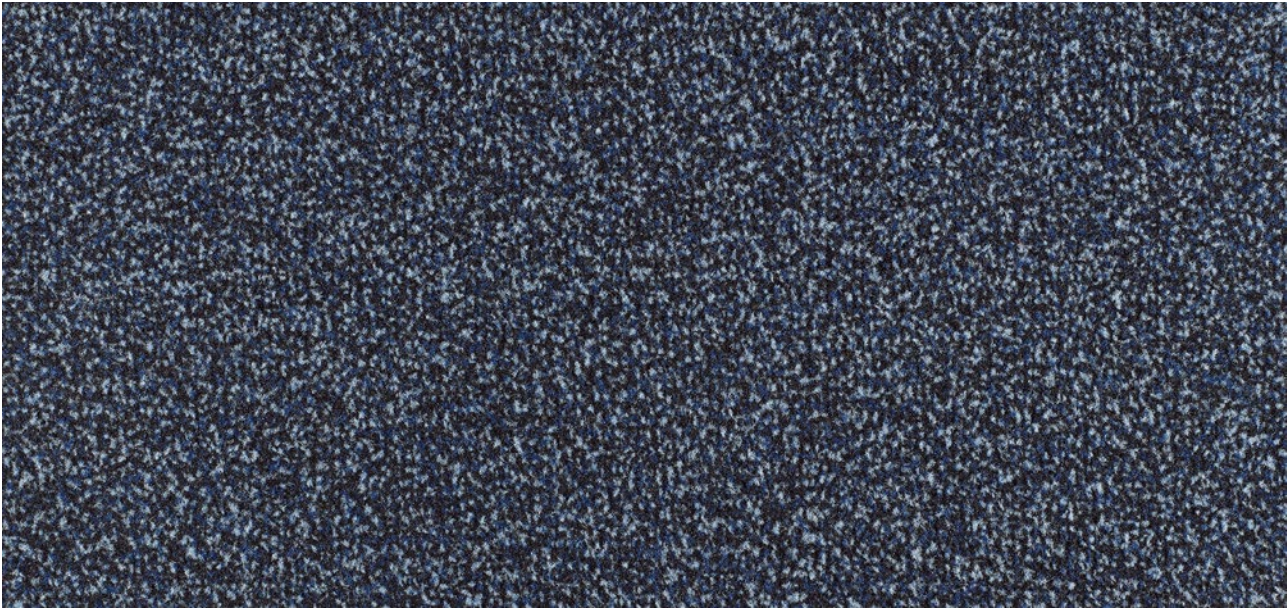


Model FAVORIT



An excellent preventive measure

1 2 **3** Indoor areas (zone 3)

Description

emco FAVORIT has proven to be as hard-wearing and functional in many entrances and other usage locations in the residential and office areas as you can expect from a product for preventive cleaning. The discreet patterns and colours are retained in spite of continuous use.



Anti-static Castor-resistant Suitable for stairs DS (EN 13893) Resistant strength



Cfl-s1 High Property suitable inlay 33

Model FAVORIT

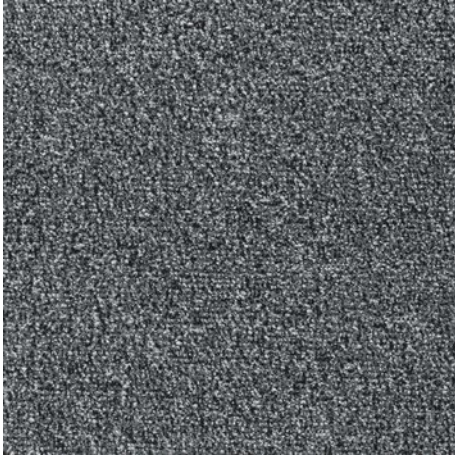
Construction	Tufting velour 5/32"
Pile above substrate	100% polyamide
Substrate material	Polyester fleece
Backing material	Heavy coating
Pile weight / fibre weight	850
Total weight (g/m²)	3.430
Overall height (mm)	7
Tuft density/m²	88.190
Slip resistance	DS (EN 13893)
Certificates	CE conformity EN 14041 (rolls only)
Supplied as rolls	90 cm wide (incl. border) 130 cm wide (incl. border) 200 cm wide (incl. border)
Supplied as mats	40 x 60 cm (incl. border) 60 x 90 cm (incl. border) 90 x 120 cm (incl. border) 90 x 150 cm (incl. border)
Product characteristics	Soiling and moisture absorption
Laying	Individual rolls or smaller coverings can be laid loose on any smooth floor. For larger areas, and allowing for on-site conditions, we recommend fixed laying with an adhesive suitable for plasticised PVC.
Cleaning	Dirt removal with powerful brush vacuum cleaner. The spray extraction process is recommended for periodic basic cleaning. Cleaning with plenty of water is absolutely no problem, water temperature should not be above 40°C. Do not use chlorinated hydrocarbon (Tetra).

Brand	emco
--------------	------

Suitable for:
Retirement homes and Care-/Nursery Homes
Arena
medical practice
Train station
DIY store
Offices and administrative buildings
Family home
Shopping centre
Retail sector
University / Higher education institution
airport
Hotel
Industry
Kindergarten/Nursery
Clinic/Hospital
Warehouse
Apartment building
Trade fair
School
Sports hall
Supermarket

Model FAVORIT

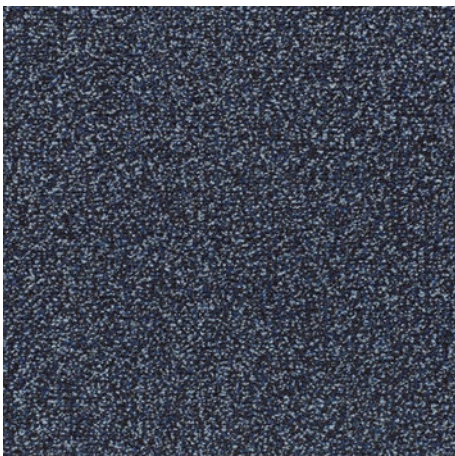
Colours



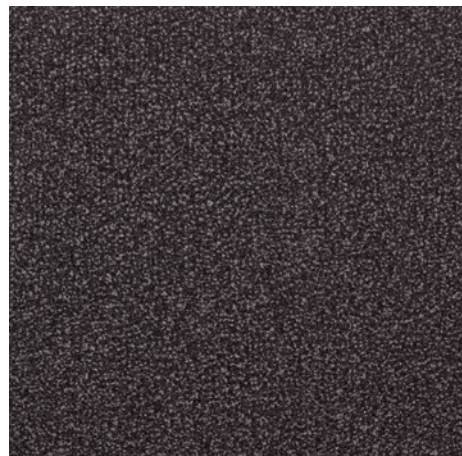
33.01 Anthracite



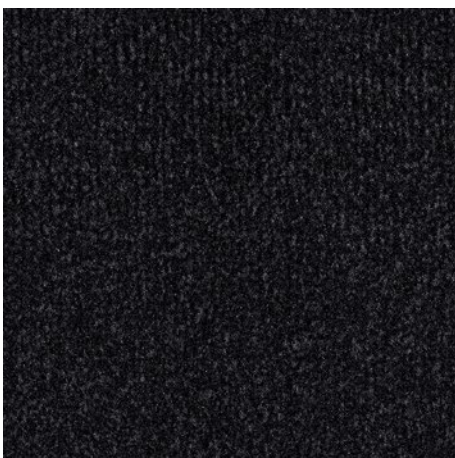
33.02 Brown



33.03 Blue



33.04 Graphite



33.10 black

Subject to technical modifications/Colours may deviate due to production processes