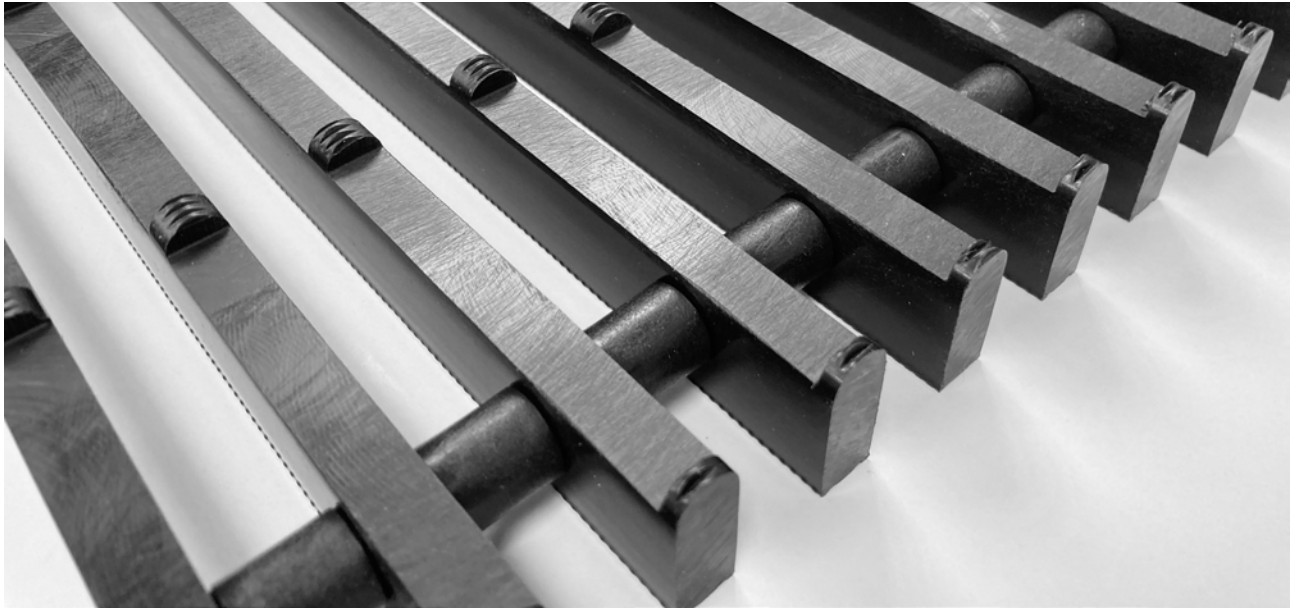


Model Design 723 Gerade 22mm



Description

Rigid swimming pool grating with grating bars running at right angles to the pool edge

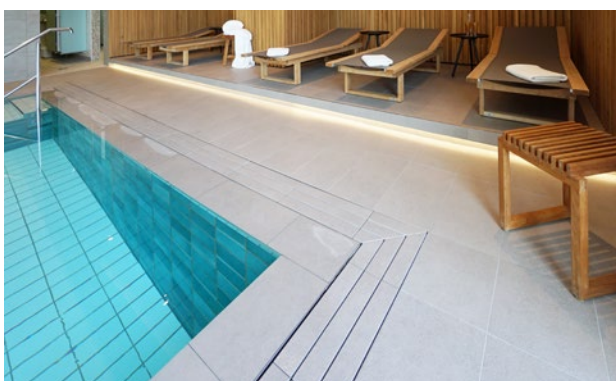
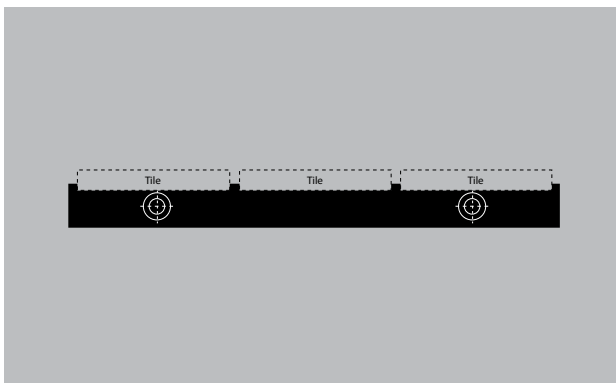
Colours



White - similar
to RAL 9010



Black similar to
RAL 9005



Model Design 723 Gerade 22mm

Profile run	Rigid swimming pool grating with grating bars running parallel to the pool edge
Material	High quality, extremely hard-wearing plastic, with UV absorber. Entirely corrosion-free and resistant to chlorine, sea water and spa water.
Support chassis	Full profile Upper profile surface incl. recesses in the grating, prepared for the application of tiles on-site (only tiles that satisfy non-slip requirements in wet, barefoot areas in accordance with DIN 51097 must be used). Cut-outs underneath for low construction heights.
Finish	Upper recesses in the plastic for gaps between tiles.
Profile spacing:	< 8 mm according to DIN EN 16582-1 and DIN EN 13451-1.
Height (mm)	22
Connection	Plastic threaded rod with interim spacers.
Usage area	Private swimming pools with overflow channels.
Dimensions	Module-/section length max. 600 mm (for radii: module-/section length = longest radian length). Height including a subsequent tile approx. 22-32 mm (depending on the tile and the height of the bar in the plastic insert). Overall heights of less than 28 mm are achieved by notching the height of the plastic insert on both sides (optional).

Properties	Aesthetically pleasing Corrosion-free
-------------------	--

Important information:

Tile requirements:

Approved for wet, barefoot areas (tested in terms of non-slip properties).
The 723 Design model is designed for a tile thickness of 8 mm. emco must be notified of other tile thicknesses before the start of production (the minimum tile thickness is 7 mm).
Manufacturer-independent tile selection available.
Tiles are to be supplied, cut, have their edges milled and be bonded by a specialist tiling company.

Bonding the tile strips:

The length of the synthetic matting can be adapted with commercially available tools before the tiles are bonded.
On-site bonding performed by a specialist tiling company in accordance with installation instructions.

General information:

Due to the minimised free cross-section, water may be transferred to the edge of the pool under certain circumstances; this does not represent a reason for complaint.
The emco 723 Design model is designed only to be walked over in line with typical use in swimming pools. The grating must not be subjected to heavy external loads, as there is a risk that it may break.
Minimum construction height of approx. 22 mm can only be achieved with a maximum tile thickness of 8 mm.
Each individual piece of the 723 DESIGN Radial is described by a constant radius.
The minimum radius is 1,000 mm (smaller radii are only possible after a positive technical check and approval by emco)
Absolutely even overflow channels are required (If the pool rim has a bevel, radial sections are not possible to make)

Service and services

Dimensioning

Subject to technical modifications

emco Bautechnik GmbH · Breslauer Straße 34 - 38 · D-49808 Lingen (Ems)
· Germany · Phone: +49 (0) 591/9140-500 · Fax: +49 (0) 591/9140-852 · Email: bau@emco.de · www.emco-bau.com

