

Mandala

STAY

emco Design

**Bespoke design solutions for
entrance mat systems**

Designing clean entrances.

emco

emco INOX®

Your personal message in the entrance

Enhance your entrance area further with stainless steel lettering in your emco entrance mat system, optionally also with a prestigious logo area to attract even more attention.

MODA ITALIA

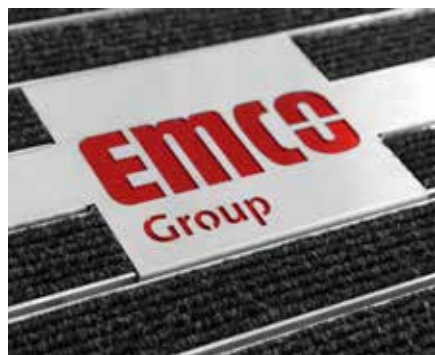
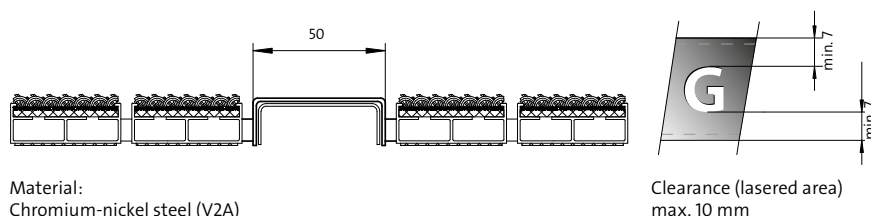


emco INOX® LINEO

The high-quality, laser-cut stainless-steel profile comes in three heights – 12, 17 and 22 mm – and is permanently integrated into the entrance mat system. It consists of two sheets of metal connected to each other – the lower sheet can be coloured.

Type	Overall height (mm)	Only for	Colours (max.)*
LINEO 12	12	DIPLOMAT ORIGINAL 512 DIPLOMAT PREMIUM 512	1-colour
LINEO 17	17	DIPLOMAT ORIGINAL 517 DIPLOMAT PREMIUM 517	1-colour
LINEO 22	22	DIPLOMAT ORIGINAL 522 DIPLOMAT PREMIUM 522	1-colour

* Choice of colour by arrangement. Standard colour is RAL 9005 Jet black.



emco INOX® QUADRO

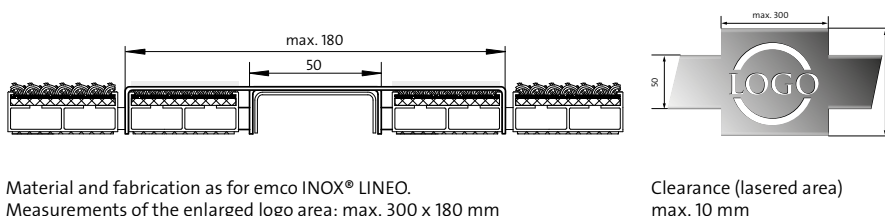
The stainless steel profile with logo area for promotional entrance mat systems can also be produced in special colours. It consists of emco INOX® LINEO with an additional logo area. The logo is available in an additional colour (special colours are also possible).

Type	Overall height (mm)	Material thickness (mm)	Only for	Colours (max)*
QUADRO 17	17	1.5	DIPLOMAT ORIGINAL 517** DIPLOMAT PREMIUM 517**	2-colour
QUADRO 22	22	1.5	DIPLOMAT ORIGINAL 522** DIPLOMAT PREMIUM 522**	2-colour

* Choice of colour by arrangement. Standard colour is RAL 9005 Jet black.

2-colour: one colour in the enlarged logo area and one colour in the text area.

**Exception: CB insert (black/grey)



emco **INOX**[®] – Font, implementation and colouring

Fonts and logos are needed as graphics (font paths) for clean implementation. For technical reasons, emco Bau adds bases for stabilisation. If no specific font is requested, the standard font ARIAL will be used.

Images in this brochure show lettering in bespoke formats.

ABCDEFGHIJKLMNOPQRSTUVWXYZ
abcdefghijklmnopqrstuvwxyz 123456789

Standard colours for emco **INOX**[®] LINEO and emco **INOX**[®] QUADRO:



RAL 1023
Traffic yellow



RAL 3020
Traffic red



RAL 7012
Basalt grey



RAL 8007
Fawn brown



RAL 6032
Signal green



RAL 9005
Jet black



RAL 5002
Ultramarine blue



You can find out more about our stainless steel profiles in the video here.

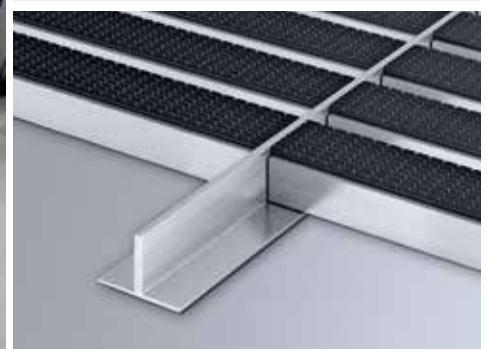
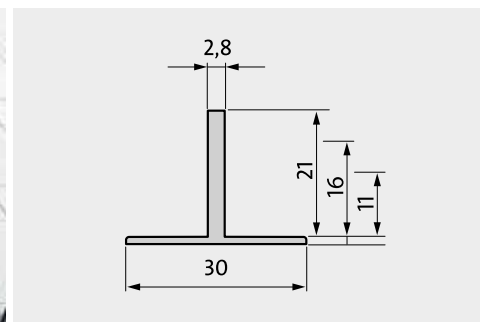


emco T-Profil

Visual mat separation and visitor guidance

No half measures in the design: the aluminium T-profile acts as a visual separator between converging mats and between zones in the entrance mat system; it can also be used to guide visitors. Existing structures, lines and joints can be incorporated so that the entrance mats can be perfectly adapted to the building's floor covering. emco T-profiles are suitable for zones 1 and 2, i.e. for indoor and outdoor use – they can withstand all kinds of weather (available for mat heights 17 and 22 mm).

The T-profile acts as a visual separator and guide – it can also be used as a design element and can link interior and exterior areas, for example.



emco **MAXIMUS IMAGE**

The insert for a consistently harmonious look

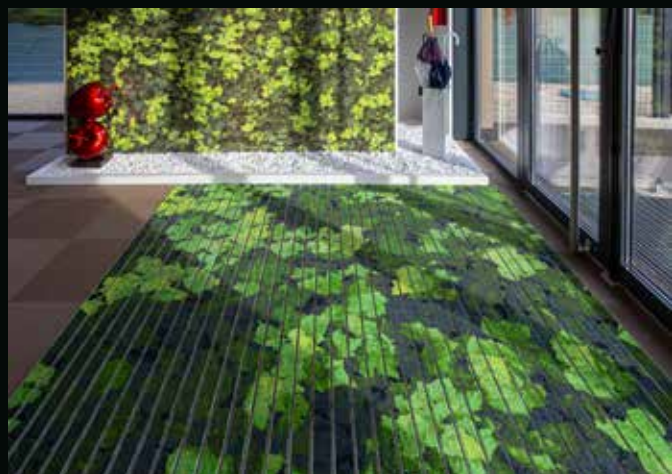
Turn your entrance mat into an interior-design element with the wow effect. Because it can be individually printed, the emco MAXIMUS IMAGE insert allows you to perfectly match your entrance mat to the décor of the room. Patterns from wallpapers, pictures or room elements can be transferred 1:1 to the mat and continued or incorporated. In this way, the architecture's signature design can be carried right through to the entrance mat. A full-surface clean-off mat can receive the same treatment, too, for an all-round harmonious room design that also satisfies the most stringent demands for resilience and looks.



emco **MAXIMUS IMAGE** as an insert:
personalised architecture right down
to the entrance mat.



emco **MAXIMUS IMAGE** as a clean-off:
harmonious room concept right down
to the individually printed clean-off.



emco **Color Edition**

Putting your entrance area centre stage

For an even more coordinated design, choose our colour anodised frames and aluminium profiles - together with the available insert colours, they can be perfectly matched to your entrance area. Choose from the elegant anodised colours EV3 gold, C33 mid-bronze, C35 black and C31 stainless steel, perfectly suited to most entrance styles.

Stage Theater im Hafen, Hamburg
Anthracite ribbed carpet insert
C35 black aluminium profile

C31 stainless steel



C35 black



EV3 gold



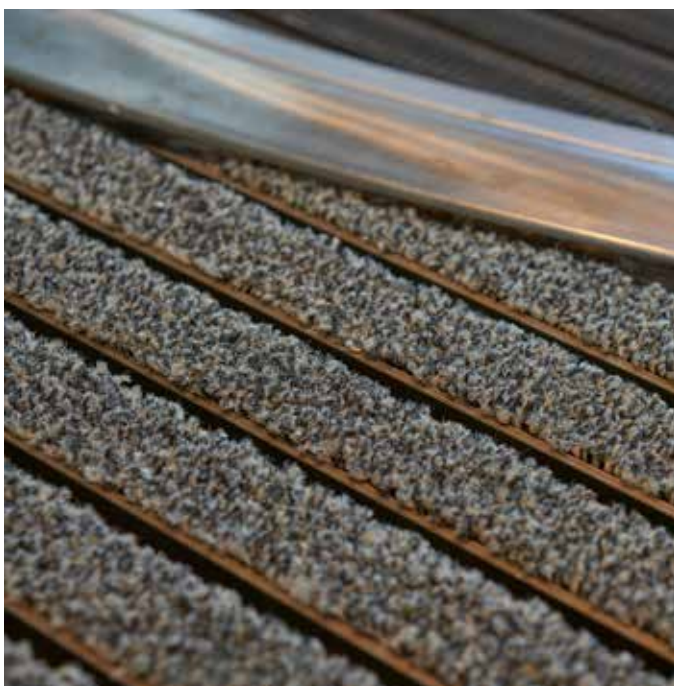
E6 C33 mid-bronze





The following products can be colour anodised:

Aluminium profiles DIPLOMAT, MARSCHALL, PLAZA, T-Profile and all Type 500 aluminium installation frames

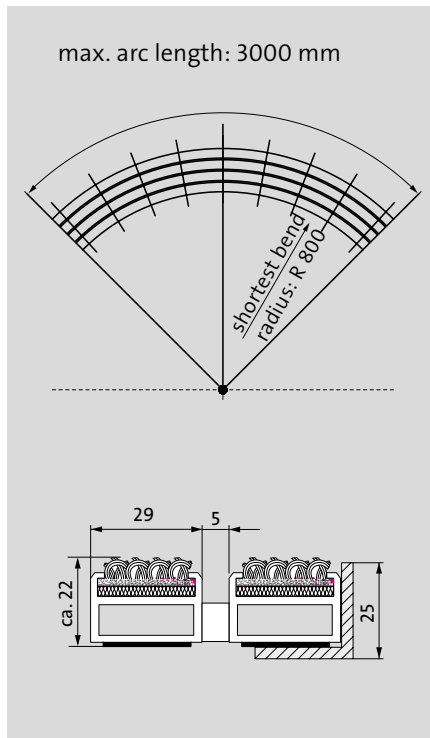




emco **RADIAL**

An all-round success: the radially curved entrance mat

This hard-wearing, radially curved entrance mat adapts perfectly to any round shape in the entrance area and sets it off beautifully. It forms a unit with the installation frame. Since the direction of traffic is always transverse to the bars, the cleaning effect is increased. The mat is produced to fit width and walking depth specifications perfectly, without the need for adjustment profiles. We can deliver any geometrical shape – so your mat can be harmoniously adapted to your specific conditions.



emco **RADIAL with ribbed insert**

emco RADIAL (approx. height 22 mm) is extremely resilient and can therefore easily withstand being rolled over and even driven over with pallet trucks and goods vehicles, wheelchairs and pushchairs. The support chassis is made of rigid aluminium with walking-sound insulation underlay; the tread surface, of inset, robust and weather-proof ribbed carpet strips.

Non-slip properties

R 11 slip resistance

DIN 51130

Colours

Standard colours: anthracite, light grey, brown, sand, red; special colours available.

Connection

threaded rod

Automatic door systems

Profile clearance of 3 mm also optionally available for automatic door systems, in accordance with DIN 18650

DIN 18650

Thanks to emco RADIAL, one-of-a-kind entrances can be designed with round mats.



Certificates



Awards



Memberships/Associations



emco Service



We know how varied project requirements can be. That's why we are happy to work with you to develop solutions for your project as well as offering many other practical services:

- telephone, online and personal project guidance
- technical measuring service
- personal contact at www.emco-bau.com
- texts for invitation to tender at www.emco-bau.com - www.ausschreiben.de

emco Bautechnik GmbH
PO box 1860
D-49803 Lingen (Ems) · GERMANY
Tel. +49 (0) 591 9140-500
Fax +49 (0) 591 9140-852
bau@emco.de

www.emco-bau.com

A member of the

