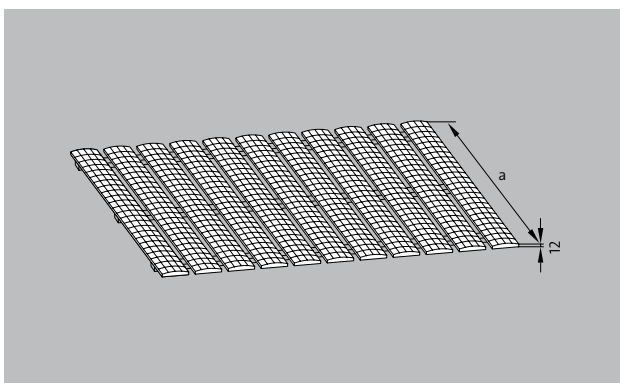
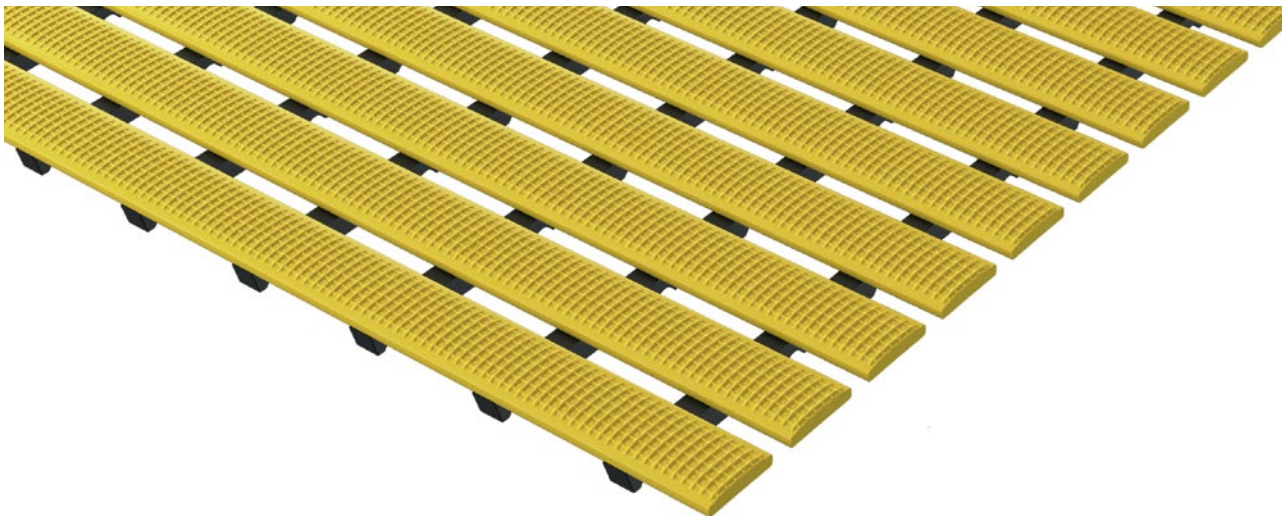


Model 600

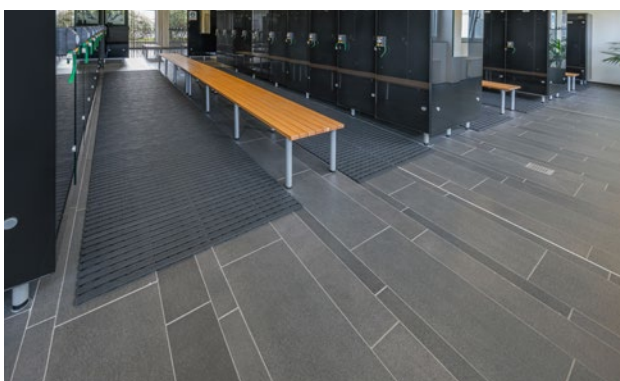


Description

Roll-up mat with water drainage on all sides and offering maximum hygiene, for laying on the floor



Non-slip properties in acc. with DIN 51097, classification C, angle of inclination $\geq 24^\circ$



Model 600

Colours



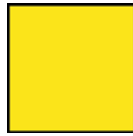
Dark blue



Cream



Brown



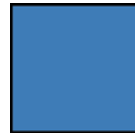
Yellow



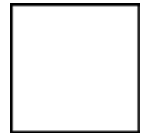
green



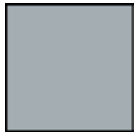
Red



blue



white



grey



black



Orange

Model 600

Material	Upper bars made from profiles, extremely hard-wearing hard PVC, lower bar made from black soft PVC, securely bonded Entirely corrosion-free and resistant to chlorine, sea water and spa water.
Height (mm)	12
Slip resistance	Non-slip in accordance with DIN 51097, classification C - tested by the „Institut der Säurefliesner-Vereinigung“ (Säurefliesner consortium)
Comment	Note: Hygiene mats are only conditionally suitable for installation underwater!
Cut	max. 2000 mm
Usage area	Indoor and outdoor pools Adventure pools and thermal baths Sports centres Schools Saunas Rehabilitation clinics and hospitals Hotels Shower facilities

Usage area	Dental and chemical laboratories Gastronomy Fitness studios Solariums
Usage area	Passageways on boats, etc.
Usage area	Swimming pools Saunas Showers (bathrooms)
Dimensions	Produced to fit width and depth perfectly without the need for alignment profiles
Properties	Aesthetically pleasing Good water drainage Completely hygienic Prevents athlete's foot Wide choice of colours
Standard width (mm)	600 800 1000

Subject to technical modifications