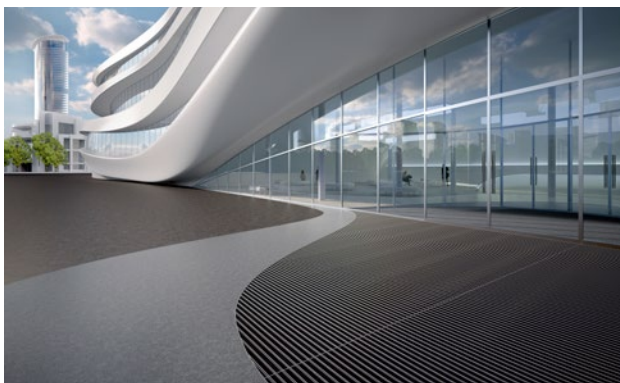
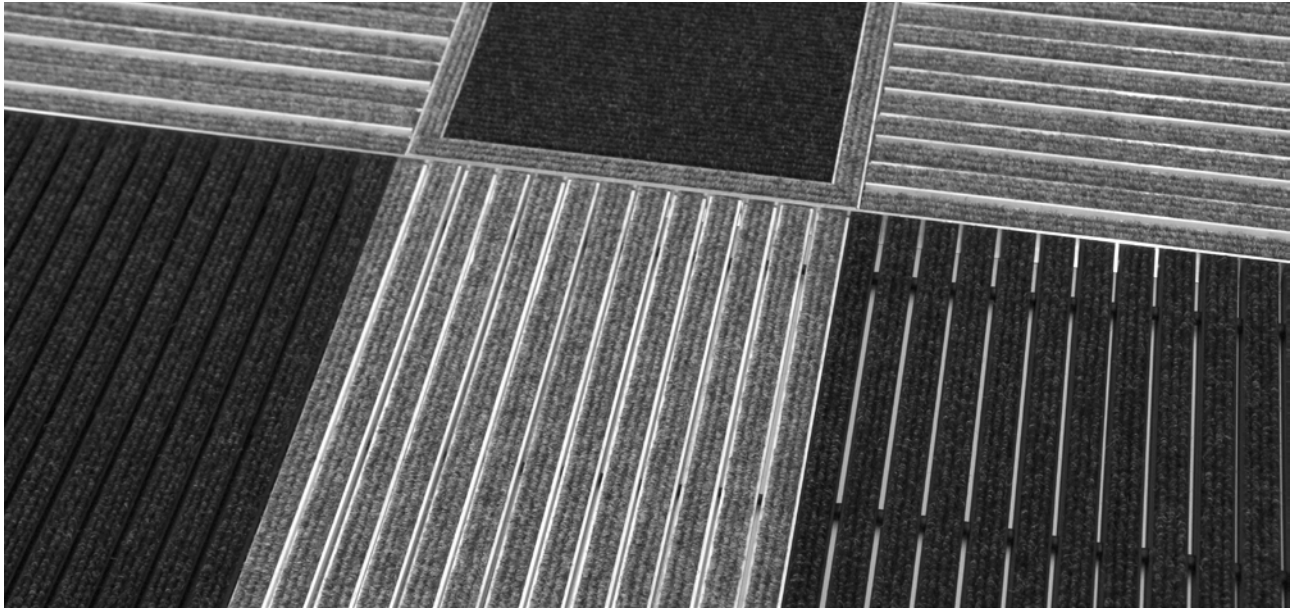


Model 522 TLS SGCB



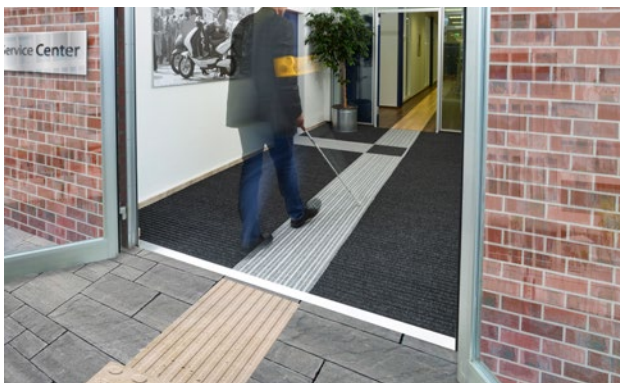
The emco entrance mat as a guidance system for the visually impaired



Outside (Zone 1)

Description

The emco guidance system for the visually impaired is tactile and comes in high-contrast colours with different profile heights and profiles that run longitudinally to the direction of traffic, enabling blind and visually impaired people to find doors, stairs, lifts etc. as well as providing orientation in larger areas. Ideal guidance with cleaning effect through the entrance to the building. The guidance system also draws attention to obstacles and possible dangers. The floor guidance system can also facilitate orientation for people with no visual impairment. Optionally available with textured ground surface indicators and painted aluminium profiles.



Outside
(Zone 1)



Street dust,
hair, sand,
ash, textile
fibres, small
leaves and
twigs, loose
chippings,
coarse sand,
small gravel
particles



The emco
entrance mat
as a guidance
system for
the visually
impaired



4 year war-
ranty

Model 522 TLS SGCB

| | |
|---|--|
| Approx. height (mm) | 22 |
| Roll-over and drive-over capability: | Prams Sack-/hand truck Wheelchairs Light shopping trolleys hand trolleys pallet trucks Electric lift truck Cars Lifting platform (i.e scissor lift) |
| Standard profile clearance approx. (mm) | 3 mm, rubber spacers |
| Connection | With threaded rod |
| Max. width/profile length for individual section (mm): | 3000 |
| available in the following widths (mm) | 166, 232, 298, 364, 430, 496, 562, 628 |
| Depth/walking depth for individual section (mm): | 3000 |
| Weight (kg/m²) | 14,4 |
| Mat division as per factory standards | From a profile length of 3000 mm or a maximum mat weight of 30 kg. For profile lengths above 2300 mm, a surcharge is applicable . Mat deviations/ splits possible at customer's request. |
| Support chassis | made of rigid aluminium with sound insulation underlay. In the area of the tactile guidance system, the profiles are laid alternately in two heights. |
| Tread surface | Recessed, robust, weather-proof profiled rubber inserts. |

Accessories

emco installation frame 500: 500-25 AL Aluminium

emco installation frame 500: 500-25 CN Chrome-nickel steel (V2A)

emco special frame with substructure: A Version A: with installation frame, rectangular tube profiles, grid support and height adjustment.

emco special frame with substructure: B Version B: with installation frame, grid support and rectangular tube profiles

emco special frame with substructure: C Type C: with installation frame and rectangular tube profiles

Suitable for:

Retirement homes and Care-/Nursery Homes

Arena

medical practice

Train station

DIY store

Offices and administrative buildings

Family home

Shopping centre

Retail sector

University / Higher education institution

airport

Hotel

Industry

Kindergarten/Nursery

Clinic/Hospital

Warehouse

Apartment building

Trade fair

School

Sports hall

Supermarket

Service and services

Construction site advice

Measured using laser measuring device on site.

Fitting and installation service

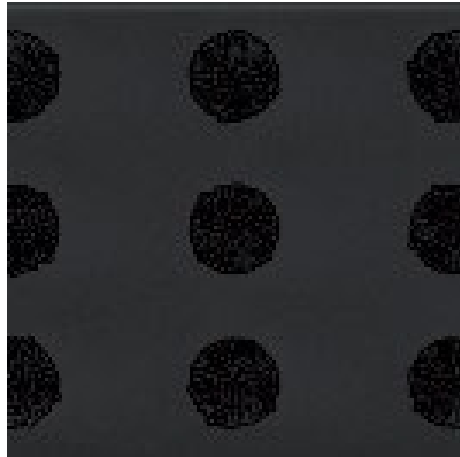
The product can be disposed of or recycled in an environmentally friendly way.

Model 522 TLS SGCB

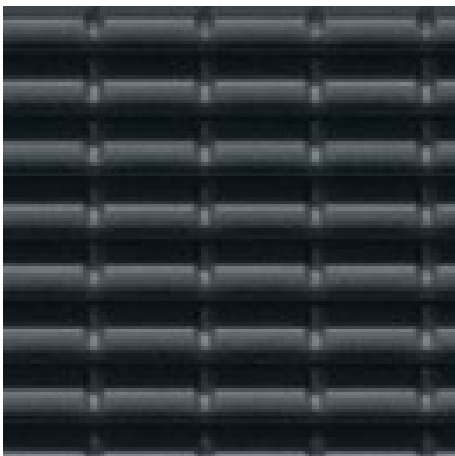
Colours



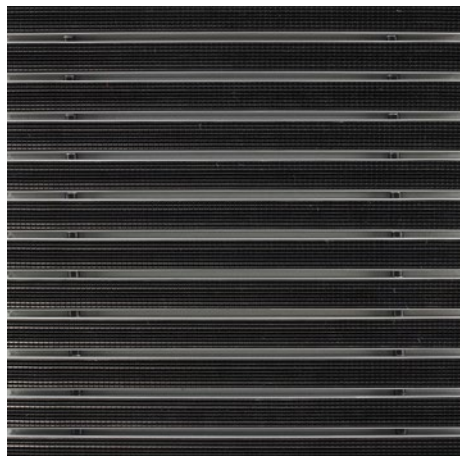
Bristle bundles in grey



Bristle bundles in black



black



Rubber

Subject to technical modifications

emco Bautechnik GmbH · Breslauer Straße 34 - 38 · D-49808 Lingen (Ems)
· Germany · Phone: +49 (0) 591/9140-500 · Fax: +49 (0) 591/9140-852 · Email:
bau@emco.de · www.emco-bau.com

