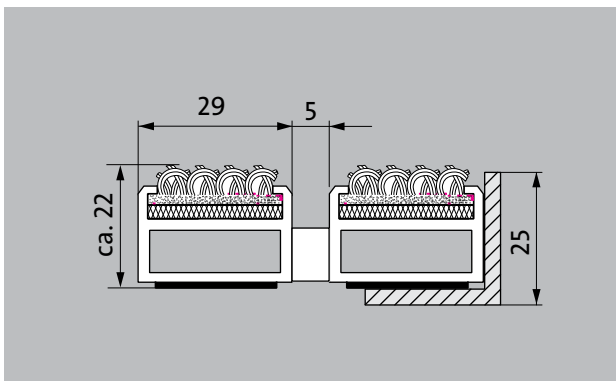
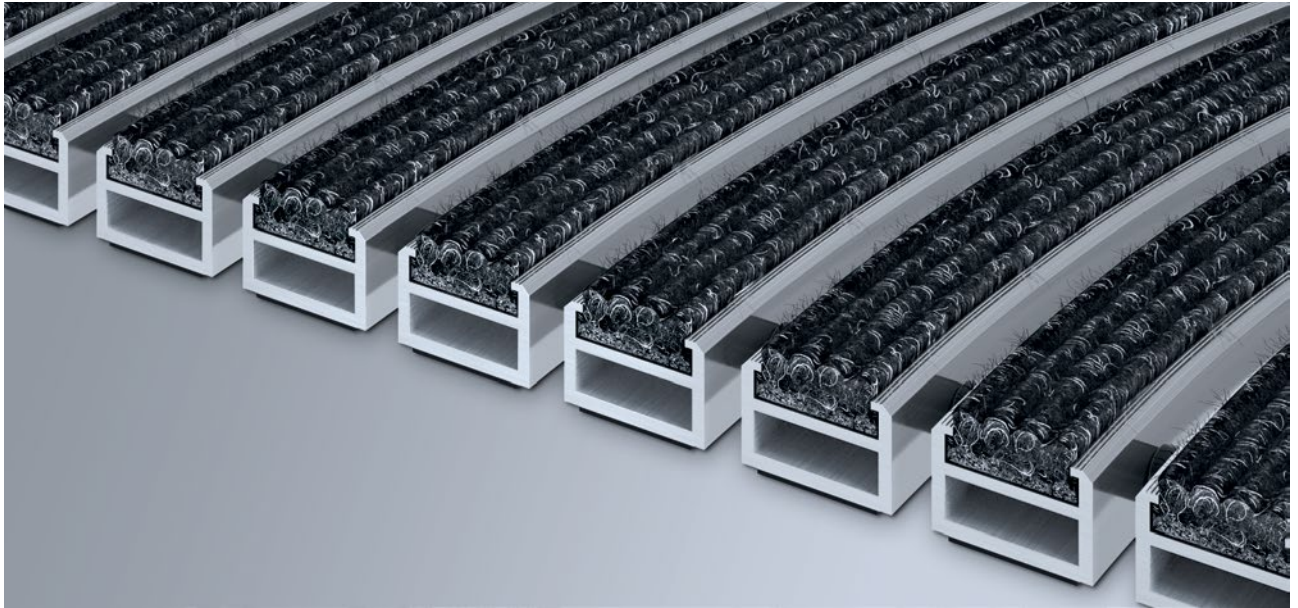


## Model 522 RDR



The extravagant one for architecturally sophisticated properties. Ideal design for all entrances with round structural shapes. Ideal for picking up fine dirt.

**1** **2** **3** Indoor and outdoor  
(covered, Zone 1+2)

### Description

Hard-wearing, radial curved entrance mat. Installation frame and entrance mat as a single unit, for laying on the floor. Can be rolled over and also driven over by fork lifts and goods vehicles. Mats produced to fit width and walking depth specifications perfectly, without the need for alignment profiles. Smallest bending radius 800 mm.



Indoor and outdoor (covered, Zone 1+2)



Street dust, hair, sand, ash, textile fibres, small leaves and twigs, etc.



Extremely durable



Flammability in accordance with European standard Cfl-s1. (Tested by the Textiles & Flooring Institute GmbH).



## Model 522 RDR

|   |  |
|---|--|
| <b>Approx. height (mm)</b>                                    | 22   |
| <b>Roll-over and drive-over capability:</b>                   | Wheelchairs<br>Prams<br>Light shopping trolleys<br>hand trolleys<br>Cars<br>pallet trucks  |
| <b>Standard profile clearance approx. (mm)</b>                | 5 mm, rubber spacers   |
| <b>Automatic door systems</b>                                 | Profile gaps, for revolving doors, available in 3mm according to DIN EN 16005  |
| <b>Connection</b>   | Threaded stainless steel rod   |
| <b>Max. width/profile length for individual section (mm):</b> | 3000   |
| <b>Profile width (mm)</b>                                     | 29   |
| <b>Weight (kg/m<sup>2</sup>)</b>                              | 16,8   |
| <b>Mat division as per factory standards</b>                  | From a profile length of 3000 mm or a maximum mat weight of 30 kg. For profile lengths above 2300 mm, a surcharge is applicable . Mat deviations/ splits possible at customer's request. |
| <b>Support chassis</b>  | Made using rigid aluminium with sound absorbing insulation on the underside  |

|  |   |
|--|---|
| <b>Tread surface</b>                                   | Recessed, robust, weather-proof, ribbed carpet strips.  |
| <b>Flammability</b>                                    | Insert for Light Grey and Anthracite ribbed carpet colours available on request (surcharge applicable) with fire classification Cfl-s1 according to EN 13501. |
| <b>Colour fastness to artificial light ISO 105-B02</b> | good 6  |
| <b>Colour fastness to rubbing ISO 105 X12</b>          | good 4  |
| <b>Colour fastness to water ISO 105 E01</b>            | good 5  |

| <b>Accessories</b>   |
|--|
| emco installation frame 500: 500-25 AL Aluminium                         |
| emco installation frame 500: 500-25 CN Chrome-nickel steel (V2A)         |
| emco T-profile: T22  |
| Mat joining brackets: MV Supplied as standard with mats in several parts |

| <b>Service and services</b>  |
|--|
| Construction site advice   |
| Measured using laser measuring device on site.                                 |
| Fitting and installation service   |
| The product can be disposed of or recycled in an environmentally friendly way. |

## **Model 522 RDR**

### **Colours**



Light grey no. 220



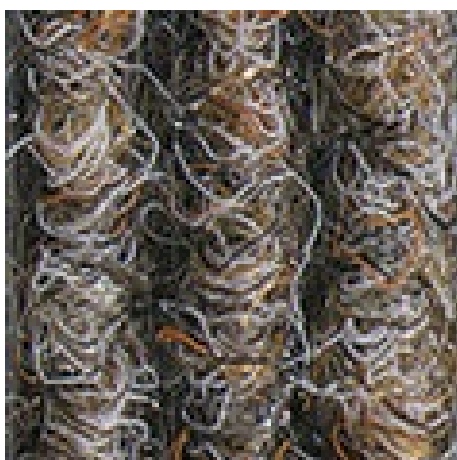
Anthracite no. 200



Red no. 305



Brown no. 485



Sand no. 430

Subject to technical modifications

emco Bautechnik GmbH · Breslauer Straße 34 - 38 · D-49808 Lingen (Ems)  
· Germany · Phone: +49 (0) 591/9140-500 · Fax: +49 (0) 591/9140-852 · Email:  
bau@emco.de · www.emco-bau.com

