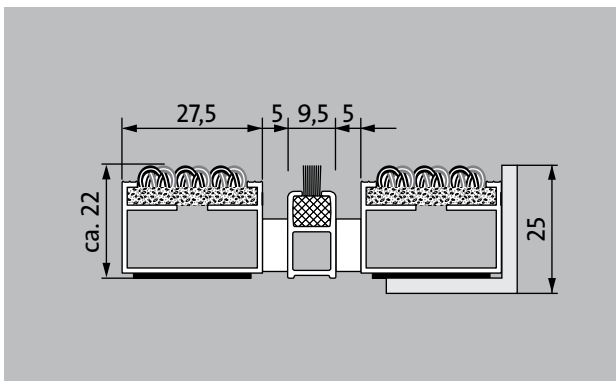
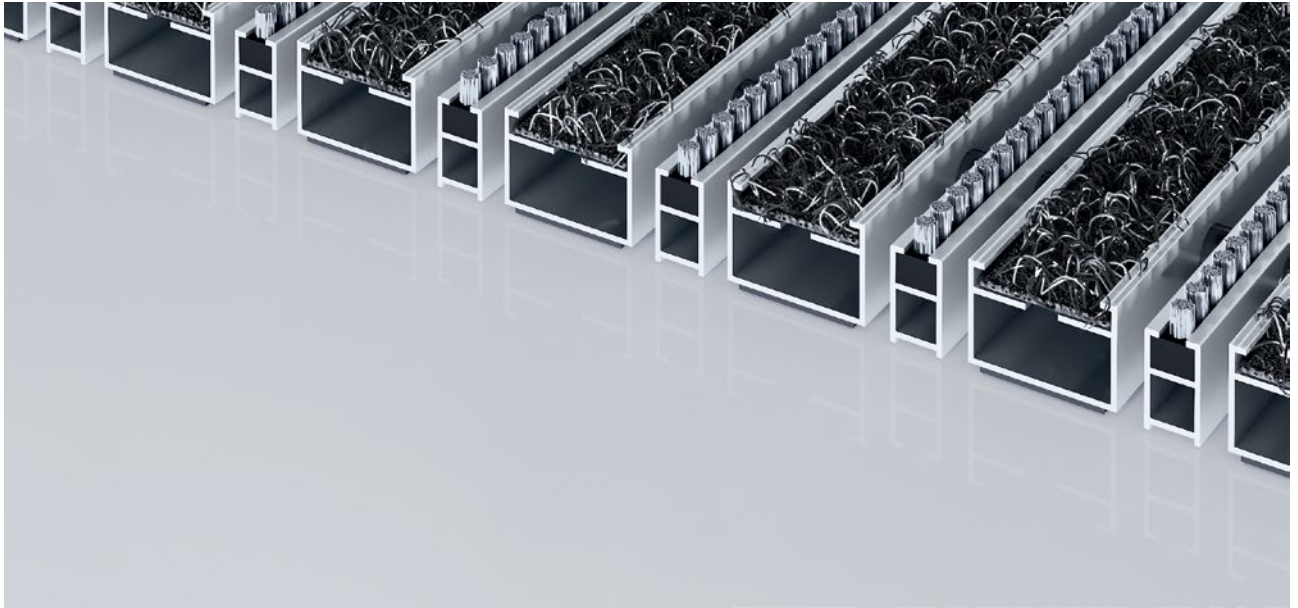


Model 522 P Outdoor B



The long-lasting Premium entrance mat with the Outdoor insert for demonstrably thorough removal of coarse dirt. The additional profile provides extra cleaning. Ideal for buildings with normal to heavy loading.



Indoor and outdoor
(covered, Zone 1+2)

Description

Rollable and hard-wearing premium entrance mat with performance insert for supported installation options. Customisable widths and walking depths available without a compensation profile. Available in any geometric shape.



Indoor and
outdoor (co-
vered, Zone
1+2)



Street dust,
hair, sand,
ash, textile
fibres, small
leaves and
twigs, loose
chippings,
coarse sand,
small gravel
particles



5 years gua-
rantee



class 33 (heavy
commercial
use)



Model 522 P Outdoor B

| | |
|---|--|
| Approx. height (mm) | 22 |
| Roll-over and drive-over capability: | Prams Sack-/hand truck Wheelchairs |
| Standard profile clearance approx. (mm) | 5 mm, rubber spacers |
| Automatic door systems | Profile clearance of 3 mm available as an option for revolving door drives, in accordance with EN 16005 |
| Connection | Plastic-coated stainless steel cable |
| Max. width/profile length for individual section (mm): | 3000 |
| Profile width (mm) | 27.5 |
| Depth/walking depth for individual section (mm): | 3000 |
| Weight (kg/m²) | 11,3 |
| Mat division as per factory standards | From a profile length of 3000 mm or a maximum mat weight of 30 kg. For profile lengths above 2300 mm, a surcharge is applicable. Mat deviations/splits possible at customer's request. |
| Support chassis | Made using rigid aluminium with Premium sound absorbing insulation on the underside |
| Support chassis colour | Aluminium as standard. Anodised colours for an additional charge: EV3 gold, C33 mid-bronze, C35 black or C31 stainless steel |
| Tread surface | The weather-resistant Outdoor insert for noticeably thorough removal of coarse dirt. The additional profile increases the cleaning power. |
| Flammability | Insert with fire classification Cfl-s1 according to EN 13501. |
| Pile material | 100% PA 6 (polyamide) |
| Use classification EN1307 | class 33 (heavy commercial use) |

Accessories

| |
|--|
| emco installation frame 500: 500-25 AL Aluminium |
| emco installation frame 500: 500-25 CN Chrome-nickel steel (V2A) |
| emco LUMINA: LUMINA Aluminium |
| emco LUMINA: LUMINA + LED Aluminium |
| emco LUMINA: LUMINA VIA Aluminium |
| emco ramp edge: A17 Aluminium |
| emco T-profile: T22 |
| emco cover strip: C22 Chrome-nickel steel (V2A) |
| emco INOX®: LINEO 22 Chrome-nickel steel (V2A) |
| emco INOX®: QUADRO 22 Chrome-nickel steel (V2A) |
| emco dirt collection well: 5522AL Aluminium |
| emco dirt collection well: 5522CN Chrome-nickel steel (V2A) |
| emco dirt collection well: 5522AL Aluminium |
| emco dirt collection well: 5522CN Chrome-nickel steel (V2A) |
| Rubber underlay 3 mm: GU 3 |
| Rubber underlay 5 mm: GU 5 |
| Rubber underlay 1 mm: GU 1 |
| Mat joining brackets: MV Supplied as standard with mats in several parts |

Suitable for:

| |
|--|
| Retirement homes and Care-/Nursery Homes |
| medical practice |
| Offices and administrative buildings |
| Family home |
| Retail sector |
| Hotel |
| Kindergarten/Nursery |
| Apartment building |
| School |
| Sports hall |

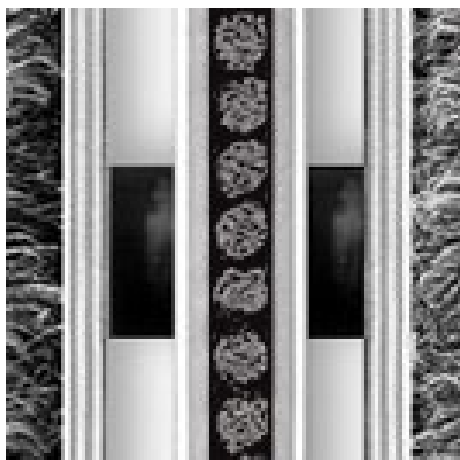
Model 522 P Outdoor B

| Service and services |
|--|
| Construction site advice |
| Dimensioning |
| Measured using laser measuring device on site. |

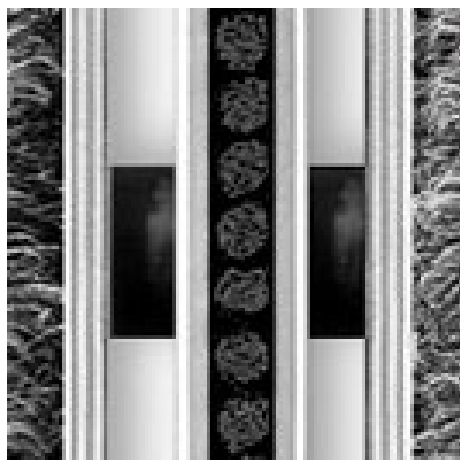
| |
|--|
| Installation service |
| Fitting and installation service |
| Repairs |
| The product can be disposed of or recycled in an environmentally friendly way. |

Model 522 P Outdoor B

Colours



grey



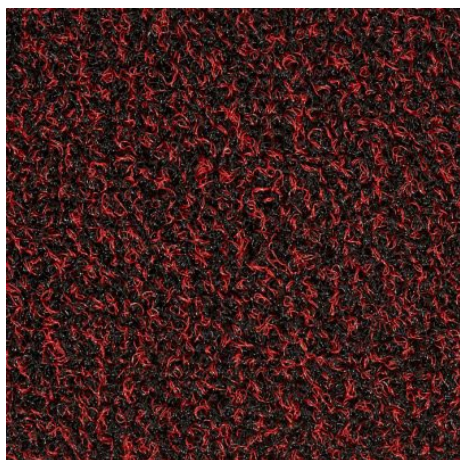
Black



Anthracite



Brown



Red

Warranty conditions are available at:
www.emco-bau.com/en/warranty-conditions/

Subject to technical modifications

emco Bautechnik GmbH · Breslauer Straße 34 - 38 · D-49808 Lingen (Ems)
· Germany · Phone: +49 (0) 591/9140-500 · Fax: +49 (0) 591/9140-852 · Email:
bau@emco.de · www.emco-bau.com

