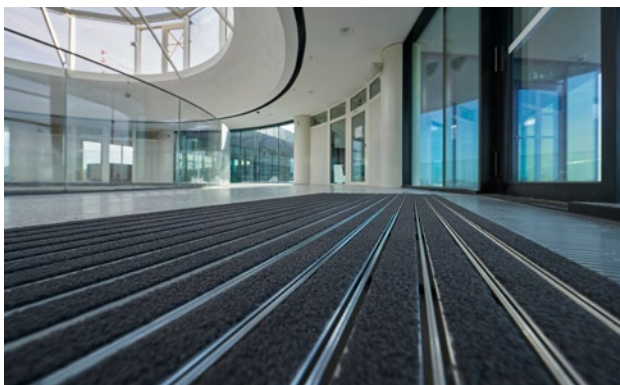
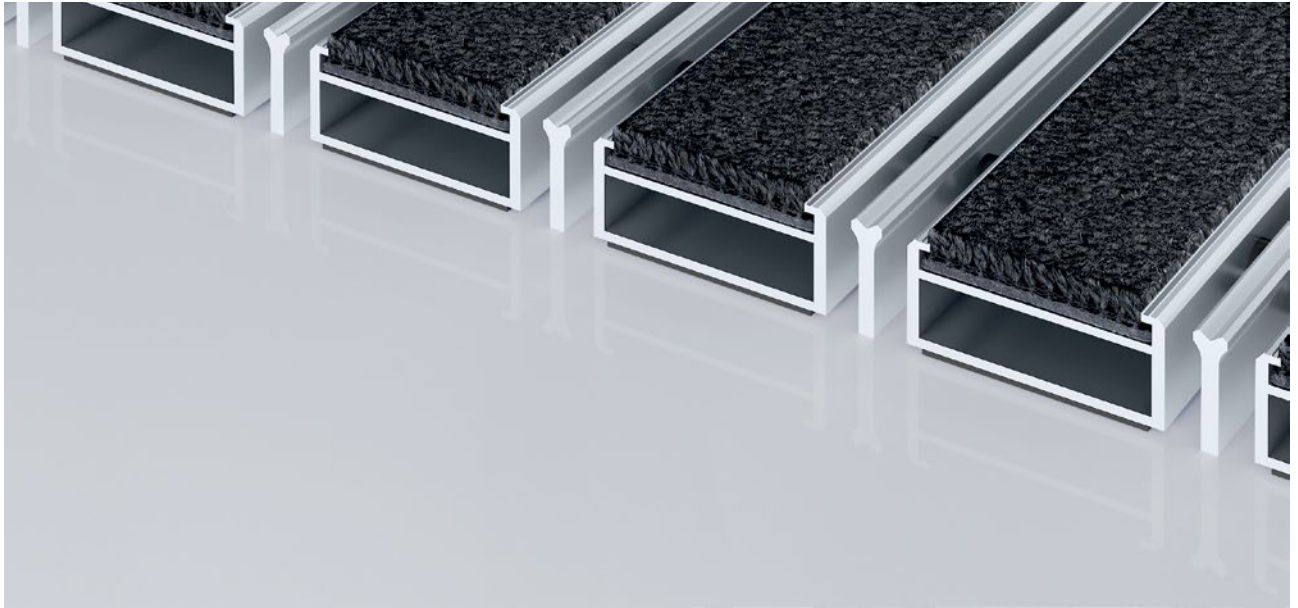


## Model 522 PSL Maximus K



The extra-wide premium entrance mat with the stylish, carpet-look Maximus insert stands out from the crowd with its premium-quality tufted velour and high-end design. Particularly ideal for collecting fine dirt. The additional profile offers even more cleaning power. Optimally designed for buildings exposed to extreme footfall.

1

2

3

Indoor and outdoor  
(covered, Zone 1+2)

### Description

Roll-up, extremely hard-wearing Premium entrance mat with extra-wide profiles and Performance insert for recess installation. Can be rolled over and even driven over. Customise the width and depth without alignment profile. Available in any geometric shape.



Indoor and outdoor (covered, Zone 1+2)



Street dust, hair, sand, ash, textile fibres, small leaves and twigs, etc.



Damp street dust, damp sand deposits, dust, etc.



5 years guarantee



Property suitable inlay 33



# emco MARSCHALL Premium Large With Maximus insert and scraping edge

## Model 522 PSL Maximus K

|   |  |
|---|--|
| <b>Approx. height (mm)</b>                                    | 22   |
| <b>Roll-over and drive-over capability:</b>                   | Prams<br>Sack-/hand truck<br>Wheelchairs   |
| <b>Standard profile clearance approx. (mm)</b>                | 5 mm, rubber spacers   |
| <b>Automatic door systems</b>                                 | Profile gaps, for revolving doors, available in 3mm according to DIN EN 16005  |
| <b>Connection</b>   | Plastic-coated stainless steel cable   |
| <b>Max. width/profile length for individual section (mm):</b> | 3000   |
| <b>Profile width (mm)</b>                                     | 46.5   |
| <b>Weight (kg/m<sup>2</sup>)</b>                              | 15,8   |
| <b>Mat division as per factory standards</b>                  | From a profile length of 3000 mm or a maximum mat weight of 30 kg. For profile lengths above 2300 mm, a surcharge is applicable. Mat deviations/splits possible at customer's request. |
| <b>Support chassis</b>  | Reinforced support chassis made using rigid aluminium with sound absorbing insulation on the underside   |
| <b>Support chassis colour</b>                                 | Standard natural anodized Anodised colours for an additional charge: EV3 gold, C33 mid-bronze, C35 black or C31 stainless steel  |
| <b>Tread surface</b>  | Embedded, robust MAXIMUS inserts in Bfl-S1 quality (clean-off floor covering made from special polyamide yarn, 100%)   |
| <b>Flammability</b>   | Insert with fire classification Bfl-s1 according to EN 13501.  |
| <b>Pile material</b>  | 100% PA 6.6 (polyamide)  |
| <b>Use classification EN1307</b>                              | Property suitable inlay 33   |

### Accessories

|  |
|--|
| emco installation frame 500: 500-25 AL Aluminium                         |
| emco installation frame 500: 500-25 CN Chrome-nickel steel (V2A)         |
| emco ramp edge: A17 Aluminium  |
| emco T-profile: T22  |
| emco cover strip: C22 Chrome-nickel steel (V2A)                          |
| emco INOX®: LINEO 22 Chrome-nickel steel (V2A)                           |
| emco INOX®: QUADRO 22 Chrome-nickel steel (V2A)                          |
| emco dirt collection well: 5522AL Aluminium                              |
| emco dirt collection well: 5522CN Chrome-nickel steel (V2A)              |
| Rubber underlay 1 mm: GU 1   |
| Rubber underlay 3 mm: GU 3   |
| Rubber underlay 5 mm: GU 5   |
| Mat joining brackets: MV Supplied as standard with mats in several parts |

### Suitable for:

|   |
|---|
| Retirement homes and Care-/Nursery Homes  |
| Arena                                     |
| medical practice                          |
| Train station                             |
| DIY store                                 |
| Offices and administrative buildings      |
| Family home                               |
| Shopping centre                           |
| Retail sector                             |
| University / Higher education institution |
| airport                                   |
| Hotel                                     |
| Industry                                  |
| Kindergarten/Nursery                      |
| Warehouse                                 |
| Apartment building                        |
| Trade fair                                |
| School                                    |
| Sports hall                               |

# emco MARSCHALL Premium Large With Maximus insert and scraping edge

---

## Model 522 PSL Maximus K

### Insert certified to TÜV PROFiCERT- product interior (Standard)

French VOC regulation

LEED v4 (outside North America)

BREEAM Exemplary Level

Belgian VOC regulation

AgBB (Committee for Health-related Evaluation of Building Products)

MVV TB Appendix 8, 9 / ABG

### Service and services

Construction site advice

Dimensioning

Measured using laser measuring device on site.

Installation service

Fitting and installation service

Repairs

The product can be disposed of or recycled in an environmentally friendly way.



## **Model 522 PSL Maximus K**

### **Colours**



Black 80.01



Black mottled 81.01



Anthracite 80.02



Brown 80.04



Red 80.07

Warranty conditions are available at:  
[www.emco-bau.com/en/warranty-conditions/](http://www.emco-bau.com/en/warranty-conditions/)

Subject to technical modifications

emco Bautechnik GmbH · Breslauer Straße 34 - 38 · D-49808 Lingen (Ems)  
· Germany · Phone: +49 (0) 591/9140-500 · Fax: +49 (0) 591/9140-852 · Email:  
[bau@emco.de](mailto:bau@emco.de) · [www.emco-bau.com](http://www.emco-bau.com)

