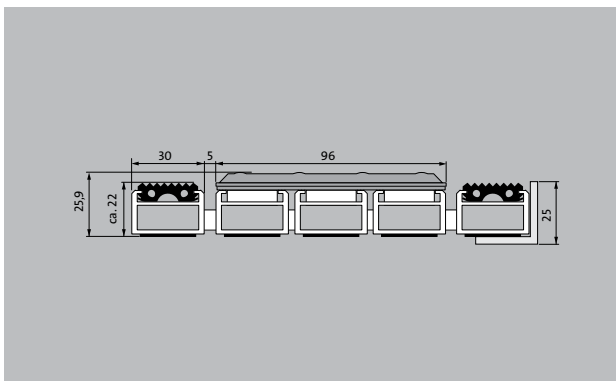


Model 22 SPIN/SG



The tactile guidance system for the very highest standards in design and functionality.



Outside (Zone 1)

Description

Roll-up, hard-wearing entrance mat for supported or self-supporting laying. Fitted with small (122 mm) or large (300 mm) stainless steel tiles for tactile guidance. Each tile occupies three aluminium profile bars. Mat is produced to fit width perfectly; depth obtained using spacing increments of 100 mm. Option of dimpled tiles for attention panel.



Outside
(Zone 1)



Street dust,
hair, sand,
ash, textile
fibres, small
leaves and
twigs, loose
chippings,
coarse sand,
small gravel
particles



The emco
entrance mat
as a guidance
system for
the visually
impaired



R 9 slip resis-
tance as per
DIN 51130



4 year war-
ranty

Model 22 SPIN/SG

| | |
|---|---|
| Roll-over and drive-over capability: | Wheelchairs Prams Light shopping trolleys hand trolleys Sack-/hand truck pallet trucks Electric lift truck Cars |
| Standard profile clearance approx. (mm) | 5 mm, rubber spacers |
| Connection | Plastic-coated steel cable |
| Max. width/profile length for individual section (mm): | 1200 |
| Profile width (mm) | 28.65 |
| Depth/walking depth for individual section (mm): | 800 |
| Weight (kg/m²) | 27,7 |
| Support chassis | Reinforced support chassis made using rigid aluminium with sound absorbing insulation on the underside |
| Tread surface | Recessed, robust, weather-proof profiled rubber inserts. Combined with stainless steel tiles for optimum way guidance for the blind and visually impaired (acc. to DIN 32984) in the entrance area. |
| Slip resistance | Slip-resistance of the rubber insert: R9, slip-resistance of the stainless steel tiles: R10 (in accordance with DIN 51130) |

| Accessories |
|--|
| emco installation frame 500: 500-25 AL Aluminium |
| emco installation frame 500: 500-25 CN Chrome-nickel steel (V2A) |
| emco LUMINA: LUMINA + LED Aluminium |
| emco cover strip: C22 Chrome-nickel steel (V2A) |
| emco dirt collection well: 5000 AL Aluminium |
| emco dirt collection well: 5000 CN Chrome-nickel steel (V2A) |
| emco dirt collection well: 5000 AL+ Aluminium |
| emco dirt collection well: 5000 CN+ Chrome-nickel steel (V2A) |
| emco dirt collection well: 5022 AL Aluminium |
| emco dirt collection well: 5022 CN Chrome-nickel steel (V2A) |
| emco dirt collection well: 5022 AL+ Aluminium |
| emco dirt collection well: 5022 CN+ Chrome-nickel steel (V2A) |
| emco dirt collection well: 5022 AL Aluminium |
| emco dirt collection well: 5022 CN Chrome-nickel steel (V2A) |
| emco dirt collection well: 5022 AL+ Aluminium |
| emco dirt collection well: 5022 CN+ Chrome-nickel steel (V2A) |
| emco dirt collection well: 5000 AL Aluminium |
| emco dirt collection well: 5000 CN Chrome-nickel steel (V2A) |
| emco dirt collection well: 5000 AL+ Aluminium |
| emco dirt collection well: 5000 CN+ Chrome-nickel steel (V2A) |
| emco special frame with substructure: A Version A: with installation frame, rectangular tube profiles, grid support and height adjustment. |
| emco special frame with substructure: B Version B: with installation frame, grid support and rectangular tube profiles |
| emco special frame with substructure: C Type C: with installation frame and rectangular tube profiles |
| Mat joining brackets: MV Supplied as standard with mats in several parts |
| Rubber underlay 3 mm: GU 3 |
| Rubber underlay 5 mm: GU 5 |
| Rubber underlay 1 mm: GU 1 |

Model 22 SPIN/SG

Suitable for:

Retirement homes and Care-/Nursery Homes

Arena

medical practice

Train station

DIY store

Offices and administrative buildings

Family home

Shopping centre

Retail sector

University / Higher education institution

airport

Hotel

Industry

Kindergarten/Nursery

Clinic/Hospital

Warehouse

Apartment building

Trade fair

School

Sports hall

Supermarket

Service and services

Construction site advice

Dimensioning

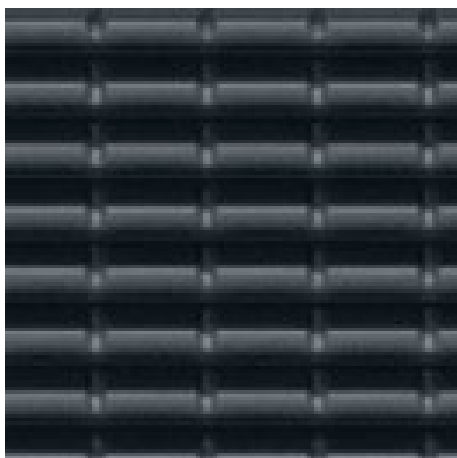
Measured using laser measuring device on site.

Installation service

Fitting and installation service

Model 22 SPIN/SG

Colours



black

Warranty conditions are available at:
www.emco-bau.com/en/warranty-conditions/

Subject to technical modifications

emco Bautechnik GmbH · Breslauer Straße 34 - 38 · D-49808 Lingen (Ems)
· Germany · Phone: +49 (0) 591/9140-500 · Fax: +49 (0) 591/9140-852 · Email:
bau@emco.de · www.emco-bau.com

