



Reference report **DATEV, Nuremberg**

Networking right at the entrance

Designing clean entrances





An innovative concept

As one of the largest software companies in Germany, DATEV offers tax consultants, auditors, lawyers as well as their clients, mostly small and medium-sized businesses, high quality IT services. With its headquarters in Nuremberg and founded in 1966, the company currently employs 7,000 people and is present in 25 national and international locations. According to the motto “Shaping the future. Together”, the DATEV cooperative society stands for the development of innovative concepts and close cooperation with its members – in this way, the economic development of its customers is promoted in the long term.

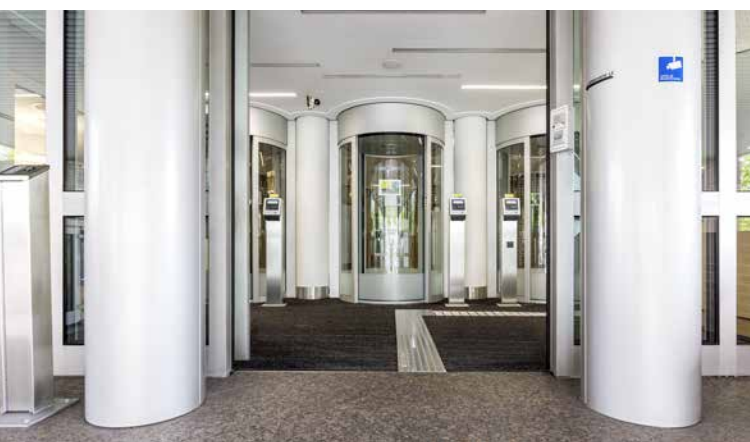
Responsibility for employees and society

Sustainability and protection of the environment have been important parts of DATEV eG since 1996. This is reflected not only in its logo, which is green already, but also in the guidelines for sustainable management. As an attractive employer, DATEV assumes social responsibility for its employees and supports many projects, currently including a new nursery building, so-called Green IT activities, resource savings as well as a barrier-free entrance area for the Datev III building.

Barrier-free access begins at the entrance

The main office in Nuremberg has five building complexes of its own – including the new IT campus, which opened in 2015 when 110 construction companies, planning and engineering offices were involved in its construction. The DATEV III building, which was built in 1983, is also located in Nuremberg and is home to different areas of DATEVeG – more than 80,000 postal items and payrolls are processed there per day. On account of the daily wear and tear, the entrance area of the building required modernisation and redesigning. Particular attention was to be paid to the aspect of barrier-free access. With the emco SPIN® SAFE tactile guidance system, orientation is now also significantly easier for the blind and visually impaired.

The term “barrier-free access” is often equated with the concept of facilities suitable for wheelchair users. Yet other cognitive restrictions such as blindness and visual impairment are neglected, although these should be taken into account particularly in the planning and refurbishment of public buildings. These special guidance systems





“DATEV traditionally stands for future-oriented systems. Now emco SPIN® SAFE, an equally innovative system on the ground, guarantees orientation in the entrance area of the DATEV III building.”

Sandra Denzinger
Architect, Technical Building Management

already exist in many locations, on pavements as well as in various places – but the situation becomes problematic when the external and internal guidance systems are interrupted by the entrance area, so that cognitively impaired people lose their orientation and have difficulty finding their way again.

Future-oriented solution for the entrance area

emco SPIN® SAFE offers the optimum solution for this problem and, thanks to the integrated guidance system, makes visually impaired employees and visitors to DATEV eG feel at ease as soon as they reach the entrance. The combination of external and internal guidance systems ensures that there is no break in orientation, since the robust stainless steel elements, which are aesthetically integrated into the whole, offer help through tactile, visual and acoustic features. In this way, the emco SPIN® SAFE system combines barrier-free functionality with the highest aesthetic standards.

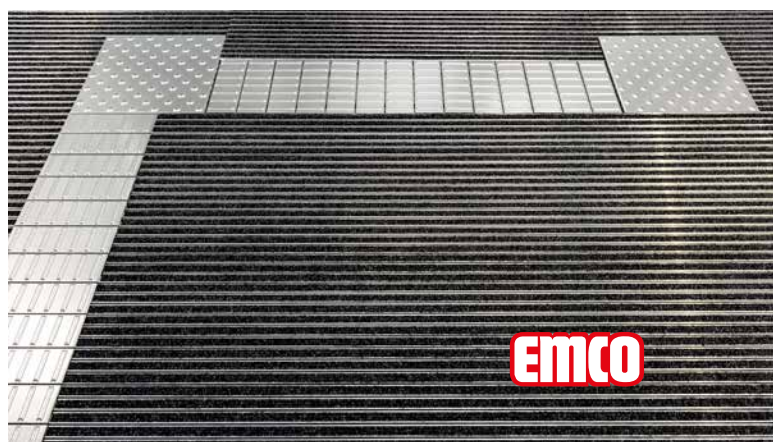


Building: DATEV III company building, Nuremberg

System solution: emco SPIN® SAFE

Building size: 54000 m² sq.m.

Year of construction: Spring 2017



emco Bau- und Klimatechnik
GmbH & Co. KG
Postfach 1860
D-49803 Lingen (Ems)
Germany
Tel. +49 (0) 591 9140-0
Fax +49 (0) 591 9140-852
bau@emco.de

www.emco.de

emco UK Ltd
5 Plough Road
Wellington
Telford
TF1 1ET
Tel. (+44) 01952 256446
Fax (+44) 01952 262940
enquiries@emcouk.co.uk

UK / 02.18 – Subject to technical modifications.

A member of the  EMCO
Group