

# Printing-Data-Manual

## Minimum requirements on printing files for logomats emco Image and Smart

If you want to create the printing files yourself you need to consider the following details.  
In case you have further questions please contact us.

## File-formats

### Bitmaps:

- PCX, Tiff, PSD, JPEG, PNG, GIF

The file should be reduced on one layer.

Please generate the file as follows:

- Resolution: 254 dpi
- Scale: 1:10

Thus results in 1 pixel = 1 millimeter

(For e.g. a mat in 2000 x 1000 px = 200 x 100 cm)

### Vector-files:

- PDF, EPS, AI, CDR

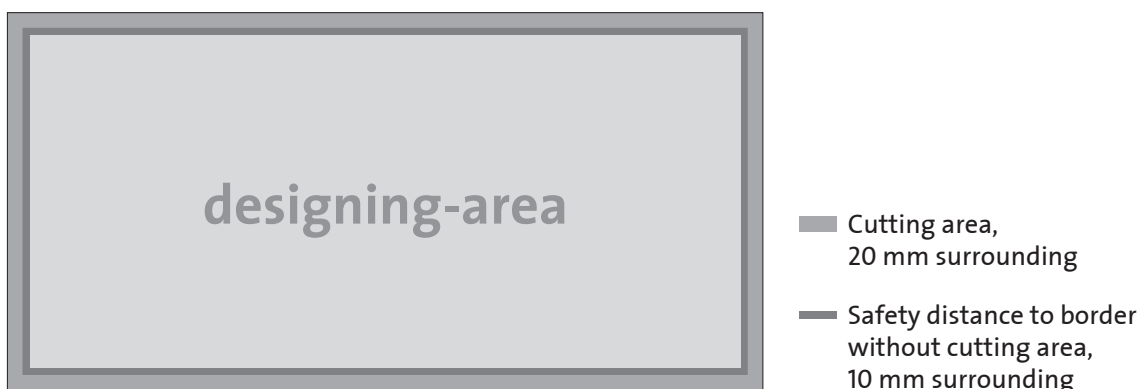
Containing fonts please always send as vectors;  
In case the file contains a shortcut please  
send them over in original version together  
with the vector-file.

Not qualified formats:

Word, Powerpoint, Open Office and similar

## Add-Ons and safety distance in the file

Place important objects such as logos, texts, etc. with a distance of min 30 mm surrounding from exterior border of the mat.

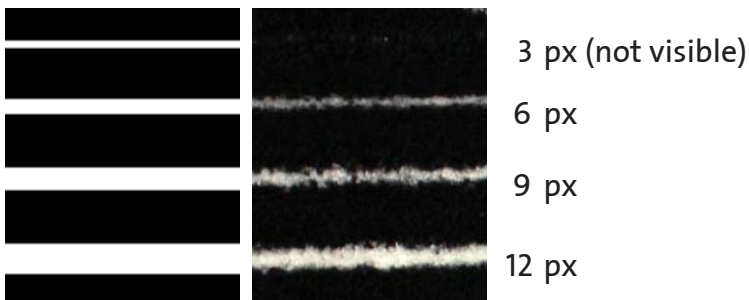
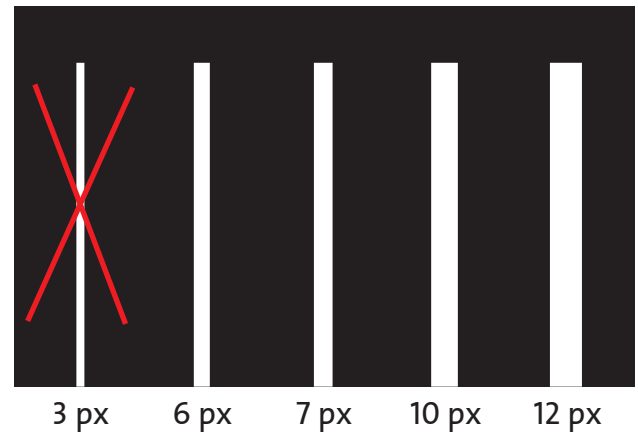
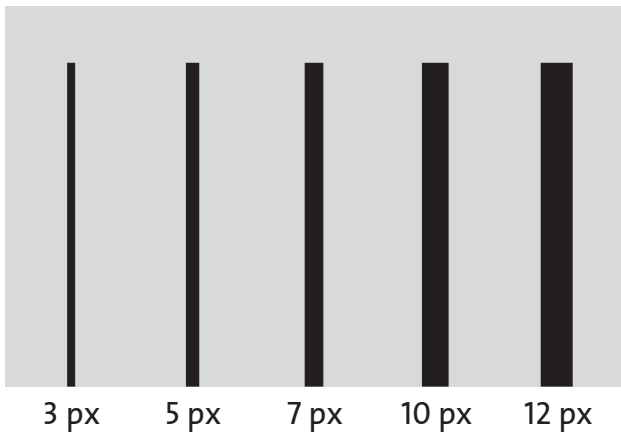


### Example:

External dimension of mat incl. rubber edge:	200 x 100 cm
Final measures of mat without rubber edge:	196 x 96 cm
Free area for layout:	194 x 94 cm

### Thickness of lines:

- Positive lines (dark lines on light background) should be at least 3 px
- Negative lines (light lines on dark background) should be at least 6 px



Thickness of lines 10 px  
(dark colors eliminate lighter ones)

CHOQUETTE

CHOQUETTE

Negative line, approx. 5 px thick

Welche

Welche

Negative line, approx. 8 px thick

SCHÖN

SCHÖN

10 px thickness, clear appearance of text, thin serifs are not visible



**Text on light and dark background**

In this case text must be adapted in particular areas:



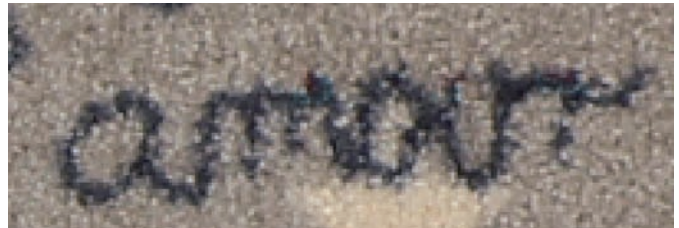
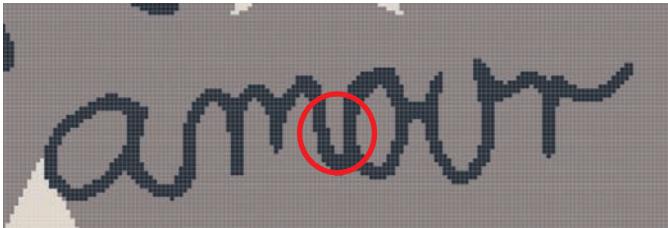
Approx. 3-7 px in green area



Approx. 6-9 px in green area

**ATTENTION!**

Please be aware to keep the safety distance also in areas between!



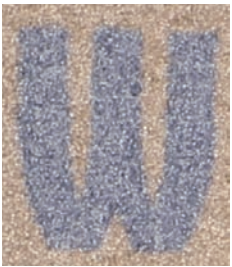
Area between with 3 px is too little, text deviates!



In this case the text in marked area deviates since light areas with 2-3 px are too small!

## Contrasts

If elements should clearly stand out from background, make sure that the differences of color-saturation and brightness of each color are significant. This is the only way to reach good contrasts



„W“ bad contrast

„E“ good contrast



Bad contrast due to similar brightness values



Due to different color systems and/or missing calibration the RGB-values given by us might differ from printed colors. So we recommend always to refer to our color ring/ sample box.

# emco IMAGE

45 Farben - RGB- + Pantone-Richtwerte

sv - 17.12.2015



<b>10</b> R/G/B 249/225/30 P. 101 C	<b>20</b> R/G/B 253/200/47 P. 123 C	<b>30</b> R/G/B 255/121/0 P. 151 C	<b>40</b> R/G/B 255/88/0 P. 166 C	<b>50</b> R/G/B 227/155/108 P. 7412 C	<b>60</b> R/G/B 224/0/52 P. 200 C
<b>70</b> R/G/B 123/41/39 P. 7594 C	<b>80</b> R/G/B 151/35/63 P. 1955 C	<b>90</b> R/G/B 245/63/91 P. 711 C	<b>100</b> R/G/B 222/56/49 P. 7626 C	<b>110</b> R/G/B 110/38/123 P. 7657 C	<b>120</b> R/G/B 102/57/183 P. 268 C
<b>130</b> R/G/B 110/37/133 P. 7680 C	<b>140</b> R/G/B 209/0/116 P. 219 C	<b>150</b> R/G/B 255/193/156 P. 488 C	<b>160</b> R/G/B 0/57/166 P. 661 C	<b>170</b> R/G/B 106/173/228 P. 2170 C	<b>180</b> R/G/B 0/82/147 P. 2186 C
<b>190</b> R/G/B 0/135/124 P. 3295 C	<b>200</b> R/G/B 11/34/101 P. 2766 C	<b>210</b> R/G/B 0/68/56 P. 2266 C	<b>220</b> R/G/B 127/213/197 P. 7472 C	<b>230</b> R/G/B 0/105/60 P. 349 C	<b>240</b> R/G/B 0/155/72 P. 2257 C
<b>250</b> R/G/B 0/102/67 P. 342 C	<b>260</b> R/G/B 149/74/9 P. 731 C	<b>270</b> R/G/B 162/151/145 P. 423 C	<b>280</b> R/G/B 39/36/69 P. 5255 C	<b>290</b> R/G/B 0/115/207 P. 2382 C	<b>300</b> R/G/B 209/212/211 P. 427 C
<b>310</b> R/G/B 112/61/41 P. 478 C	<b>320</b> R/G/B 211/169/133 P. 2311 C	<b>330</b> R/G/B 76/51/39 P. 7518 C	<b>340</b> R/G/B 229/203/177 P. 7604 C	<b>350</b> R/G/B 81/98/111 P. 7545 C	<b>360</b> R/G/B 195/200/200 P. 429 C
<b>370</b> R/G/B 129/138/143 P. 430 C	<b>380</b> R/G/B 27/36/42 P. 431 C	<b>390</b> R/G/B 0/0/0	<b>400</b> R/G/B 255/255/255	<b>410</b> R/G/B 55/66/74 P. 432 C	<b>420</b> R/G/B 142/125/56 P. 7503 C
<b>430</b> R/G/B 226/174/129 P. 720 C	<b>440</b> R/G/B 52/178/51 P. 362 C	<b>450</b> R/G/B 255/161/0 P. 2013 C			



# emco SMART

RGB- + Pantone-Richtwerte

sv - 10.12.2015



<p><b>522</b></p> <p>R/G/B 255/204/153 P. 156 C</p>	<p><b>10</b></p> <p>R/G/B 254/242/57 P. 395 C</p>	<p><b>20</b></p> <p>R/G/B 254/204/6 P. 123 C</p>	<p><b>40</b></p> <p>R/G/B 248/102/15 P. 1595 C</p>
<p><b>60</b></p> <p>R/G/B 203/16/38 P. 200 C</p>	<p><b>80</b></p> <p>R/G/B 115/12/46 P. 1955 C</p>	<p><b>140</b></p> <p>R/G/B 214/36/134 P. 233 C</p>	<p><b>130</b></p> <p>R/G/B 98/51/133 P. 7678 C</p>
<p><b>757</b></p> <p>R/G/B 177/207/232 P. 544 C</p>	<p><b>570</b></p> <p>R/G/B 122/223/234 P. 305 C</p>	<p><b>290</b></p> <p>R/G/B 19/131/209 P. 2172 C</p>	<p><b>160</b></p> <p>R/G/B 0/57/166 P. 286 C</p>
<p><b>200</b></p> <p>R/G/B 19/40/105 P. 654 C</p>	<p><b>540</b></p> <p>R/G/B 199/237/165 P. 7486 C</p>	<p><b>780</b></p> <p>R/G/B 104/204/134 P. 2248 C</p>	<p><b>190</b></p> <p>R/G/B 0/107/96 P. 328 C</p>
<p><b>630</b></p> <p>R/G/B 170/204/33 P. 382 C</p>	<p><b>440</b></p> <p>R/G/B 66/158/21 P. 362 C</p>	<p><b>810</b></p> <p>R/G/B 50/92/48 P. 357 C</p>	<p><b>867</b></p> <p>R/G/B 2/71/38 P. 7484 C</p>
<p><b>340</b></p> <p>R/G/B 237/224/213 P. 2309 C</p>	<p><b>320</b></p> <p>R/G/B 202/172/156 P. 4735 C</p>	<p><b>325</b></p> <p>R/G/B 176/153/141 P. Warm Gray 5 C</p>	<p><b>480</b></p> <p>R/G/B 135/83/67 P. 7581C</p>
<p><b>310</b></p> <p>R/G/B 115/63/47 P. 7595 C</p>	<p><b>330</b></p> <p>R/G/B 61/47/43 P. 412 C</p>	<p><b>360</b></p> <p>R/G/B 175/180/184 P. 7543 C</p>	<p><b>370</b></p> <p>R/G/B 112/119/128 P. 7544 C</p>
<p><b>410</b></p> <p>R/G/B 79/86/96 P. 7545 C</p>	<p><b>670</b></p> <p>R/G/B 70/68/84 P. 2379 C</p>	<p><b>390</b></p> <p>R/G/B 0/0/0</p>	<p><b>400</b></p> <p>R/G/B 255/255/255</p>