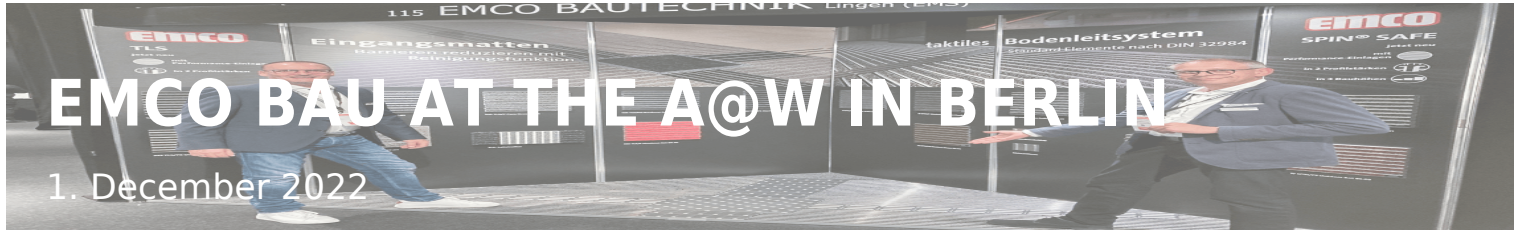


MAGAZINE



ARCHITECT@WORK took place again in Berlin on 19 and 20 October 2022. emco Bau was there as an exhibitor and looks back on a successful participation. First of all, it is very pleasing that visitor numbers were again at the pre-pandemic level with just under 3,300. The fair's supporters have obviously remained loyal to it over the difficult period, and new architecture and design fans have joined in.

ARCHITECT@WORK took place again in Berlin on 19 and 20 October 2022. emco Bau was there as an exhibitor and looks back on a successful participation. First of all, it is very pleasing that visitor numbers were again at the pre-pandemic level with just under 3,300. The fair's supporters have obviously remained loyal to it over the difficult period, and new architecture and design fans have joined in.

The demand for news from the areas of materials, products and projects is great, which also became clear in the top-class guest lectures by architects and experts, who shared their experiences with the numerous audience members. Not only the great variety of perspectives and ways of thinking, but also the opportunity for intensive personal exchange determined the trade fair events and brought many new impulses and ideas. There was also a lively exchange at the exhibition stands - no wonder that the exhibitors were also more than satisfied. This was also the case for emco Bau ...

Great success for emco Bau

Andreas Oellrich (Architectural Consultant, Field Service Region West, in the picture on the left) and Andreas Plonka (Architectural Consultant, Field Service Region East, in the picture on the right) were part of the emco team on site and give a brief insight into their impressions of the fair.

What was your experience at this year's architect@work - what kind of feedback did you get from the visitors?

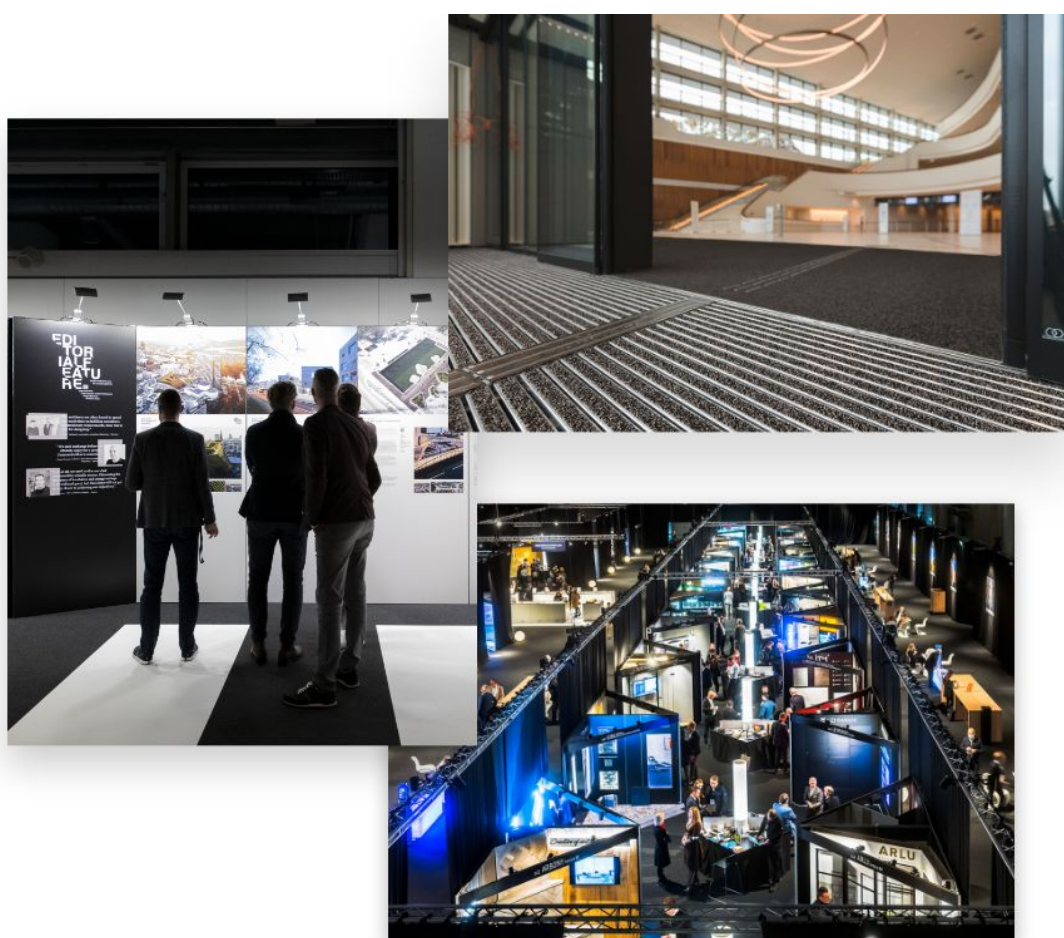
Andreas Oellrich: Once again, we found that emco is very well known as a brand in the area of commercial entrance mats and commercial entrance carpets, which became clear in the discussions.

Andreas Plonka: The guests we spoke to at the stand were all enthusiastic about the trade fair - a great event for everyone involved.

What were the main topics discussed at the stand?

Oellrich: Our main topic was accessibility and especially our tactile guidance systems ...

Plonka: ... the products presented in this regard included the SpinSafe and TLS systems, in combination with our premium collection.



The focus was therefore on tactile guidance systems and thus on the topic of accessibility. What does emco offer architects in this regard?

Oellrich: In addition to the optimally matched products, we offer architects professional needs assessment and advice as well as extensive information material: via brochures and samples as well as on our website and social media channels, for example LinkedIn.

Plonka: What is particularly convincing is the high degree of design freedom we offer - with two variants and our services, such as planning support and on-site

measurement and fitting.

What is particularly important to the target group?

Plonka: In the discussions at the stand, it became clear that architects particularly appreciate emco-specific tender texts ...

Oellrich: ... in addition, they would like to be able to try out the product for themselves using a blind long stick.

What core messages did emco Bau convey at the trade fair?

Plonka: With our two variants, we demonstrated that accessibility for visually impaired people can also be achieved with our Commercial entrance mats without interruption.

Oellrich: In addition, we underlined our expertise in the area of needs assessment and consulting and were thus able to show once again that we are the professionals in the area of commercial entrance mats and commercial entrance carpets systems.

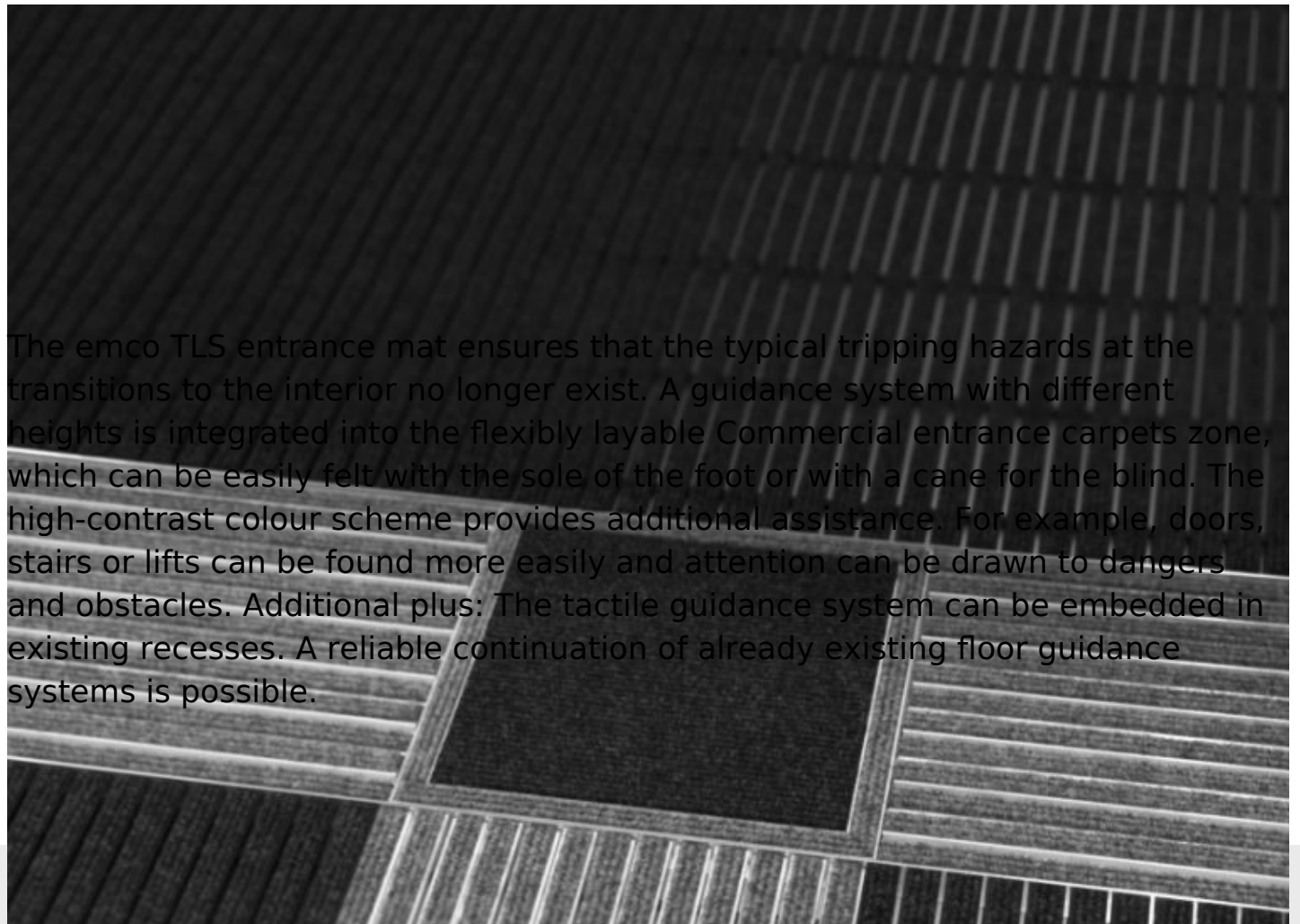
The tactile guidance systems from emco

Commercial entrance carpets system can meet the requirements of wayfinding. Since every guest enters a building through an entrance, it is important that no barriers are created here. emco Bau has developed excellent innovations for this challenge with three sophisticated Tactile Guidance Systems that close the tactile gap in the vestibule and entrance area to the inside of the building in the indoor and covered outdoor area and function excellently as a guidance system in the building. Different inlays, profile heights and thicknesses offer many design options here

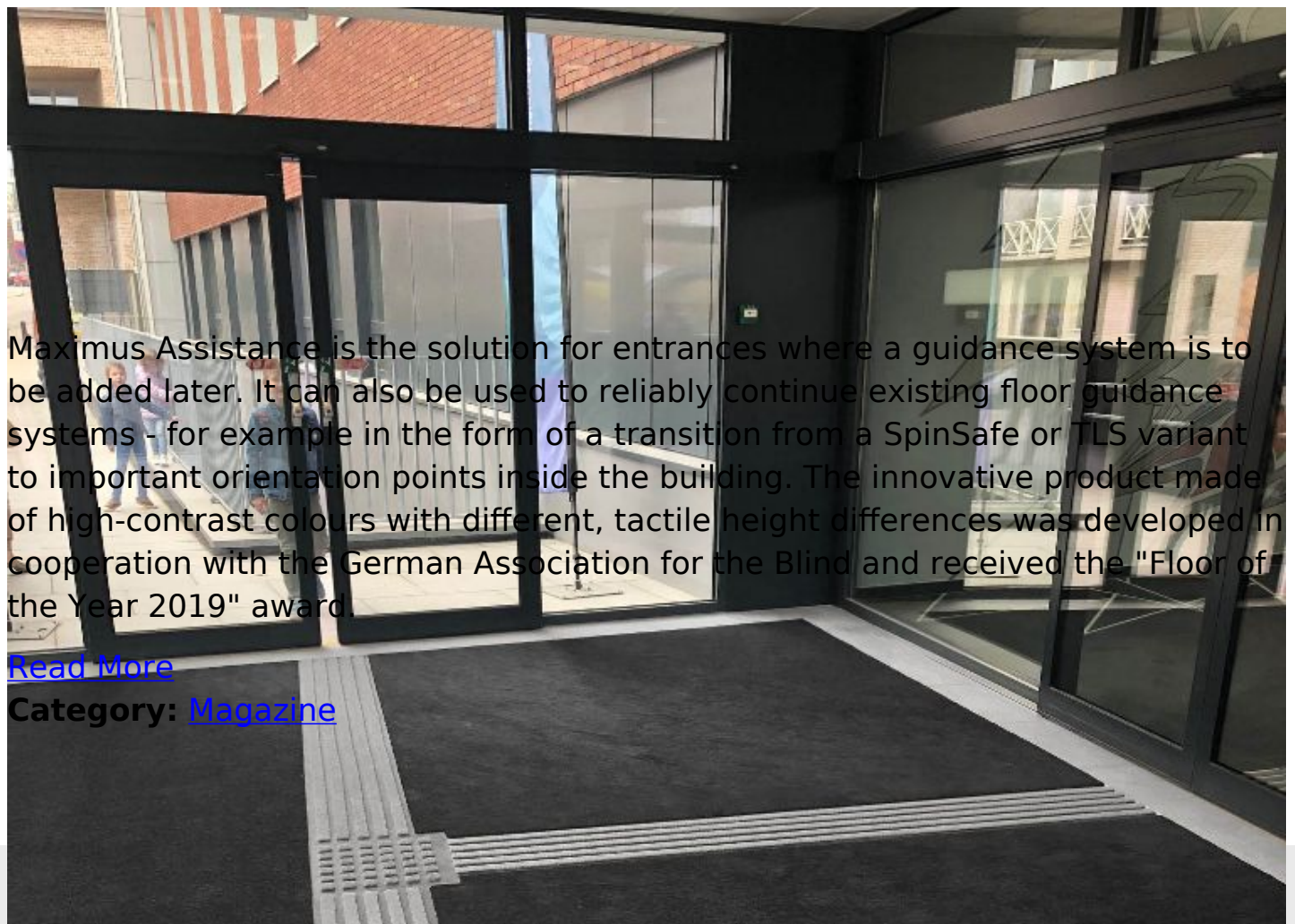


In vestibules and entrance areas, a gap in the guidance system for the blind quickly becomes a dangerous tripping hazard for blind and visually impaired people. SpinSafe solves the problem as a seamless guidance system in entrances with an integrated dirt trap system. The Commercial entrance mats innovation

with integrated stainless steel elements enables good orientation, directions and changes of direction can be easily and clearly felt with the feet or a cane for the blind. The tactile floor information complies with the standards of DIN 32984. In addition to the tactile floor indicators, the auditory impression also changes significantly when a blind person's cane is used. This also makes it easier to find doors, stairs and lifts. Different inlays, material heights and profile thicknesses make SpinSafe a high-quality solution for architects, because it can be used to create visually harmonious pathways.



The emco TLS entrance mat ensures that the typical tripping hazards at the transitions to the interior no longer exist. A guidance system with different heights is integrated into the flexibly layable Commercial entrance carpets zone, which can be easily felt with the sole of the foot or with a cane for the blind. The high-contrast colour scheme provides additional assistance. For example, doors, stairs or lifts can be found more easily and attention can be drawn to dangers and obstacles. Additional plus: The tactile guidance system can be embedded in existing recesses. A reliable continuation of already existing floor guidance systems is possible.



Maximus Assistance is the solution for entrances where a guidance system is to be added later. It can also be used to reliably continue existing floor guidance systems - for example in the form of a transition from a SpinSafe or TLS variant to important orientation points inside the building. The innovative product made of high-contrast colours with different, tactile height differences was developed in cooperation with the German Association for the Blind and received the "Floor of the Year 2019" award.

[Read More](#)

Category: [Magazine](#)



Over 1200 years ago, Emperor Charlemagne made Aachen the centre of his legendary empire. He built his residence on the ruins of Roman baths between 790 and 800 with the octagonal Palatine chapel as its centrepiece. Today, Aachen cathedral is one of the best-maintained architectural monuments of the Carolingian period and is a magnet for visitors from around the world. Deeply enmeshed in European history and the birth of Germany, this heterogeneous building complex is a hugely symbolic attraction in the middle of the historic old town. The experiment conducted by the TFI Aachen institute in this famous architectural monument is more than just symbolic. It used the emco 3-zone cleaning system laid on site as a test strip to measure the amount of dirt it absorbed. It proved to be a convincing demonstration.

Over 1200 years ago, Emperor Charlemagne made Aachen the centre of his legendary empire. He built his residence on the ruins of Roman baths between 790 and 800 with the octagonal Palatine chapel as its centrepiece. Today, Aachen cathedral is one of the best-maintained architectural monuments of the Carolingian period and is a magnet for visitors from around the world. Deeply enmeshed in European history and the birth of Germany, this heterogeneous building complex is a hugely symbolic attraction in the middle of the historic old town. The experiment conducted by the TFI Aachen institute in this famous architectural monument is more than just symbolic. It used the [emco 3-zone cleaning system](#) laid on site as a test strip to measure the amount of dirt it absorbed. It proved to be a convincing demonstration.

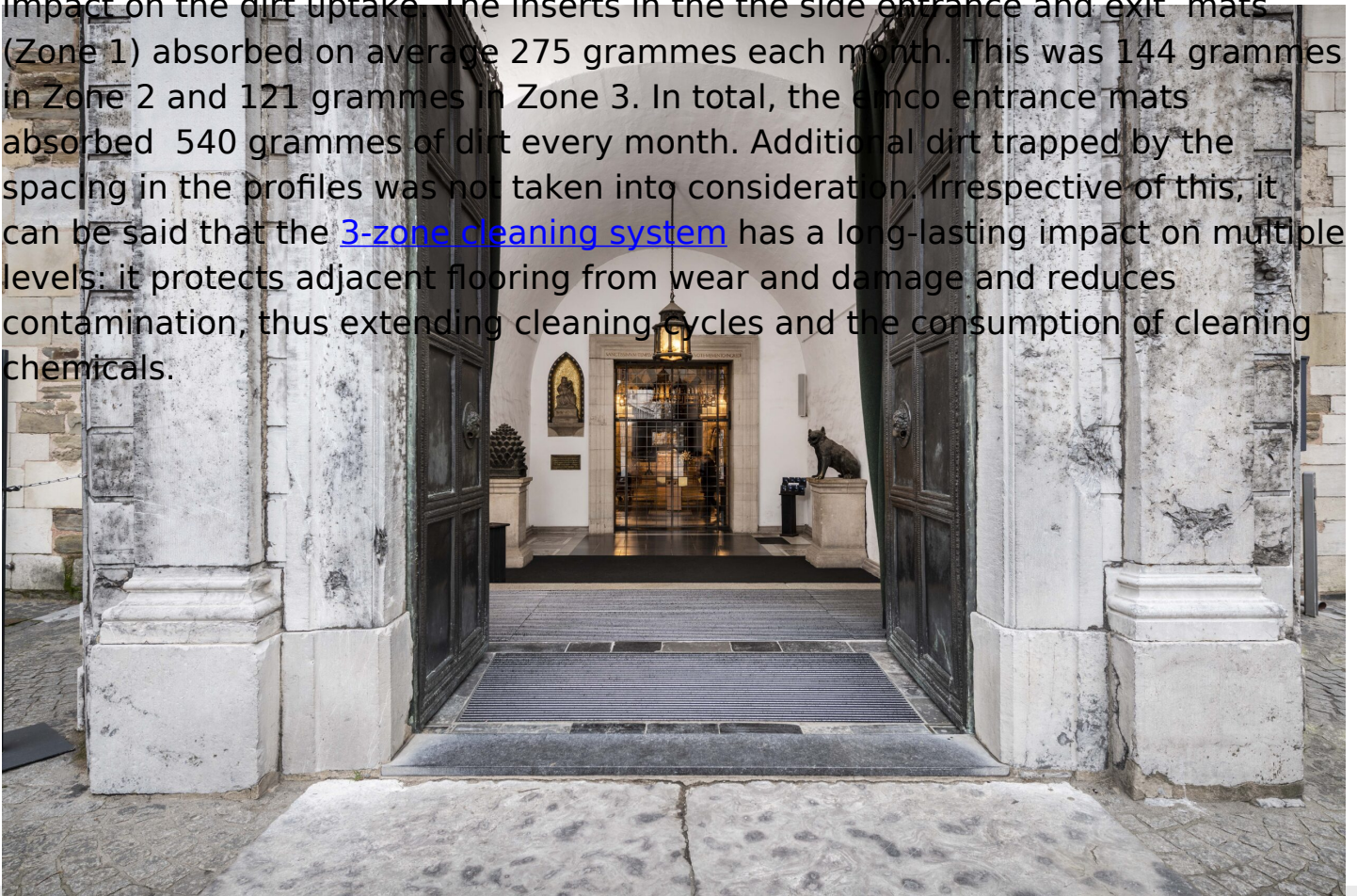


In 1978, Aachen Cathedral became the first building in Germany and only the second building ever to be granted World Heritage status. It remains a popular tourist destination today for both believers and historians. The UNESCO provisions state that the town centre is also to be preserved as a historic entity. The building is therefore also protected from the outside. In order to ensure its silhouette and lines of sight are not interrupted, a buffer zone was defined around the cathedral within which building is prohibited. Approximately 1.2 million people pass through its doors every year. The emco 3-zone cleaning system was installed in the entrance to the cathedral to significantly reduce the dirt visitors bring into the building and therefore protect its structure. What makes the Aachen cathedral project special is that the [TFI Aachen](#) institute used the emco 3-zone cleaning system as a test strip.



From July 2020, the number of visitors over the following twelve months was recorded and the dirt levels were determined in the emco MARSCHALL Original (side entrances), [emco MARSCHALL Premium](#) (main entrance, or Wolf's Door, and the vestibule), and emco Clean Off (at the base of the stairs). Over the observation period, approximately 423,000 people passed through the entrances. The TFI team cleaned the entrance mats every week to determine the dirt levels and scanned the material to document changes in appearance.

Due to the pandemic, visitors had to be guided through the entrance area. The protective measures had to be taken into consideration but this also had an impact on the dirt uptake. The inserts in the the side entrance and exit mats (Zone 1) absorbed on average 275 grammes each month. This was 144 grammes in Zone 2 and 121 grammes in Zone 3. In total, the emco entrance mats absorbed 540 grammes of dirt every month. Additional dirt trapped by the spacing in the profiles was not taken into consideration. Irrespective of this, it can be said that the [3-zone cleaning system](#) has a long-lasting impact on multiple levels: it protects adjacent flooring from wear and damage and reduces contamination, thus extending cleaning cycles and the consumption of cleaning chemicals.



It would also have been possible to reduce the quantity of dirt and moisture in Zone 3 if Zones 1 and 2 had been longer, as more dirt would have been absorbed over the greater distance. Unfortunately, this was not possible in the west entrance due to the configuration of the building, a common problem in historic buildings which require special solutions to survive for centuries. "Aachen Cathedral is lifetime's work for the cathedral master builder – it is a site that must be maintained for future generations," explains Helmut Mairitz, Cathedral Master Builder since 2000. The [emco 3-zone cleaning system](#) clearly supports this goal as the effective dirt uptake protects the interior of Aachen cathedral and thus contributes to preserving this precious structure, ensuring it is available for future generations to visit.

Please do not hesitate to contact us for help with your project.

[Read More](#)

Category: [Magazine](#)



RENOVATION & EFFICIENCY

2. October 2022

We already knew this at the 13th International Architecture Exhibition, the Venice Biennale: 'reduce, reuse, recycle' is the mantra of our time, meaning building redevelopment should take precedence over newbuilds. With this in mind, architects now have to provide comprehensive advice to the developers they are working with on all matters regarding energy-efficient renovation. This is all based on holistic thinking and planning which covers the building envelope and technology, renewable energy, and the opportunities provided by smart building. The details, such as entrance mats, which are so much more than just dirt collectors, should not be ignored in all of this

We already knew this at the 13th International Architecture Exhibition, the Venice Biennale: 'reduce, reuse, recycle' is the mantra of our time, meaning building redevelopment should take precedence over newbuilds. With this in mind, architects now have to provide comprehensive advice to the developers they are working with on all matters regarding energy-efficient renovation. This is all based on holistic thinking and planning which covers the building envelope and technology, renewable energy, and the opportunities provided by smart building. The details, such as entrance mats, which are so much more than just dirt collectors, should not be ignored in all of this

Ecological renovation and creating living spaces

The two topics on everyone's lips today are building efficiency and the creation of living spaces. Here, architects prefer to renovate existing structures rather than creating newbuilds and the BdA (Association of German Architects) also makes reference to the disastrous ecological consequences and costs of newbuilds. On the one hand is the gas-guzzling construction machinery and lorries which are needed to transport materials, and on the other, the production of construction materials, which devours vast quantities of (fossil) energy, resulting in high CO2 emissions. In addition to this, excessive amounts of finite resources such as gravel, sand, clay and ores are being consumed.



Architects for Future: Appreciating what is available

The issues raised by Fridays for Future have now also reached the architectural profession. Architects for Future is demanding the number of renovations increases from one to at least four per cent. The fact that the Parisian architect Anne Lacaton and her partner Jean-Philippe Vassal won the Pritzker Architecture Prize for their conversion projects proves that this takes creativity and forward-thinking and can succeed at the highest level. There are other reasons to renovate. Building authorities are not keeping up with applications for newbuilds and there is a shortage of materials. Architects for Future therefore demands an end to random demolition and new construction, and the control of demolition permits. Such an ecological measure would be conducive to building redevelopment.



When standards become a stumbling block

What makes building redevelopment really difficult is the labyrinth of local standards. Many standards and building specifications are easier to implement in newbuilds than renovations. The nightmare of liability prevents many from seeking out unconventional solutions. People are now talking about a conversion regulation which would reset the priorities, a law favouring building redevelopment over newbuilds, creating the requisite room for manoeuvre. And many prominent examples of spiralling costs and out of control schedules act as a discouragement in addition to the pile of standards. For example, costs doubled at the Deutsches Museum in Munich during renovation. To be able to make building redevelopment cheaper and more sustainable, Architects for Future is calling for a new 'E' type building to which some of the over 3,000 standards do not apply.

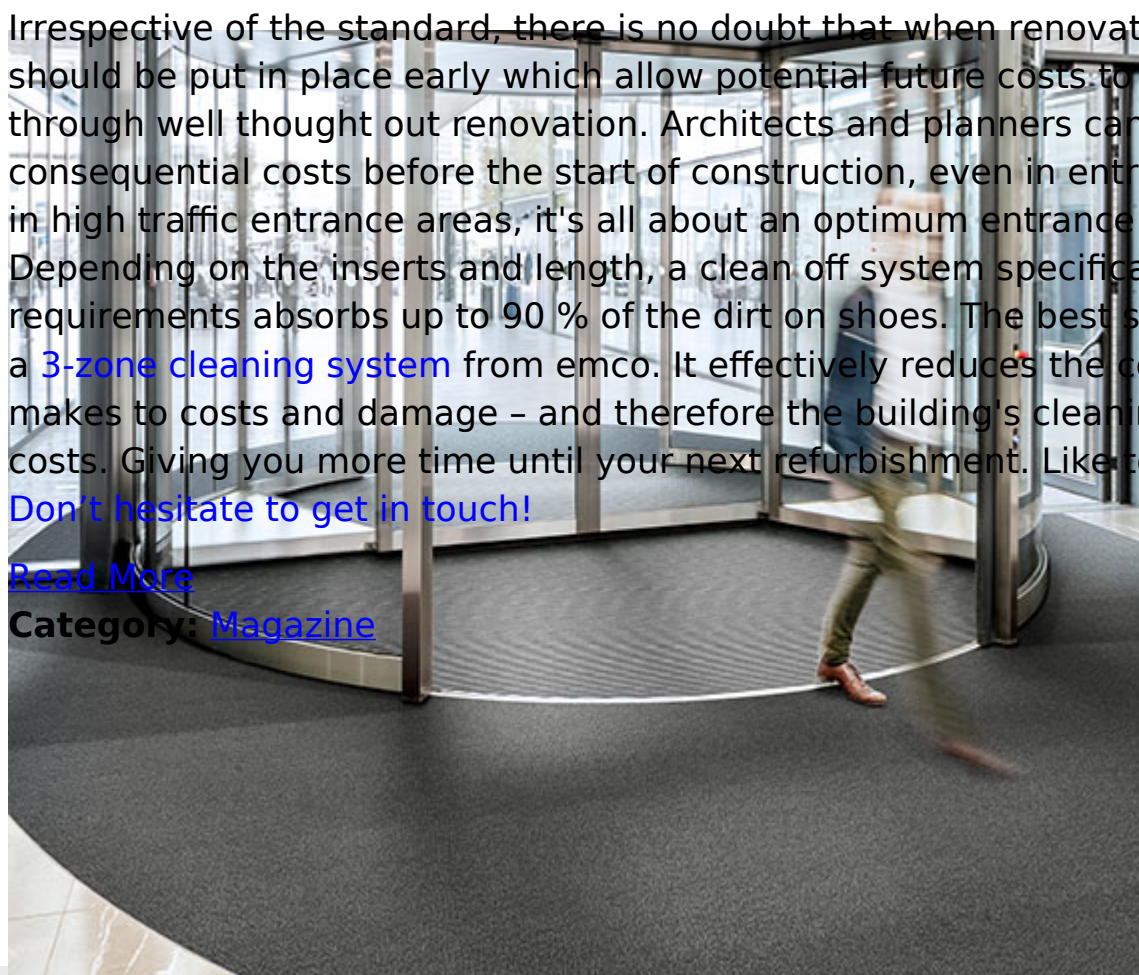
Planning in clean off zones from the start

Irrespective of the standard, there is no doubt that when renovating, plans should be put in place early which allow potential future costs to be saved through well thought out renovation. Architects and planners can prevent consequential costs before the start of construction, even in entrance areas. And in high traffic entrance areas, it's all about an optimum entrance mat system. Depending on the inserts and length, a clean off system specifically adapted to requirements absorbs up to 90 % of the dirt on shoes. The best solution for you is a **3-zone cleaning system** from emco. It effectively reduces the contribution dirt makes to costs and damage – and therefore the building's cleaning intervals and costs. Giving you more time until your next refurbishment. Like to know more?

[Don't hesitate to get in touch!](#)

[Read More](#)

Category: [Magazine](#)



VACATION IN THE HOTEL

4. August 2022

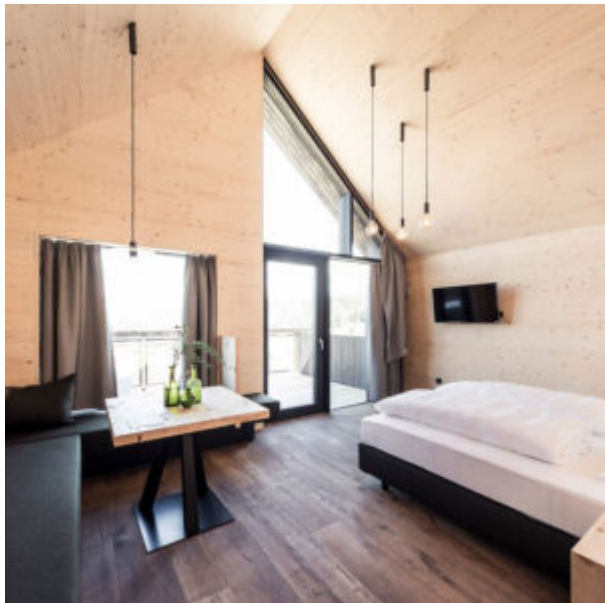
The summer vacations are here - and finally vacations without Corona restrictions again. Destinations around the world are now beckoning, from vibrant metropolises to dream beaches and undisturbed hideaways. The only question is, where to stay? Do you prefer a hotel or a vacation home? Both have their advantages, but the hotel offers more comfort. If you decide to stay in an architectural gem, you can be happy even before you enter your vacation home. One such gem is the Hotel Pfösl in South Tyrol.

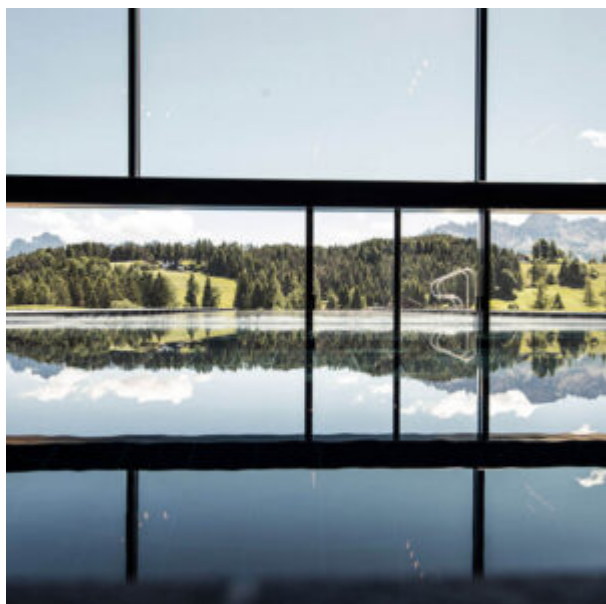


Hotel Pfösl in Südtirol, Fotografie von © Florian Andergassen

The jewel in the midst of beautiful nature can impress with an impressive list of awards in the field of architecture - here is just a selection: archilovers best project 2017 and 2019, AIT award best interior and architecture 2018, AIT platform sonderpreis hotel architektur 2017, Häuser des Jahres 2020 (shortlist), London international creative competition 2019 (shortlist), Bigsee wood award - Ljubljana 2019, Premio in/architettura 2020 ... Behind all this is a thoughtful, modern architecture, about which the architect couple Michaela Wolf and Gerd Bergmeister say: "A continuation of building in the existing, an integration of the listed barn, a building in the landscape. It is about connections between new and old by means of path clearing and purposefully placed measures, which form a unity with the whole. The landscape becomes the theme, becomes part of the architecture and vice versa. A withdrawal, a search for consciously chosen positions. A disappearance in the landscape. Here, too, the material as a connecting element between old and new, between inside and outside." This describes very well the merging of the new building with the listed structure and

surroundings.





Hotel Pfösl in South Tyrol, photography by © Florian Andergassen

The jewel in the midst of beautiful nature can impress with an impressive list of awards in the field of architecture - here is just a selection: archilovers best project 2017 and 2019, AIT award best interior and architecture 2018, AIT platform sonderpreis hotel architektur 2017, Häuser des Jahres 2020 (shortlist), London international creative competition 2019 (shortlist), Bigsee wood award - Ljubljana 2019, Premio in/architettura 2020 ... Behind all this is a thoughtful, modern architecture, about which the architect couple Michaela Wolf and Gerd Bergmeister say: "A continuation of building in the existing, an integration of the listed barn, a building in the landscape. It is about connections between new and old by means of path clearing and purposefully placed measures, which form a unity with the whole. The landscape becomes the theme, becomes part of the architecture and vice versa. A withdrawal, a search for consciously chosen positions. A disappearance in the landscape. Here, too, the material as a connecting element between old and new, between inside and outside." This describes very well the merging of the new building with the listed structure and surroundings.

Just the right place to finally recharge your batteries after a long lean period. Especially now, after the pandemic years, many long for an all-around soothing vacation, either to really relax again or to finally see something other than their own four walls and the familiar city. In any case, it is pleasant to be accommodated in a good hotel and not have to worry about anything but your own needs.

Let everything fall away from you in the hotel -

it's so easy

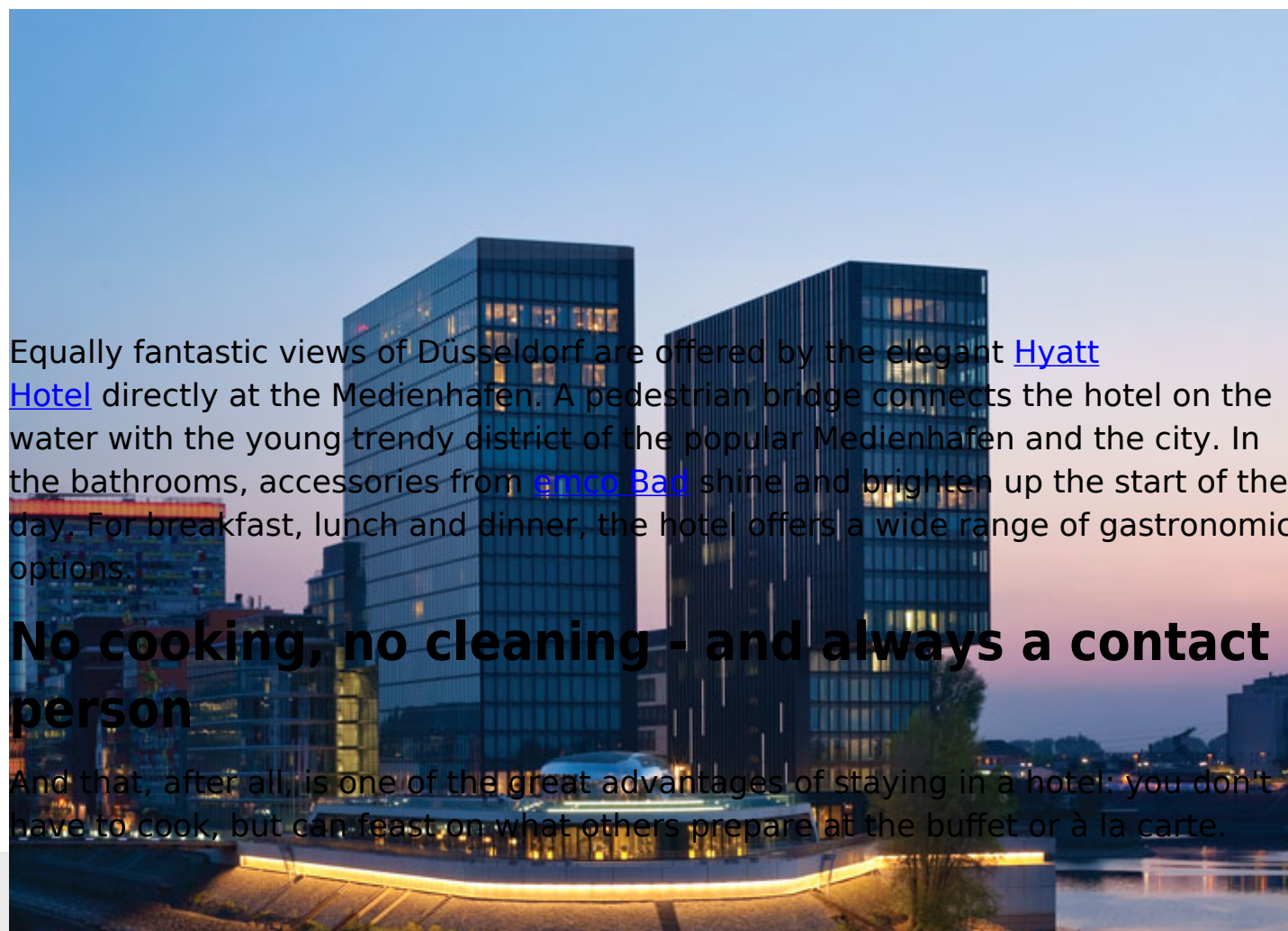
Check in, forget about your job, responsibilities and everything else - and let yourself be pampered all around. This is not only possible in South Tyrol, but is a general advantage of hotel vacations. Whether it's shopping or making up the bed, cooking or renting a car - that's taken care of by others who are also familiar with the local customs. Many things can be booked before the start of the trip (rental cars, excursions, restaurant visits) and make vacation planning much easier. A nice place to rely on others and give yourself over completely to your vacation is the Ruby Hotel in Düsseldorf.



Ruby Hotel in Düsseldorf, © Ruby Hotel

Here, HPP Architekten have conjured up a stylish welcome ambience on 13 floors

from the former Commerzbank high-rise, which is a listed building. To this end, the high-rise was stripped back to its shell and refurbished - including a spacious roof terrace and DGNB Gold certification. In 1998, the building with its style-defining construction and its curtain wall, which is considered the first elemental high-rise façade in Germany, was listed as a historic monument. Particularly striking: the rounded window openings, through which one can enjoy a great view of the Rhine metropolis.

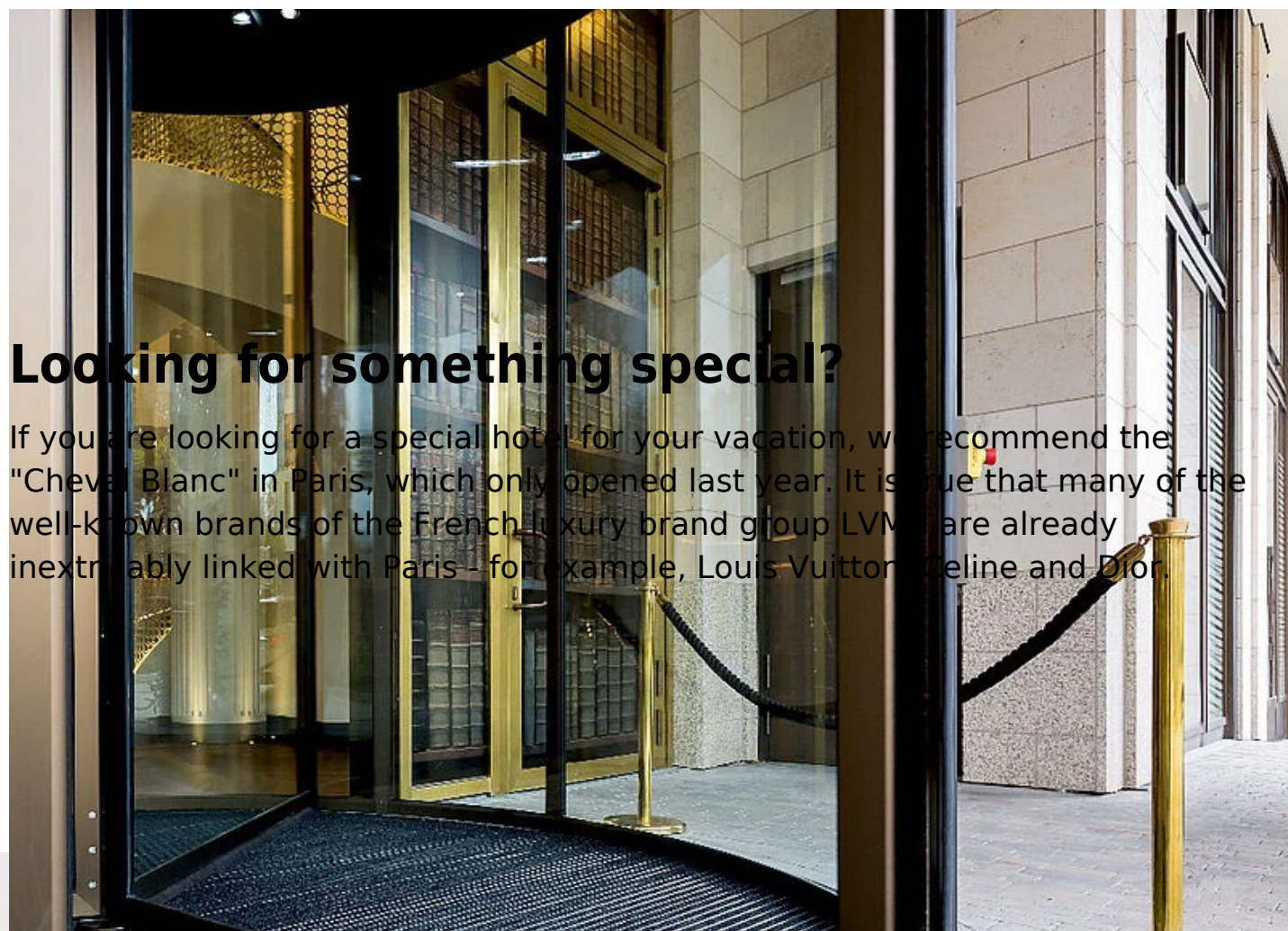


Equally fantastic views of Düsseldorf are offered by the elegant [Hyatt Hotel](#) directly at the Medienhafen. A pedestrian bridge connects the hotel on the water with the young trendy district of the popular Medienhafen and the city. In the bathrooms, accessories from [emco Bad](#) shine and brighten up the start of the day. For breakfast, lunch and dinner, the hotel offers a wide range of gastronomic options.

No cooking, no cleaning - and always a contact person

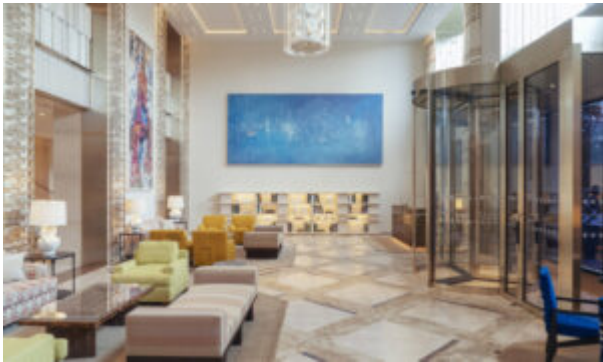
And that, after all, is one of the great advantages of staying in a hotel: you don't have to cook, but can feast on what others prepare at the buffet or à la carte.

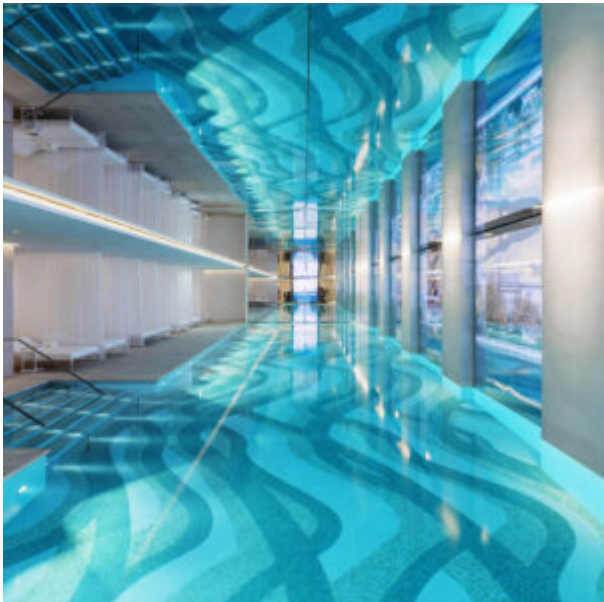
Cocktails are available in the hotel bar - and anyone planning a vacation with children would be well advised to book a hotel with a children's program. If there are problems with the room, pool or food, or if you've suffered a minor injury or need an insider's tip, a hotel complex has a contact person around the clock, as is the case at the [Sofitel Frankfurt](#) - here you can relax in the spa area or enjoy the cultural offerings around the hotel. A dedicated team is on hand to answer guests' questions, and entrance mats from emco ensure cleanliness right from the entrance. The impressive [Galaxy Casino & Hotels](#) in Macau or the [AccorHotels Arena](#) in the French capital Paris are just two of many other tips equipped with emco cleanliness systems.



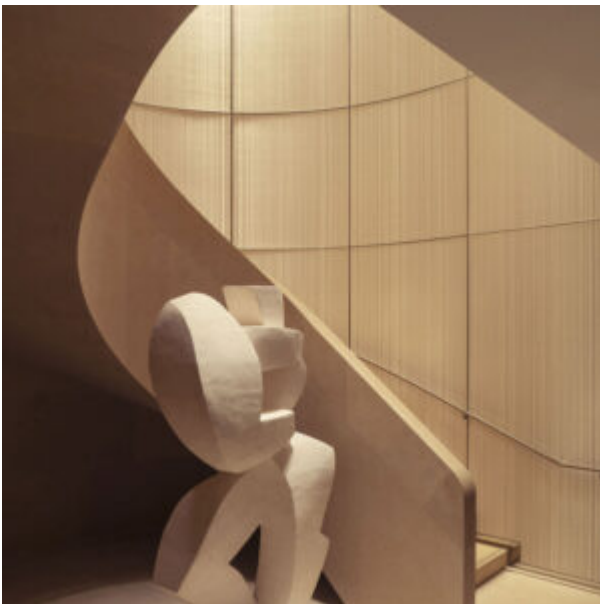
Looking for something special?

If you are looking for a special hotel for your vacation, we recommend the "Cheval Blanc" in Paris, which only opened last year. It is true that many of the well-known brands of the French luxury brand group LVMH are already inextricably linked with Paris - for example, Louis Vuitton, Celine and Dior.







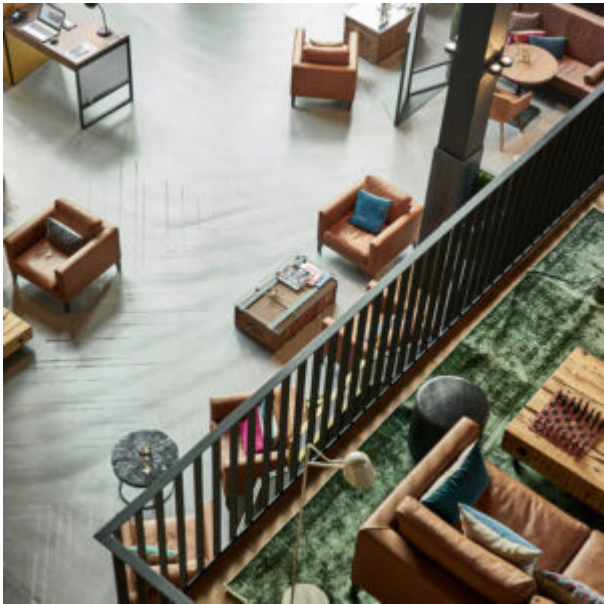


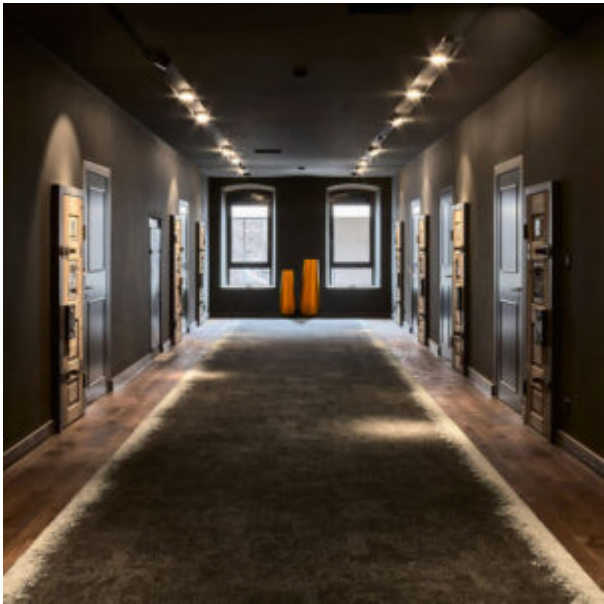
But the company's hotel brand is now represented in the French capital for the first time. Architect Peter Marino has created a magnificent luxury gem in an Art Deco department store from 1928, originally designed by Henri Sauvage. The interior is filled with valuable vintage furniture, for example by Maria Pergay, Charlotte Perriand and Jean Lurçat.

The Hotel Liberty in Offenburg boasts award-winning architecture. Historic prison

buildings now house a modern luxury hotel. The original function of the walls is present everywhere.









The industrial-designed rooms naturally meet all the requirements of a 5-star hotel and surprise with precious details - a feast for design lovers. We wish you a wonderful vacation! And if you are still looking for a worthwhile destination, you will find many more exciting [references](#) from emco here!

[Read More](#)

Category: [Magazine](#)



In educational facilities such as schools, universities and kindergartens, clean-off systems have many different tasks which are specific to the building. In addition to dirt uptake, they reduce walking noise and contribute to a quieter ambience in the midst of hectic activity. The entrance mats should be just as hard-wearing as the indoor floor coverings – it is worth investing here as direct dirt uptake in the entrance area saves on cleaning and maintenance costs. emco was the preferred partner for the Juridicum building in Kiel, primarily for reasons of barrier-free access.

In educational facilities such as schools, universities and kindergartens, clean-off systems have many different tasks which are [specific to the building](#). In addition to dirt uptake, they reduce walking noise and contribute to a quieter ambience in the midst of hectic activity. The entrance mats should be just as hard-wearing as the indoor floor coverings – it is worth investing here as direct dirt uptake in the entrance area saves on cleaning and maintenance costs. emco was the preferred partner for the Juridicum building in Kiel, primarily for reasons of barrier-free access.

The law faculty at the Christian-Albrecht-University of Kiel (CAU) has a history that goes back over 350-years. However, while knowledge has been accumulating, time has been taking its toll on the facilities. A barrier-free renovation was required and emco provided the solution in Kiel with a [tactile guidance system](#). The new faculty building opened in October 2020.



The **Juridicum** is a research and teaching facility and a key element of an extensive scheme to modernise the Kiel campus. The state charged the building management company Gebäudemanagement Schleswig-Holstein AöR (GMSH) with the implementation of this project. The building comprises a compact plinth zone with two interlocking wings above. The foyer, service areas and seminar rooms are located in the plinth while the institute rooms of the faculty are above. Once the building work was complete, 161 staff and 12,000 metres of books were installed over a floor space of 7,200 square metres, on five floors. The service area in the foyer, including a bakery, print shop, ice-cream parlour and cycle shop, adds to the facilities offered on campus. The state-of-the-art Juridicum offers all the best options for working and socialising.



Bild: © GMSH. Fotografin: Birgit Schewe

The low-emission clean off zones provide both **dirt and moisture reduction** and sound absorbing insulation for the 21 metre wide and 91 metre long building. In addition to this, they solve a frequently occurring problem: there is often a gap in the guidance system for the visually impaired in the transition from street to building which can be dangerous.

“When planning this public building, it was also important to make sure it was as safe as possible for everyone. Ensuring the latest measures are in place for people to move safely around a building is becoming an increasingly important consideration for planners and architects. Certified fire behaviour, **low-emission manufacture**, managing walking noise, and cleaning intervals all have a part to play,” explains Tim Lüdrichsen, Head of Building Work at CAU.

The emco Diplomat TLS entrance mats in the Juridicum ensure the typical trip hazards at the transition into a building, such as unexpected edges, a change in floor covering, or insufficiently tactile substrates, are a thing of the past. A guidance system with different heights is integrated into the clean off zone, which can be designed as required. These are easily identified through the soles of the feet or with a cane. The high-contrast colouring provides further assistance, providing safe guidance into the interior of the building. It makes it easier to locate, for example, doors, stairs or lifts, and points out hazards or obstructions:

A further benefit of the [tactile guidance system](#) is that it can be combined in many different ways with existing floor coverings to provide a reliable continuation of the floor guidance systems already in place. The tread surface comprises robust, recessed, weather-proof ribbed carpet strips and rigid aluminium profiles with sound insulation underlay.



[Read More](#)

Category: [Magazine](#)





BARRIER-FREE ACCESS PARAMOUNT IMPORTANCE

15. February 2022

Barrier-free access impacts every aspect of life: places and rooms as well as means of communication. Not having barrier-free access into these areas makes it impossible for all those affected to access cultural and political life as well as work and leisure activities, which can include young and old people with a disability or temporary impairment. Barrier-free access affects us all. Why? Only 4 % of all disabilities are congenital; most are a result of illness or accidents. And, approximately 25 % of people with a severe disability are 75 or older, and a half are between 55 and 75. And the average age is increasing – for all of us. *

Barrier-free access impacts every aspect of life: places and rooms as well as means of communication. Not having barrier-free access into these areas makes it impossible for all those affected to access cultural and political life as well as work and leisure activities, which can include young and old people with a disability or temporary impairment. Barrier-free access affects us all. Why? Only 4 % of all disabilities are congenital; most are a result of illness or accidents. And, approximately 25 % of people with a severe disability are 75 or older, and a half are between 55 and 75. And the average age is increasing – for all of us. *

Barrier-free access means much more than just ramps, wide doorways and low-floor buses. To achieve barrier-free living, buildings and spaces, work places and homes, means of transport and objects, services and leisure facilities must be accessible to everyone without assistance. This includes lifts and ramps as well as easy read forms in simple language, sign language interpreters, and barrier-free access to the digital world. Barrier-free access obviously helps everyone: parents with pushchairs use lifts as well as people with reduced mobility, simple language helps people with learning disabilities as well as those who do not speak or understand the language well.

Building barrier-free access

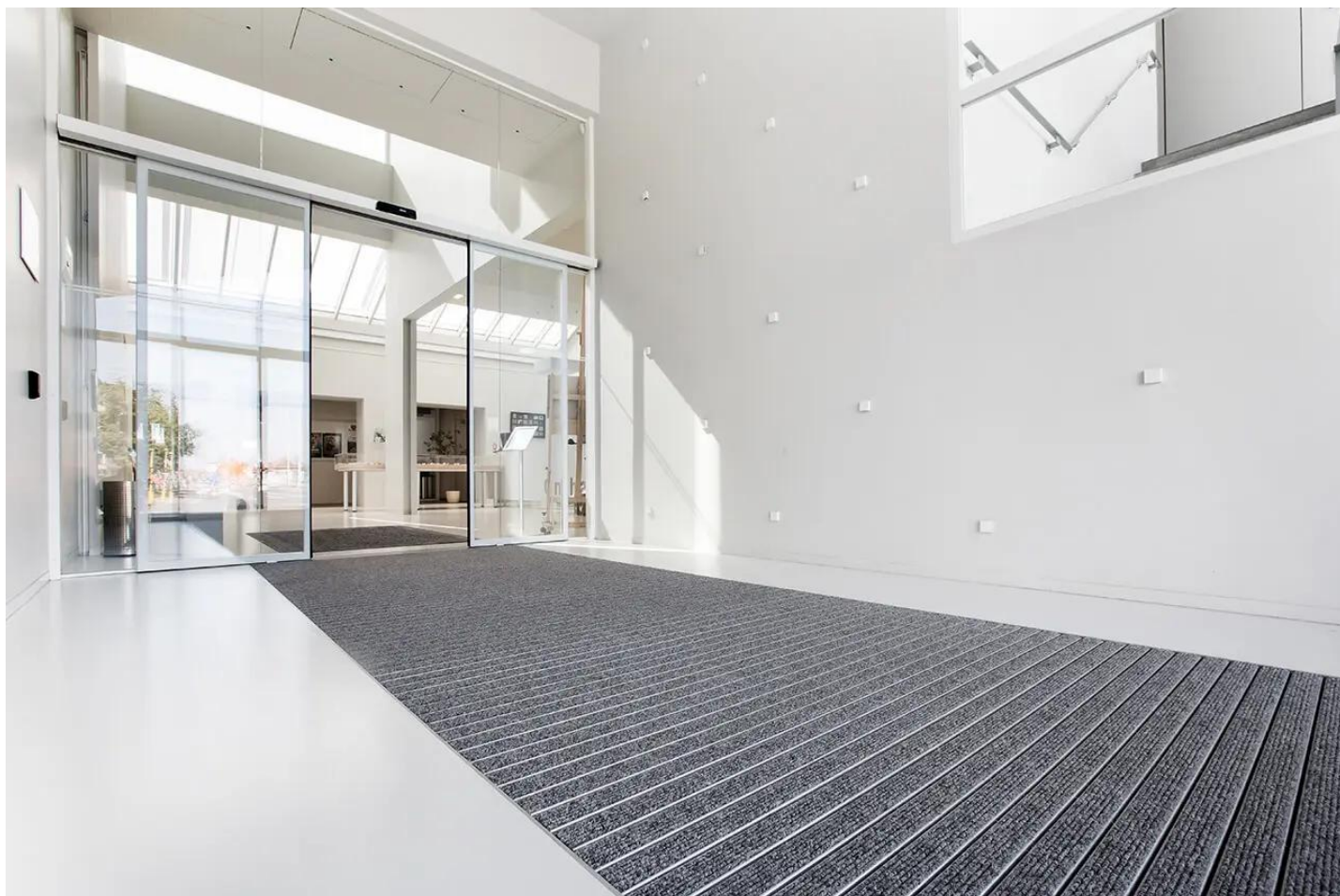
Urbanisation of public spaces also means minimising hazards for everyone. Both the general understanding of modern life and legal provisions are adapting to this and up-to-date measures to ensure people using a building can do so safely are becoming more and more important – and not just for planners and architects. In spite of this, there is still a long way to go to achieve barrier-free access.

Inadequate barrier-free access is clearly visible in our built environment, for example, if a lift is out of order or door bells are located out of reach of wheelchair users. The regulations for building barrier-free access should remedy this. For example, there are DIN standards for stairs and lifts as well as for floor surface indicators, guidance systems, tactile and acoustic warnings. The DIN standard 18040 – Construction of accessible buildings, section 4.3.3 Doors states:

Doors must be clearly discernible, easy to open and close, and safe to pass through.

Floor-level door stops and thresholds are not permissible. If they are essential for technical reasons, they not be any higher than 2 cm.

Cognitive disabilities such as blindness and visual impairment should therefore be taken into consideration during the planning phase – and the entrance mat system must obviously not represent a trip hazard in doorways. Tactile guidance systems can make it significantly easier for blind people and those with a visual impairment to orient themselves when they enter a building. Appropriate guidance systems are already in place in many outdoor areas such as pavements and squares. If a guidance system for the blind is also in place in the indoor areas of a building, the outdoor and indoor guidance systems are often interrupted by the floor mat in the entrance area creating an unnecessary barrier which makes it difficult to find the route again.

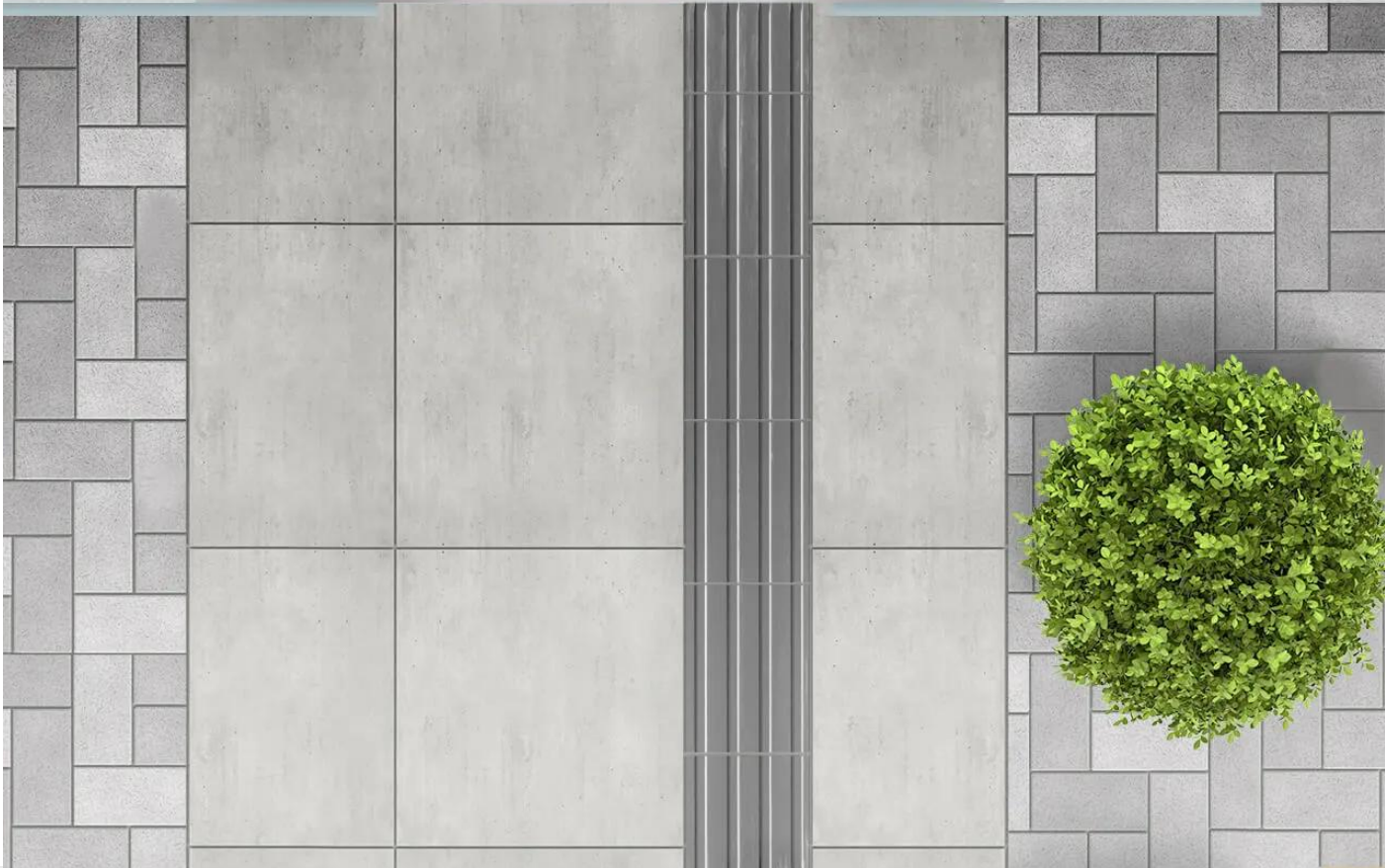
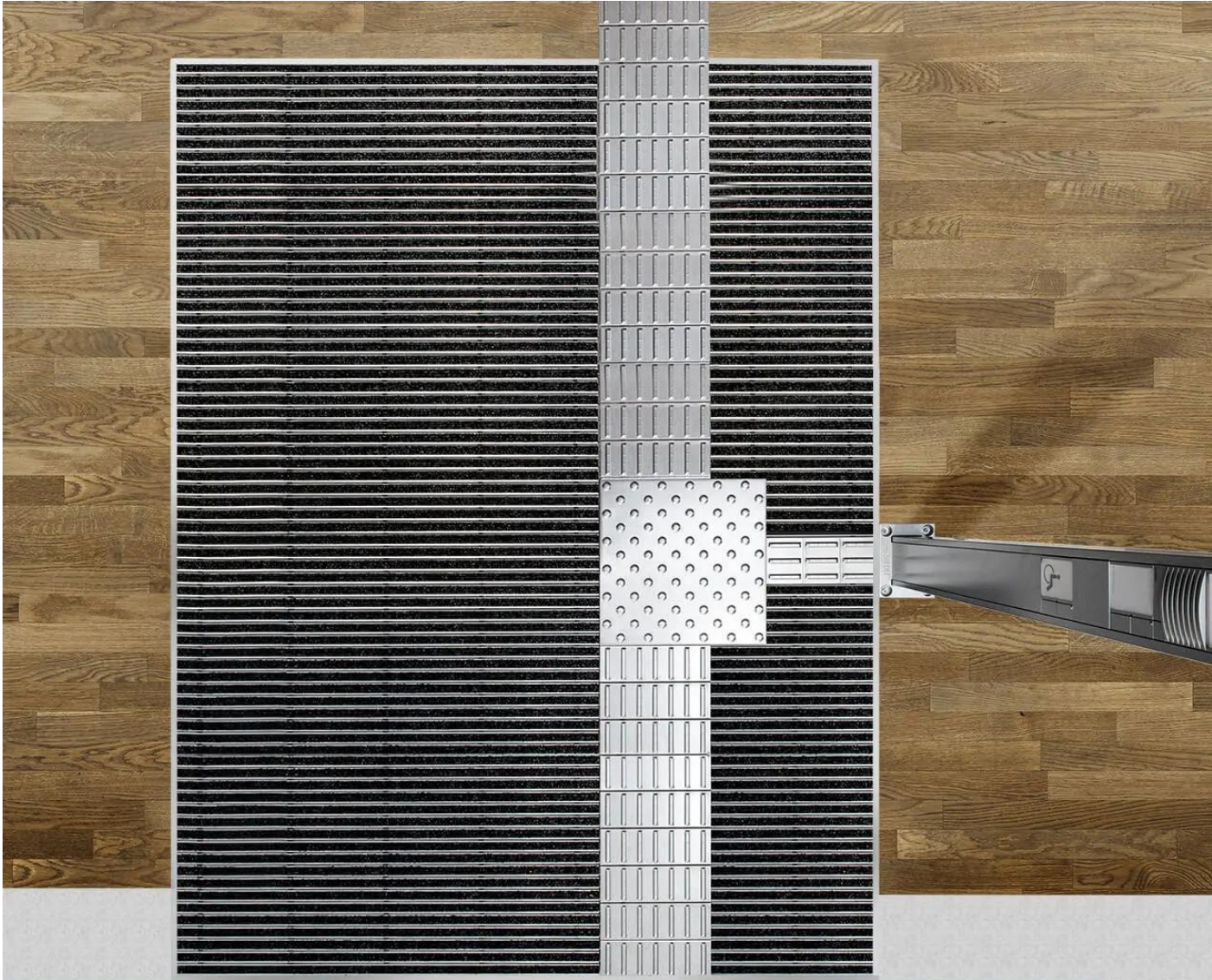


DIN-compliant solution

Together with Hoba Steel, a manufacturer of guidance systems for the blind for indoor and covered outdoor areas and specialist in stainless steel wall and floor concepts, emco bau has developed an [entrance mat](#) with an integral guidance system for the blind. This solution combines the outdoor guidance system with the indoor floor surface indicators. The emco SPIN® SAFE tactile guidance system satisfies the highest functional demands and is also aesthetically pleasing as it offers a consistent optical appearance made from stainless steel as soon as the entrance mat is accessed. The guidance system complies with all the requirements to DIN 32984 Tactile walking surface indicators in public areas, which specifies the requirements for floor surface indicators and other guidance elements. Its aim is to optimise the safety and mobility of blind and visually impaired people in public spaces. The standard therefore applies to areas to which the public has access. To this end, it defines the shape and dimensions of the profiles, for example, and the required light/dark contrast of the floor surface indicators and many other aspects.

emco tactile guidance system

emco SPIN® SAFE, with its perfect combination of cleaning functionality, tactile floor-level information and effective brightness contrast, complies with the requirements and is already being used in entrance areas in hospitals, banks, office buildings and rehabilitation centres. This [tactile guidance system](#) reduces barriers for blind people and the visually impaired in these areas and can be integrated into many emco entrance mats. emco SPIN® SAFE allows blind and partially sighted people to easily and clearly detect directions and changes in direction with their feet or canes. However, the robust stainless steel elements offer even more benefits: in addition to being tactile floor surface indicators, they produce a clear change in the auditory response when using a cane.



Other barrier-free solutions

The emco TLS tactile guidance system for the blind is a technical alternative which complies with the light/dark contrast requirements of international standards. Lateral profiles support both the tactile guidance and the system's exceptional cleaning capacity. Thanks to the slightly different heights, they can be detected when walking with the soles of the feet and with the aid of a cane. This guidance system for the blind enables blind and visually impaired people to find doors, stairs, lifts, etc. and provides orientation in larger areas. The guidance system also highlights obstructions and hazards. The floor guidance system also make it easier for people without any visual impairment to orient themselves. The material offers high levels of contrast for people with limited vision and can therefore be more easily distinguished from the usual entrance mat.

The emco offer for the blind and visually impaired is rounded off by the emco MAXIMUS® ASSISTANCE clean off mat with its integral tactile floor guidance system. It can be installed in different ways and makes orientation and location of destinations easier in entrance areas and buildings. It can be also used as a reliable continuation of existing floor guidance systems – for example as a transition from the pavement to the building into the interior. What's more, the guidance system, which can be integrated into the mat however you choose, provides floor information at different heights that can be felt both with the sole of the foot and with a cane. High-contrast colouring offers additional assistance. emco MAXIMUS® ASSISTANCE is particularly suitable for retrofitting.

[Read More](#)

Category: [Magazine](#)

PRESS



CLEAN-OFF FLOOR TILING IS TRENDING

11. July 2023

This modular solution from emco Bautechnik is easy to install and offers many design options

Lingen, 10 July 2023 - With clean-off floor tiles in three quality profiles, emco Bautechnik offers its customers particularly easy-to-use alternatives for designing entrance areas creatively and sustainably.

'emco clean-off floor tiles are efficient and sustainable. Compared with roll-out materials, they are easier to install and often even made of recycled fabric,' says Marcus DeNoni, Regional Sales Manager at emco Bautechnik.

Convenient format and space-saving delivery

With the arrival of autumn, more and more people need to clean off their shoes thoroughly when they walk into a building. The clean-off floor covering systems from emco Bautechnik are particularly effective at absorbing moisture and also brush dirt off perfectly. Thanks to the many design options available, they are often even eye-catching decoration.

Among these systems, emco's modular clean-off floor tiles are growing more and more prominent. Marcus DeNoni shares a key reason for this: 'The convenient format makes it significantly more straightforward to install them and deliver them in space-saving packages.' Another handy factor is that individual tiles can be easily replaced later on. On top of that, clean-off floor tiles can be combined perfectly with other floor coverings.

The 50 x 50 centimetre tiles are available in 3 quality profiles and 16 selected colours. The emco SCRATCH2 and emco CONFORM quality profiles are especially

sustainable, with an outer material consisting solely of recycled ECONYL fabric. Customers benefit from the leap in sustainability without having to compromise on the product's advantages.

Three quality profiles for countless design ideas

All three quality profiles offer a large amount of creative potential when designing entrance areas. The emco SCRATCH2 clean-off floor tiles brush off large particles of dirt fully thanks to a new material composition and absorb moisture optimally. Most of all, however, they impress with their striking appearance. They can be installed in a classic way, or in individual arrangements or imaginative styles.

When installing emco CONFORM or emco INNOVA clean-off floor tiles, customers can choose a combination of light and dark tiles. Exciting visual effects can be achieved by aligning the direction of the carpet piles in a deliberate way. The innovative, high-grade emco INNOVA tiles adapt to nearly all design or technical requirements, and also improve the acoustics in the space noticeably. Moreover, the exclusive velour finish on emco CONFORM is tailored ideally to the appearance of wooden and designer floors.

```
<?xml
versio
n="1.
0"
encodi
ng="u
tf-8"?
>
```

Press release (zip)

[Read More](#)

Category: [Press](#)



DIRT COLLECTION WELLS AND TACTILE GUIDANCE SYSTEMS REFINE INTERIOR DESIGN

Lingen, 9 May 2023 - emco Bautechnik GmbH returned very satisfied from the BAU 2023 trade fair in Munich. The Lingen-based specialist in clean-off floor covering systems had a stand presenting a number of revised highlights from its product range, including the SPIN® SAFE tactile guidance system as well as dirt collection wells.

'We used the size of our display to put a special emphasis on a number of our products for special applications and show how varied the design options are with emco clean-off floor covering systems,' said Marcus de Noni, Regional Sales Manager at emco, recounting the successful BAU 2023 trade fair in April.

A focus on design variety

After a break of more than four years, BAU returned to Trade Fair Center Messe München as the world's leading trade fair for architecture, materials and systems. The organisers were delighted to have more exhibitors than in 2019 and nearly just as many visitors.

emco Bau, based in the town of Lingen, was also pleased by how the fair went. Its large display, which was exposed on three sides, was very busy at all times and saw lots of new contacts being met.

The display focused on the large number of special solutions that are possible using emco's products. For instance, emco entrance mats and clean-off floor covering systems have coloured anodised aluminium bars and frames that make them an attractive design element. There were models recessed into the floor to show how much coloured aluminium frames enhance emco inserts.

SPIN SAFE[®] now also for high-performance inserts

The design variety at emco also extends to products for special applications.

SPIN[®] SAFE, for example, was met with great interest by architects and construction planners. emco now also offers its tactile guidance system with emco Premium high-performance inserts, emco DIPLOMAT entrance mats for normal to heavy loads and emco MARSCHALL for extreme loads as well as for all three entrance mat heights.

Clean-off floor covering systems with SPIN SAFE[®] close the gap for guidance systems for the blind and vision-impaired from outside to inside. Entrance mat frames in three different heights provide the blind with auditory information through their walking stick to guide the way. People who are strongly vision-impaired are also given orientation through strong contrasts.

Flexible installation options for dirt collection wells

emco also offers designers a great deal of freedom with dirt collection wells for increased dirt capture and excellent water run-off. They can be used with all inserts and MARSCHALL bars and frames from the emco range. There was a podium with wells in various heights to demonstrate all the construction possibilities. The display also showed how different well types and water overflows can be combined with each other.

The dirt collection wells do not have any screws on the bottom, which makes them particularly easy to install. Reinforced with a galvanised steel grate, they are suitable for heavy loads and vehicles can even drive on them.

Product sustainability passports for three emco inserts

The commitment to sustainability at emco Bau received particular praise. emco was one of the first manufacturers of floor coverings and entrance mats to successfully complete product tests based on the BREEAM, LEED and DGNB standards at the TFI – Institute for Floor Systems in Aachen, Germany. Dr Jacqueline Lemm and Theresa Rüdiger presented Managing Director Jörg Harbecke with corresponding product passports for sustainability. The Care and Maximus insert types for Premium entrance mats as well as the rough-fibre ribbed carpet for Original entrance mats were inspected by the TFI. Further

examinations are under way.

Emco-BAU23-Exponate-3825.jpg

This podium showed the design options available with emco's dirt collection wells. (Image: emco Bautechnik GmbH)

Emco-BAU23-Front-3865.jpg

Appealing design highlights can be made with coloured anodised aluminium bars and frames. emco Bau presented a range of examples on the floor of its display. (Image: emco Bautechnik GmbH)

Emco-BAU23-GesEckL-3841.jpg

Emco-BAU23-GesEckR-3885.jpg

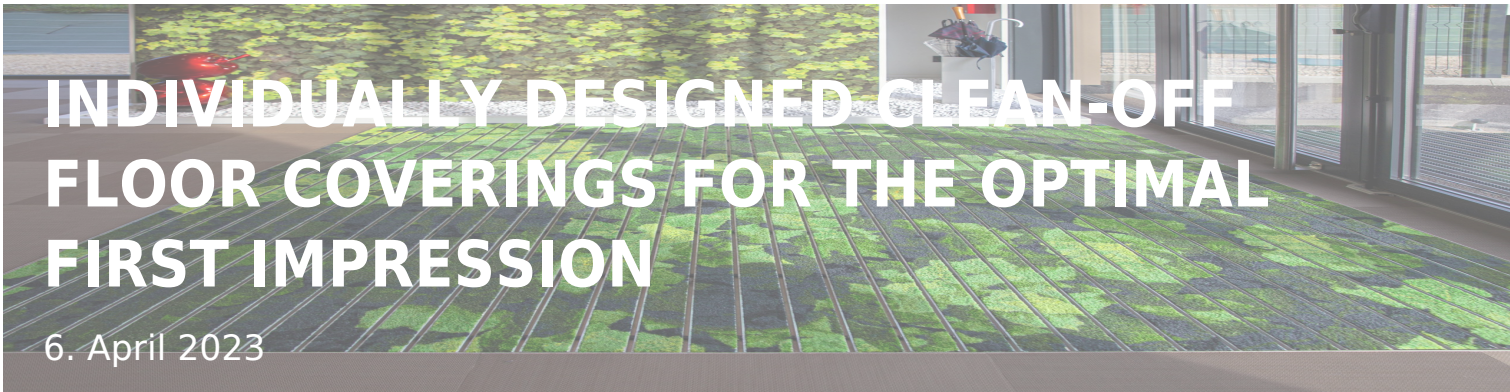
emco put a focus on the theme of design variety at its spacious display at BAU 2023. (Image: emco Bautechnik GmbH)

<?xml
versio
n="1.
0"
encodi
ng="u
tf-8"?
>

Press release (zip)

[Read More](#)

Category: [Press](#), [Uncategorized](#)



INDIVIDUALLY DESIGNED CLEAN-OFF FLOOR COVERINGS FOR THE OPTIMAL FIRST IMPRESSION

6. April 2023

A successful EuroShop 2023 for emco Bautechnik

Lingen/Düsseldorf, 5 April 2023 - emco Bautechnik GmbH returned from EuroShop 2023 in Düsseldorf very satisfied. The Lingen-based specialist in clean-off floor covering systems amazed the trade fair guests with the individual design options offered by emco MAXIMUS® IMAGE.

'The first impression is often crucial. That is why architects, designers and planners integrate our custom-printable MAXIMUS® IMAGE inserts into their design concepts. They help visitors to feel at ease right when they enter the building,' explained Carsten Niehoff, Head of Architecture & Global Accounts at emco Bautechnik GmbH.

Clean-off floor covering system with truly eye-catching leaf motifs

More than 80,000 international trade visitors from wholesale, retail, architecture, interior design, shopfitting and many other industries visited the world's leading trade for visual merchandising from 26 February to 2 March 2023. At the emco Bautechnik GmbH display, they saw how times have long changed since boring, grey dust control mats were a necessary evil at shop doors. A clean-off floor covering system printed with leaf motifs proved to be truly eye-catching. It was as if the visitors felt invited to step on it, as the design extended through to the rear wall.

Impressive print quality thanks to Chromojet technology

'We print each floor covering entirely individually. Almost any logos, images or

text can be realised without a problem. We can simultaneously print up to 16 colours out of our standard colour palette of 45 colours and, optionally, special colours as well,' said Carsten Niehoff, describing the characteristics of the emco MAXIMUS® IMAGE product. Chromojet printing technology is used to apply characters, type and graphic elements – and even contours, shadows and gradients – with impressive precision to the inserts on the aluminium frame or to full-surface clean-off floor covering.

'Anyone who is planning a comprehensive, harmonious interior design and uses emco MAXIMUS® IMAGE will automatically design the three-zone cleaning system that we recommend, too,' added Carsten Niehoff. The premium tufted velour material meets the highest demands for appearance, durability and safety – while also ensuring the best results for trapping dirt and moisture.

No limits to the imagination

There are next to no limits to the imagination when designing with emco MAXIMUS® IMAGE. For instance, the design on display at the trade fair has already been implemented in practice by a customer. In addition to printing on the inserts for the clean-off floor coverings, there are numerous other design options such as extra-wide frames, special shapes and inox-grade stainless steel frames with lasered logos or type.

If desired, emco specialists can support their customers with on-site advice for planning the design and choosing the right products. The right points of contact are provided at <https://www.emco-bau.com/en/architects/advice-and-service/>.

Maximus-Image.JPG

Consistent visual identity for the entrance area: one emco Bautechnik GmbH customer has already implemented the MAXIMUS® IMAGE design options in practice. (Image: emco Bautechnik GmbH)

emco EuroShop 2023.JPG

The emco display at EuroShop 2023 was truly eye-catching. (Image: emco Bautechnik GmbH)

MAXIMUS IMAGE Designvielfalt.JPG

With MAXIMUS® IMAGE inserts, there are next to no limits to the imagination when designing clean-off floor covering systems. (Image: emco Bautechnik GmbH)

<?xml

versio
n="1.
0"
encodi
ng="u
tf-8"?
>

Press release (zip)

[Read More](#)

Category: [Press](#)



Lingen, 09. March 2022 – emco Bautechnik GmbH has provided a wide selection of swimming pool grates for public and private installations for over fifty years. In this interview, emco Key Account Manager Klaus Meiners talks about trends and applications for emco products.

emco is the market leader for swimming pool grates in Germany and several other European countries.

So what sets its products apart from the rest?

“In short: high quality combined with custom production and a comprehensive advice and service network. emco swimming pool grates are renowned for their absolute safety and hygiene, they also feel pleasant to walk on, and their design blends harmoniously into the overall effect. We can supply our swimming pool grates with practically any grating pattern, and we offer flexible production to order. Other advantages are related to the selection and processing of the material, which give it great stability, strength and durability. Our choice of high-quality plastics as profile materials makes emco swimming pool grates fully recyclable.”

What are the current trends?

“We believe that environmental and cost factors influence our customers’ decisions. Budgets are tight for public swimming pool projects. As well as environmental considerations, the amount of money needed to invest in new plastic grating for the pool before the next full renovation also makes a difference financially.

The opposite is true in domestic swimming pool installations: for some time now, the cocooning trend has meant that people are increasingly investing in their own homes. There is a strong desire for individuality and high design standards in this segment.”

How do you support customers?

“We guide them through all the planning and implementation steps, from a detailed initial consultation to installing the grating. Our trained employees advise customers on site with selection and implementation. Particular focuses include measuring dimensions for production, and installing and fine-tuning on site to ensure the best possible fit for custom contours. Our service team is available all over Europe.”

How high are aesthetic requirements?

“Extremely high, but we never lose sight of the functionality of the grates. We have developed the 723 DESIGN for private swimming pool projects, which allows easier visual integration of the grate in the overall architecture. It has won four design and innovation awards: Red Dot Award, German Design Award, Golden Wave, and the French Laureat innovation award. Cathrin Schultz (Dipl.-Ing.), a member of the Association of German Architects (BDA), commented, “An aesthetically pleasing product that integrates harmoniously in the pool border. We are very proud of this.”

```
<?xml
versio
n="1.
0"
encodi
ng="u
tf-8"?
>
```

Press release (zip)

[Read More](#)

Category: [Press](#)



EMCO DIRT COLLECTION WELLS MAXIMUM DESIGN SCOPE AND EFFICIENT DRAINAGE

25. January 2022

Lingen, 25. Januar 2022 – Besonders in stark frequentierten Eingängen sammeln sich Schmutz und Nässe, die nicht ins Gebäudeinnere getragen werden sollten. Mit sogenannten Dirt collection wells können große Mengen Straßenschmutz zusätzlich aufgenommen, Regen und Schnee optimal abgeleitet und so die nachgelagerten Böden im Objekt geschützt werden. Die Produkte von emco Bautechnik GmbH versprechen maximale Gestaltungsfreiheit für architektonische Ansprüche und eine einfache Realisierung mit vielfältigen Möglichkeiten.

Dirt and moisture accumulate particularly quickly in high-footfall entrance areas and it is important to make sure these are not carried inside the building. Dirt collection wells can also capture large amounts of street dirt and provide optimum drainage for rain and snow to protect the floors in the building. emco Bautechnik GmbH's products offer maximum design scope for architectural requirements and allow easy, flexible installation.

“The combination of very hard-wearing entrance mats and dirt collection wells with integrated drainage ensures effective cleaning and reduces the frequency of deep cleans. This ultimately saves costs and preserves the value of the floors inside the building,” explains Carsten Niehoff, Head of Architecture & Global Accounts at emco Bautechnik GmbH. Extensive design scope and custom shapes make it possible to adapt emco dirt collection wells to specific features on site.

Easy installation, outstanding durability

“We have revised and improved our product design. Previously, the support surfaces were screwed in place, with the screws inserted under the well in the plaster. The new smooth well base allows easier and faster installation on an existing floor,” continues Niehoff.

Dirt collection wells are also available in a heavy-duty version, for example, for situations where forklifts, hand trucks or shopping trolleys drive over them. The

new water overflow connections now allow multiple wells to be connected to each other with a single drain. The length and diameter of the pipe (DN 50/DN 70/DN 100) for connection to the waste water system can be specified for much easier installation.

Extensive design options

Depending on the size and shape, an emco dirt collection well system can consist of a single-part well or several wells of variable width and depth and have a flexible height. The modular construction offers a great deal of scope for design, as custom shapes such as curves or slopes are easy to implement. The aluminium is welded with waterproof seams and is completely smooth on the inside for easy cleaning. The dirt collection wells can be supplied in stainless steel upon request. The drain device consists of a flat, rustproof stainless steel screen and a lower section for connection to the drainage system – in either aluminium or stainless steel, depending on the well material.

For more information about emco dirt wells, visit: <https://bit.ly/3laTSi2>

On-site advice for architects

emco's specialists offer expert services to give architects reliable data for their designs. You can find an appropriate architectural advisor for your needs [here!](#)

```
<?xml
versio
n="1.
0"
encodi
ng="u
tf-8"?
>
```

Press release (zip)

[Read More](#)

Category: [Press](#)



Lingen/Gräfenhainichen, 23. November 2021 – Die emco Bautechnik GmbH konnte bei Werksverlagerung der Carpet matsproduktion von Lingen nach Sachsen-Anhalt fast alle Arbeitsplätze erhalten. Grund für die Veränderung ist eine wirtschaftliche Neuorganisation des Geschäftsfeldes. Die Produktion bleibt somit weiterhin in Deutschland.

Lingen/Gräfenhainichen, 23 November 2021 – Almost all jobs were retained by emco Bautechnik GmbH during the relocation of its carpet mat production from Lingen to Saxony-Anhalt. The relocation took place as part of the restructuring of the division. Production will therefore remain in Germany.

“Continuing to produce under the “Made in Germany” banner was very important to us. We had to deal with a few challenges during the move, but it’s all systems go now,” explained Rüdiger von Scheven, Managing Director and Factory Manager of emco Tex. emco has invested a seven-figure sum at the Gräfenhainichen site. A whole range of structural alterations have been carried out to maintain the traditional high-quality production. The emco Tex GmbH carpet mat production site is working with an existing team that has been retrained for this new activity. Employees in Lingen were given the opportunity to transfer to other areas of the emco Group.

```
<?xml
versio
n="1.
0"
encodi
ng="u
tf-8"?
>
```


Press release (zip)

[Read More](#)

Category: [Press](#)



Lingen, 7 September 2021 For the construction of the new Law Faculty building at Kiel University (CAU), emco – the leading manufacturer of clean-off systems – has addressed the issue of accessibility for people with visual impairments with a tactile guidance system.

Clean-off zones in universities are designed to reduce dirt and moisture. They dampen the sound of footsteps and help create a more peaceful atmosphere in areas of intense activity. Entrance mats need to be just as hard-wearing as the floor coverings used in high-footfall areas. However, the transition from street to building often represents a gap in guidance systems for the visually impaired, and this can result in trip hazards.

“Blind and partially sighted people rely on support. Guidance systems have become standard in public spaces. Our systems help people find their way and also keep the building clean,” explains Dieter Hamann, Architectural Advisor at emco.

Avoiding trip hazards

In the Juridicum building, the emco Diplomat TLS entrance mat eliminates typical trip hazards in outdoor-indoor transition areas – such as unexpected edges, changes in floor covering or surfaces with minimal tactile properties. A guidance system is integrated into the flexibly designed clean-off zone with different heights, which can be felt clearly with either the sole of the foot or a cane. Contrasting colours provide additional assistance and guide visitors safely into the building. The system makes it easier to locate doors, stairs or lifts, for example, and draws attention to potential hazards and obstacles.

Another advantage: the tactile guidance system can be flexibly combined with existing floor surfaces and used to extend floor guidance systems already in place.

The tread surface consists of recessed, durable and weatherproof ribbed carpet strips, and the profiles are made from torsion-resistant aluminium with a sound-insulating underlay.

Entrance mats in educational facilities

"The planning process for this public building also considered solutions to minimise hazards for all users. Ensuring modern and safe movement for people in a building is becoming an increasingly important aim for planners and architects. Certified fire performance, low-emission production, acoustic properties and cleaning intervals also need to be considered," explains Tim Lüdrichsen, responsible for construction programmes at Kiel University.

<?xml
versio
n="1.
0"
encodi
ng="u
tf-8"?
>

Press release (zip)

[Read More](#)

Category: [Press](#)



ARCHITECTURE AND ACCESSIBILITY IN HARMONY

27. July 2021

Lingen, 27 July 2021 Cleanliness in buildings starts with emco – the leading manufacturer of clean-off systems designed to reduce dirt and moisture. But safety and accessibility are important considerations too when planning a new construction. What exactly does “accessibility” mean in the world of architecture and building? And why is “universal design” so important? – emco Bautechnik discussed these issues with Dirk Michalski (Dipl.-Ing), an architect and expert in accessible planning and building.

emco interview with architect Dirk Michalski

Mr Michalski, what does the term “universal design” actually mean?

For me, the concept of universal design encompasses the design and accessibility of the building. The process starts with the development of an attractive universal design for the largest possible user group, which is then implemented by the various parties involved. The path to the building and access points must be clearly identifiable to allow easy location of features such as doors and entrances for as many people as possible.

What does “accessible” actually mean?

First and foremost, accessible means the elimination of barriers. In other words, I must not design or build any elements that could represent obstacles for some people. Let's take a simple example: access that requires the use of stairs would not be suitable for a wheelchair user. The stairs would be a barrier. Whereas a barrier for blind people would be a large open space in front of a building with no means of orientation towards the entrance. A feature that assists wheelchair users could potentially represent an obstacle for blind people. We need to weigh up different universal design approaches at the concept stage: What is the best option and one that everyone can use? Are there any mutually exclusive aspects and how can I find the best solution? My experiences with emco entrance mats have been positive so far.

Cost is an important issue for building owners. Does accessible design inevitably mean more expensive?

Any discussion of costs and accessibility must focus above all on comfort and convenience. The starting point is to consider the question: Do we regard accessibility as an "optional extra" in the building design? Or as something that would actually provide greater convenience for many people? Let's take the example of a lift. A lift is, of course, a relatively cost-intensive item which therefore impacts the budget. But if I am connecting several floors and include a lift as well as stairs, I don't find the term "extra cost" appropriate. After all, a lift will allow far easier use of the building for people with pushchairs or carrying suitcases, as well as for people with reduced mobility using a wheelchair or walking frame. Consequently, the assumption that accessibility is an additional expense in a construction project is not appropriate either. Accessibility has become the norm in this technically demanding era and in a world that places ever-greater emphasis on comfort. Of course, a guidance system for blind people involves additional effort – depending on the nature of the accessibility issue – but skilful planning plays an important role. Concepts that I consider from the start of the process and incorporate in the design and planning can be implemented more easily and aesthetically. This basically describes the process of universal design.

Where do you perceive the greatest misunderstandings and omissions in accessible construction?

The biggest problem arises in situations where accessibility is not considered right at the start, which then leads to questions later when the building is in use as to why certain areas are possibly not barrier-free. This is, of course, annoying and can ultimately have relatively high cost implications.

How can we raise awareness of this issue to ensure that accessibility is systematically considered in building projects?

The state of North Rhine-Westphalia introduced a regulatory accessibility concept for special and public buildings on 1 January 2020. This is a functional tool that sows the seed of universal design in all parties involved. This sapling can then take root and grow over time. In North Rhine-Westphalia, this aspect must now be included in the building

application, as a building inspection template with comprehensive planning and text details.

Let's move on to the entrance area. What is the situation with regard to entrance mats?

The entrance is a special area in a building that needs to meet several requirements. Most importantly, it needs to be easy to locate and use. And this includes from different perspectives. Let's take the example of a blind person and a person using a walking frame. The latter needs to lean on the walking frame and therefore has very little freedom of action. If we assume the door opens automatically, this at least eliminates the need for physical force, which makes things considerably easier. We also need to consider conflicting aims, for example, the blind person will need tactile guidance. A completely smooth and even surface will provide no assistance whatsoever to this person. They need to know that they have arrived at an entrance or reached their destination. The only means of conveying this is through the floor texture. For example, if I step from a paved surface onto an entrance mat, I feel a slight difference in sensation - one material is slightly softer, the other relatively hard. The entrance mat also needs to cater to aspects such as drainage and cleaning, to stop dirt and water from the external environment being carried into the building. If this mat can then also be used easily by someone with a walking frame, I have found a good solution for both groups of people. More and more good solutions are being developed - for example, at emco - but the sheer size of our country means there is still a lot of catching up to be done.

You yourself have been a wheelchair user since an accident - what particularly annoys or pleases you in terms of accessible architecture?

I am always delighted to find aesthetic, high-quality, accessible solutions. Unfortunately, these are rare. But I'm also happy when I find simple solutions being used. I have come across this quite often in other countries. For example, at ancient sites or in older buildings which are not level due to their condition. Simple and straightforward solutions can be used in these scenarios to create barrier-free access, for example, ramps or bridges. Simple solutions are often implemented in other countries, on the one hand, because not as much money is available, and on the other, because regulations are not as extensive as they are here, where some aspects are rather over-regulated. Unfortunately,

extensive regulations in Germany can be a barrier to some good solutions – particularly in the area of historical monuments. What do I find annoying? Thoughtlessness. When I find things that could have been done much better using very simple solutions.

About Dirk Michalski

- Qualified engineer, *architect and expert in accessible planning and construction.*
- Member of the DIN Standards Committee for accessible construction of the DIN Institut e.V. in Berlin for the standards DIN 18040 - 1,2,3
- Member of the German Bundesverband Deutscher Sachverständiger und Fachgutachter (BDSF - Federal Association of German Experts and Technical Consultants)
- Curator of the IDM Foundation
- Member of EDAD Design für Alle – Deutschland e.V.
- DIN CERTCO certified expert planner for construction of accessible buildings – DIN 18040 - 1,2,3
- Expert in the areas of building and living
- Member of the Chamber of Architects of North Rhine-Westphalia

For more information, visit www.barriere-frei-bauen.de

About emco Bautechnik GmbH

emco Bautechnik GmbH has been developing and manufacturing premium-quality customisable clean-off systems for over 60 years to the highest safety standards and is the market leader in Germany and the leading provider worldwide by revenue. Besides entrance mat systems, clean-off coverings and carpet mats, the product range also includes grates for swimming pools and sanitary facilities. A wide variety of designs and components, combined with outstanding support and comprehensive services, enable us to deliver sophisticated architectural solutions, no matter what the requirements. The company is a division of the emco Group in Lingen.

For more information, visit www.emco-bau.com/en/

```
<?xml  
versio  
n="1.  
0"  
encodi  
ng="u  
tf-8"?  
>
```

Press release (zip)

[Read More](#)

Category: [Press](#)



NEW TECHNOLOGY AT EMCO: HYDROTX ABSORBS THREE TIMES MORE MOISTURE

11. May 2021

Lingen, 11 May 2021 – For its Royal series from the current “2024” clean-off collection, emco Bautechnik GmbH is using a brand-new nylon pile construction: the HydroTX technology absorbs three times more moisture in the first steps. This increased moisture absorption reduces cleaning frequency for the clean-off zone, quite simply because less moisture is being brought in.

In rainy weather, footprints from wet shoes on the floor behind mats can often create an uncared for impression in entrance areas. The special pile construction of the Royal mat is designed to effectively draw out moisture trapped in the grooves of footwear soles.

“The HydroTX technology uses a special textile construction. Its exact composition is a trade secret. However, we can reveal that it is a combination of specific fibres and yarns that promote rapid moisture absorption and are extremely resistant to wear. This combination of properties makes them ideal for use in our mats,” explains Marcus De Noni from emco Bautechnik. This is a particular advantage on smaller surfaces as a mat with HydroTX absorbs a great deal of moisture within just a few steps.

emco is incorporating the technology in products such as the Royal series: a special high-traffic clean-off solution with extremely high moisture absorption properties to keep entrance areas looking their best and improve safety.

Scientific and practical research

Researchers from the Saxion University of Applied Sciences investigated how water is transferred from a shoe sole to a textile layer. The laboratory measurement method was validated in practice by a visual assessment of various everyday scenarios. Many people were observed walking with wet shoe soles over different mat types and the following interior floor surfaces. The researchers then applied their findings and recommendations to the development of new materials. The main focus was kinetic absorption properties: absorbing a lot of moisture from a shoe sole as quickly as possible. The result is HydroTX.

```
<?xml
versio
n="1.
0"
encodi
ng="u
tf-8"?
>
```

Press release (zip)

[Read More](#)

Category: [Press](#)



Lingen, 23. February 2021 - The new emco IMAGE ECO carpet mats are made using yarn from regenerated nylon waste. It comes from the ECONYL® Regeneration System Project by the Aquafil Group, who developed the yarn in a highly innovative, industrial research and innovation process. With this close collaboration, the Lingen company is sending a clear signal about sustainably reducing the impact on the environment.

Up to 85 percent savings in energy are possible with this environmentally-friendly yarn production process. We are delighted to be using this valuable regenerated material which is not only kind to our ecosystem, but also provides outstanding properties for our carpet mats", says Key Account Manager, Markus Hummeldorf.

The principle behind the Öko-Tex-certified yarn is particularly sustainable: A variety of nylon waste, such as fishing nets that can no longer be used, is collected, regenerated and processed into polymers, in other words new yarns. emco then uses these to produce its carpet mats. The ingenious twist: This process can be repeated endlessly. This eliminates the need for many upstream production steps and saves thousands of tonnes of crude oil and CO₂ emissions.

In addition to the sustainability benefit, the Econyl® regenerated nylon has precisely the same properties as a newly manufactured nylon yarn: It has a high resolution, delicate printed appearance, rich, strong colours and can be washed at up to 60 degrees using industrial facilities. It is colour-fast, easy to clean and suitable for custom printing.

"By using this yarn, we are taking an effective step towards climate change and reducing waste, as well as water and electricity consumption", adds Markus Hummeldorf.

The IMAGE Eco with Econyl® carpet mat range is available in all colours, with custom overprinting and can be cut to special shapes.

```
<?xml  
versio  
n="1.  
0"  
encodi  
ng="u  
tf-8"?  
>
```

Press release (zip)

[Read More](#)

Category: [Press](#)



Lingen, 26. November 2020 –The ARCHITECTS' DARLING® Award is the result of the largest industry survey in Germany conducted via Heinz.de of the critical opinions of the construction industry's primary decision makers: architects and planners. emco Bautechnik has emerged as a gold winner for entrance mats and clean-off zones once again for the fourth time in a row.

The findings of the ARCHITECTS' DARLING® survey, in which 1900 architects and planners participated, speak for themselves. They highlight the industry favourites and those companies receive the ARCHITECTS' DARLING® award. 25 product areas were reviewed this year, from floor coverings to technical products. The winners were initially announced on 16 November 2020 at an online event.

"It is an honour to have been awarded gold by architects and planners four times in a row. This shows that our products work well in practice and are highly regarded. It doesn't get any better than that", enthuses Carsten Niehoff, Head of Architecture & Global Accounts at emco.

```
<?xml
versio
n="1.
0"
encodi
ng="u
tf-8"?
>
```

Press release (zip)

[Read More](#)

Category: [Press](#)



THE SMART WAY TO COLLECT AND DIVERT DIRT AND MOISTURE

5. November 2020

Lingen, 05. November 2020 – Autumn is the season of bad weather, which means lots of dirt and moisture, especially in high-footfall entrance areas. emco dirt collection wells capture large quantities of street dirt and drain moisture optimally, protecting the building's floors. The design possibilities are endless.

Architecturally appealing entrances need harmoniously integrated entrance mats. emco has a clever solution for capturing particularly large amounts of dirt and moisture: dirt collection wells under the entrance mats. The wells with integrated water drainage are used in areas most frequently exposed to dirt and tailored individually to the conditions on site together with the entrance mat.

This combination ensures a strong cleaning effect and allows less frequent deep cleaning. This ultimately reduces cleaning and personnel costs and preserves the value of the interior floors. *"We recommend using dirt collection wells wherever significant quantities of dirt accumulate. If an outdoor mat also has to drain off significant volumes of water, it makes sense to connect the dirt collection well to a drainage system,"* explains Carsten Niehoff, Head of Architecture & Global Accounts at emco Bautechnik GmbH.

Great design flexibility

Depending on the size and shape, an emco dirt collection well system consists of a single-part well or several wells of variable width and depth. The modular construction offers a great deal of scope for design, as custom shapes such as curves or slopes are easy to implement. The aluminium (AlMg 1) material is welded with waterproof seams and is completely smooth on the inside for easy cleaning. On request, the dirt collection wells can be supplied in stainless steel (V2A). The drain device consists of a flat, rustproof stainless steel screen and a lower plastic section for connection to the drainage system.

As a particularly high-performance alternative to the emco dirt collection wells, three different substructures ensure that even extreme levels of dirt can be handled with very infrequent cleaning. These substructures also have the advantage that they can compensate for any height differences in the foundations.

One particularly attractive example is the James-Simon-Galerie on Berlin's

Museum Island, which is equipped with emco Marschall and Plaza entrance mats and substructure A for optimum cleanliness and a welcoming atmosphere.

On-site advice for architects

emco's specialists offer expert services to give architects reliable data for their designs. You can find the most suitable contact [here](#)!

```
<?xml
versio
n="1.
0"
encodi
ng="u
tf-8"?
>
```

Press release (zip)

[Read More](#)

Category: [Press](#)



EMCO 723 DESIGN SWIMMING POOL GRATES - CONNECTING CURVES AND CORNERS

14. October 2020

Lingen, 14. Oktober 2020 – emco swimming pool grates have been a feature of public and private swimming pools for over 50 years. The '723 Design' grate delivers a full range of options for perfect, uniform borders for pools built to exacting design standards with harmonious aesthetics. From November onwards, they will also be available for curved overflow channels.

New curved shapes

The proprietary product, previously available only with straight grating, has been popular among international customers and architects for years: thanks to custom production and the widest possible range of colours for tile and natural stone flooring, the design options are almost unlimited. "With this innovative solution for curved overflow channels, we are literally rounding off our innovative 723 Design product series. The curved products fill in the final gap in the range, allowing even more individual planning," explains Key Account Manager Klaus Meiners.

Bespoke creations

723 Design is an ideal solution for exclusive swimming pools in the private or hotel sector. The grate forms the supporting substructure for the tiles or natural stone flooring. It is available in custom widths, lengths, as straight or curved segments and in two colours. Tiles or natural stone flooring from any manufacturer can be used. Tiles must be at least 8 millimetres thick and have certified anti-slip properties to meet the requirements for wet barefoot areas according to DIN 51097. This means that the same tiles can generally be used as those in the pool borders, offering developers and architects maximum scope for their designs.

The product is durable enough to withstand the typical footfall in pools and compatible with most overflow channels. For compatibility, they require a level support surface without height differences and a constant curve radius throughout the entire overflow channel. As retrofitting is also an option, the

curved product is particularly interesting for swimming pools with Roman steps.

Measurement service

emco draws up design and installation plans for on-site finishing of the grates based on its own measurements or those provided by the customer. On request, members of the emco service team can take all production-relevant measurements on site.

Scope of delivery

Besides the tailored plastic cassette, the customer also receives a detailed set of adhesion instructions, an installation plan and lifting hooks to facilitate lifting of the grates for cleaning. The tiles or natural stones are delivered, cut to size and glued into place on site by the customer's specialist installer.

The product has already won four design and innovation awards and now offers even greater design scope thanks to the new curved option.

```
<?xml
versio
n="1.
0"
encodi
ng="u
tf-8"?
>
```

Press release (zip)

[Read More](#)

Category: [Press](#)



HYGIENIC, TRENDSETTING, SAFE: NEW ATTENTION MATS BY EMCO

16. June 2020

Lingen, June 2020 - During the pandemic, we all have to take new paths. emco Bautechnik was able to respond quickly to the current safety regulations and produce high-visibility attention mats to remind visitors of physical distancing and hygiene requirements in high-footfall entrance areas. Designed for use in retail, municipal institutions, nurseries, schools, hospitals, retirement homes, hotels, the hospitality trade or businesses, the mats are available in a range of different designs and are suitable for a wide variety of applications.

"Physical distancing and hygiene regulations help reduce the risk of infection – that's an essential issue we wanted to address immediately. We were able to react rapidly and have been producing a selection of mat models since the end of March," explains Markus Hummeldorf, Key Account Manager at emco.

The high-visibility attention mats remind visitors to observe the safety regulations. They are also robust and help keep customer areas clean. There are a range of designs and sizes to choose from, making it easy to find the best mat for the application in question. All mats are available at short notice.

"Our attention mats are highly dirt and moisture-absorbent, have an anti-slip nitrile rubber backing and leave no adhesive residues. Besides the new distancing mats in a wide range of designs, we also offer custom products featuring corporate colours and customer logos. We can also deliver formats tailored to the circumstances on site," adds Hummeldorf.

For more information, visit:

<https://www.emco-bau.com/en/aktionen/hinweismatten/>

<?xml
versio
n="1.
0"
encodi

ng="u
tf-8"?
>

Press release (zip)

[Read More](#)

Category: [Press](#)



Lingen, 08. October 2019 – A building's entrance always plays a key role in the overall architectural impression. The entrance mat design is an integral part of that impression. emco from Lingen, Germany, offers a wide range of design options with its versatile products.

In particular in commercial properties such as hotels, museums, theatres or exclusive shopping centres, architecture and design are just as important as functionality. *"We provide colour-anodised frames and aluminium profiles as well as matching profiles in gold, medium bronze, black and stainless steel that offer the perfect solution for every modern entrance with the various insert colours to create a consistent overall colour concept,"* explains Jörg Harbecke, CEO of emco Bau.

This enables developers and designers to either reference shades from the surroundings – wall colours, for example – to achieve a harmonious look, or use contrasts to create special highlights.

Elegant example

In the James-Simon-Galerie on Berlin's Museum Island, the entrance area of the David Chipperfield-designed building features emco Marschall and emco Plaza entrance mats with medium-bronze anodised aluminium profiles. These not only optimally protect the high-quality interior flooring against soiling and wear; combined with the light-grey ribbed carpet inserts, the frames create a look that matches the overall architectural aesthetic superbly.

Stylish, clean, flexible

The individual products can be combined flexibly and coordinate perfectly to form an overall system. The 3-zone cleaning system is a combination of entrance mats and a clean-off, effectively ensuring retention of coarse, fine and wet dirt. As a result, the clean-off systems not only look beautiful, they also protect the rest of the floor from damage and help preserve the property value.

<?xml
versio
n="1.

0"
encodi
ng="u
tf-8"?
>

Press release (zip)

[Read More](#)

Category: [Press](#)

UNCATEGORIZED



DIRT COLLECTION WELLS AND TACTILE GUIDANCE SYSTEMS REFINE INTERIOR DESIGN

Lingen, 9 May 2023 - emco Bautechnik GmbH returned very satisfied from the BAU 2023 trade fair in Munich. The Lingen-based specialist in clean-off floor covering systems had a stand presenting a number of revised highlights from its product range, including the SPIN® SAFE tactile guidance system as well as dirt collection wells.

'We used the size of our display to put a special emphasis on a number of our products for special applications and show how varied the design options are with emco clean-off floor covering systems,' said Marcus de Noni, Regional Sales Manager at emco, recounting the successful BAU 2023 trade fair in April.

A focus on design variety

After a break of more than four years, BAU returned to Trade Fair Center Messe München as the world's leading trade fair for architecture, materials and systems. The organisers were delighted to have more exhibitors than in 2019 and nearly just as many visitors.

emco Bau, based in the town of Lingen, was also pleased by how the fair went. Its large display, which was exposed on three sides, was very busy at all times and saw lots of new contacts being met.

The display focused on the large number of special solutions that are possible

using emco's products. For instance, emco entrance mats and clean-off floor covering systems have coloured anodised aluminium bars and frames that make them an attractive design element. There were models recessed into the floor to show how much coloured aluminium frames enhance emco inserts.

SPIN SAFE® now also for high-performance inserts

The design variety at emco also extends to products for special applications.

SPIN® SAFE, for example, was met with great interest by architects and construction planners. emco now also offers its tactile guidance system with emco Premium high-performance inserts, emco DIPLOMAT entrance mats for normal to heavy loads and emco MARSCHALL for extreme loads as well as for all three entrance mat heights.

Clean-off floor covering systems with SPIN SAFE® close the gap for guidance systems for the blind and vision-impaired from outside to inside. Entrance mat frames in three different heights provide the blind with auditory information through their walking stick to guide the way. People who are strongly vision-impaired are also given orientation through strong contrasts.

Flexible installation options for dirt collection wells

emco also offers designers a great deal of freedom with dirt collection wells for increased dirt capture and excellent water run-off. They can be used with all inserts and MARSCHALL bars and frames from the emco range. There was a podium with wells in various heights to demonstrate all the construction possibilities. The display also showed how different well types and water overflows can be combined with each other.

The dirt collection wells do not have any screws on the bottom, which makes them particularly easy to install. Reinforced with a galvanised steel grate, they are suitable for heavy loads and vehicles can even drive on them.

Product sustainability passports for three emco inserts

The commitment to sustainability at emco Bau received particular praise. emco was one of the first manufacturers of floor coverings and entrance mats to successfully complete product tests based on the BREEAM, LEED and DGNB standards at the TFI – Institute for Floor Systems in Aachen, Germany. Dr

Jacqueline Lemm and Theresa Rüdiger presented Managing Director Jörg Harbecke with corresponding product passports for sustainability. The Care and Maximus insert types for Premium entrance mats as well as the rough-fibre ribbed carpet for Original entrance mats were inspected by the TFI. Further examinations are under way.

Emco-BAU23-Exponate-3825.jpg

This podium showed the design options available with emco's dirt collection wells. (Image: emco Bautechnik GmbH)

Emco-BAU23-Front-3865.jpg

Appealing design highlights can be made with coloured anodised aluminium bars and frames. emco Bau presented a range of examples on the floor of its display. (Image: emco Bautechnik GmbH)

Emco-BAU23-GesEckL-3841.jpg

Emco-BAU23-GesEckR-3885.jpg

emco put a focus on the theme of design variety at its spacious display at BAU 2023. (Image: emco Bautechnik GmbH)

<?xml
versio
n="1.
0"
encodi
ng="u
tf-8"?
>

Press release (zip)

[Read More](#)

Category: [Press](#), [Uncategorized](#)

