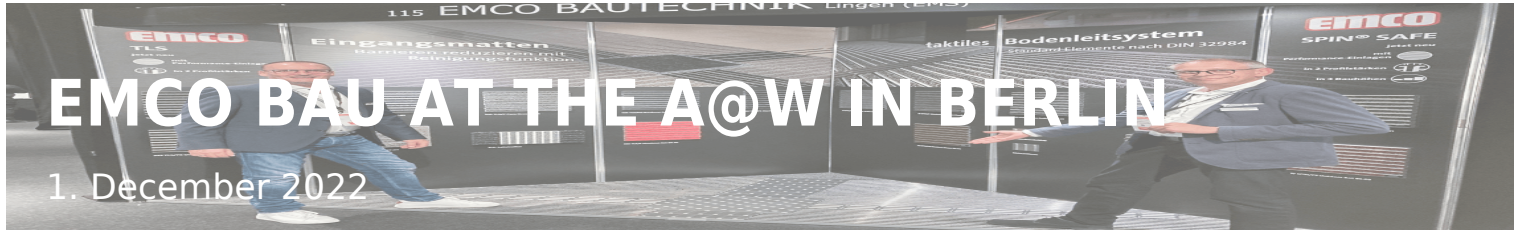


# MAGAZINE



ARCHITECT@WORK took place again in Berlin on 19 and 20 October 2022. emco Bau was there as an exhibitor and looks back on a successful participation. First of all, it is very pleasing that visitor numbers were again at the pre-pandemic level with just under 3,300. The fair's supporters have obviously remained loyal to it over the difficult period, and new architecture and design fans have joined in.

ARCHITECT@WORK took place again in Berlin on 19 and 20 October 2022. emco Bau was there as an exhibitor and looks back on a successful participation. First of all, it is very pleasing that visitor numbers were again at the pre-pandemic level with just under 3,300. The fair's supporters have obviously remained loyal to it over the difficult period, and new architecture and design fans have joined in.

The demand for news from the areas of materials, products and projects is great, which also became clear in the top-class guest lectures by architects and experts, who shared their experiences with the numerous audience members. Not only the great variety of perspectives and ways of thinking, but also the opportunity for intensive personal exchange determined the trade fair events and brought many new impulses and ideas. There was also a lively exchange at the exhibition stands - no wonder that the exhibitors were also more than satisfied. This was also the case for emco Bau ...

## Great success for emco Bau

Andreas Oellrich (Architectural Consultant, Field Service Region West, in the picture on the left) and Andreas Plonka (Architectural Consultant, Field Service Region East, in the picture on the right) were part of the emco team on site and give a brief insight into their impressions of the fair.

What was your experience at this year's architect@work - what kind of feedback did you get from the visitors?

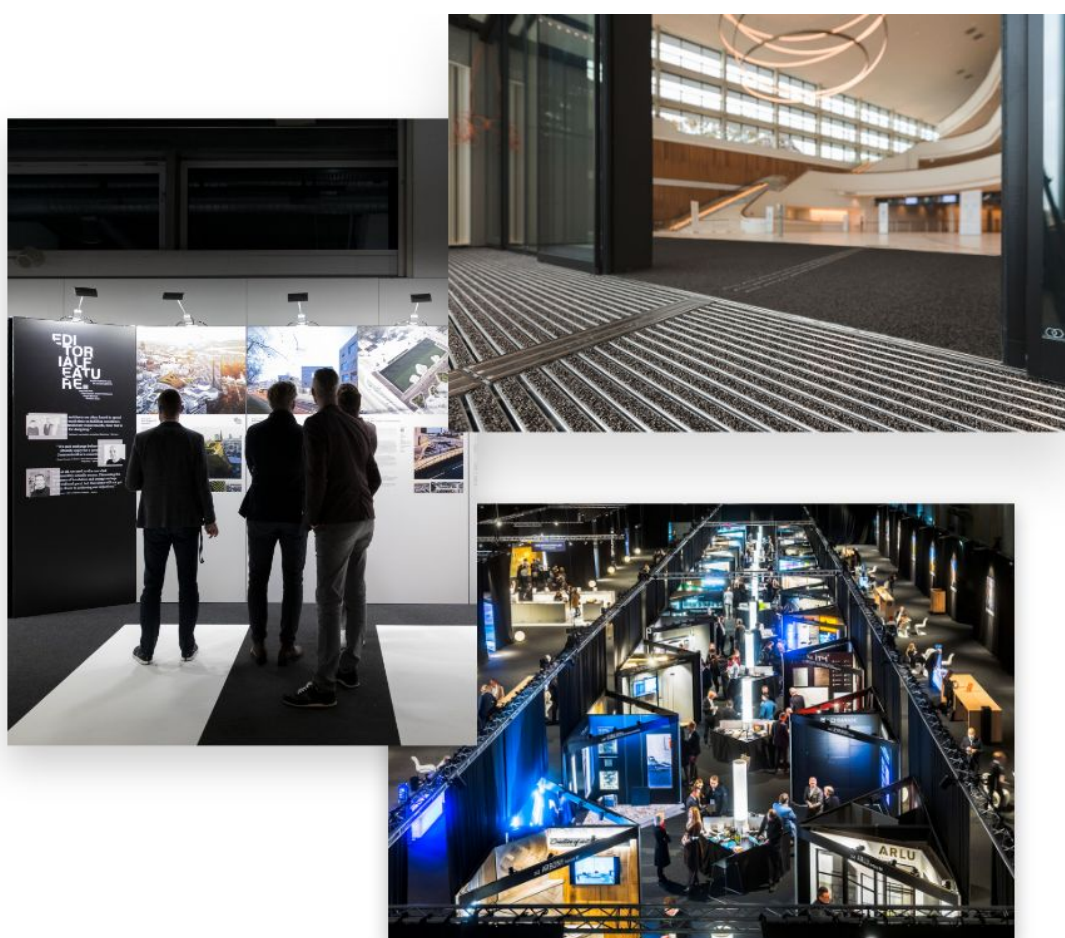
**Andreas Oellrich:** Once again, we found that emco is very well known as a brand in the area of commercial entrance mats and commercial entrance carpets, which became clear in the discussions.

**Andreas Plonka:** The guests we spoke to at the stand were all enthusiastic about the trade fair - a great event for everyone involved.

What were the main topics discussed at the stand?

**Oellrich:** Our main topic was accessibility and especially our tactile guidance systems ...

**Plonka:** ... the products presented in this regard included the SpinSafe and TLS systems, in combination with our premium collection.



The focus was therefore on tactile guidance systems and thus on the topic of accessibility. What does emco offer architects in this regard?

**Oellrich:** In addition to the optimally matched products, we offer architects professional needs assessment and advice as well as extensive information material: via brochures and samples as well as on our website and social media channels, for example LinkedIn.

**Plonka:** What is particularly convincing is the high degree of design freedom we offer - with two variants and our services, such as planning support and on-site

measurement and fitting.

What is particularly important to the target group?

Plonka: In the discussions at the stand, it became clear that architects particularly appreciate emco-specific tender texts ...

Oellrich: ... in addition, they would like to be able to try out the product for themselves using a blind long stick.

What core messages did emco Bau convey at the trade fair?

Plonka: With our two variants, we demonstrated that accessibility for visually impaired people can also be achieved with our Commercial entrance mats without interruption.

Oellrich: In addition, we underlined our expertise in the area of needs assessment and consulting and were thus able to show once again that we are the professionals in the area of commercial entrance mats and commercial entrance carpets systems.

## The tactile guidance systems from emco

Commercial entrance carpets system can meet the requirements of wayfinding. Since every guest enters a building through an entrance, it is important that no barriers are created here. emco Bau has developed excellent innovations for this challenge with three sophisticated Tactile Guidance Systems that close the tactile gap in the vestibule and entrance area to the inside of the building in the indoor and covered outdoor area and function excellently as a guidance system in the building. Different inlays, profile heights and thicknesses offer many design options here

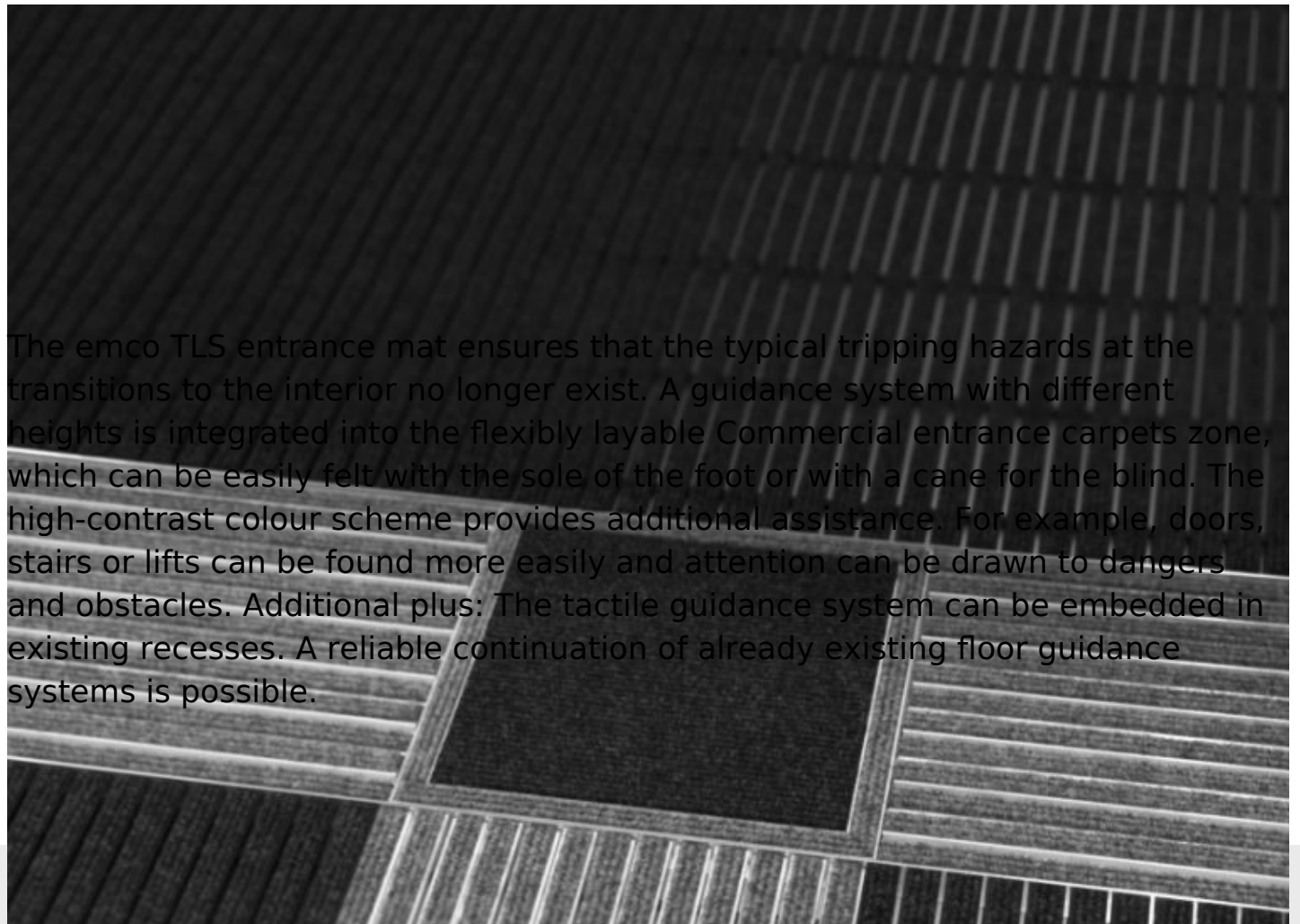


In vestibules and entrance areas, a gap in the guidance system for the blind quickly becomes a dangerous tripping hazard for blind and visually impaired people. SpinSafe solves the problem as a seamless guidance system in entrances with an integrated dirt trap system. The Commercial entrance mats innovation

with integrated stainless steel elements enables good orientation, directions and changes of direction can be easily and clearly felt with the feet or a cane for the blind. The tactile floor information complies with the standards of DIN 32984. In addition to the tactile floor indicators, the auditory impression also changes significantly when a blind person's cane is used. This also makes it easier to find doors, stairs and lifts. Different inlays, material heights and profile thicknesses make SpinSafe a high-quality solution for architects, because it can be used to create visually harmonious pathways.



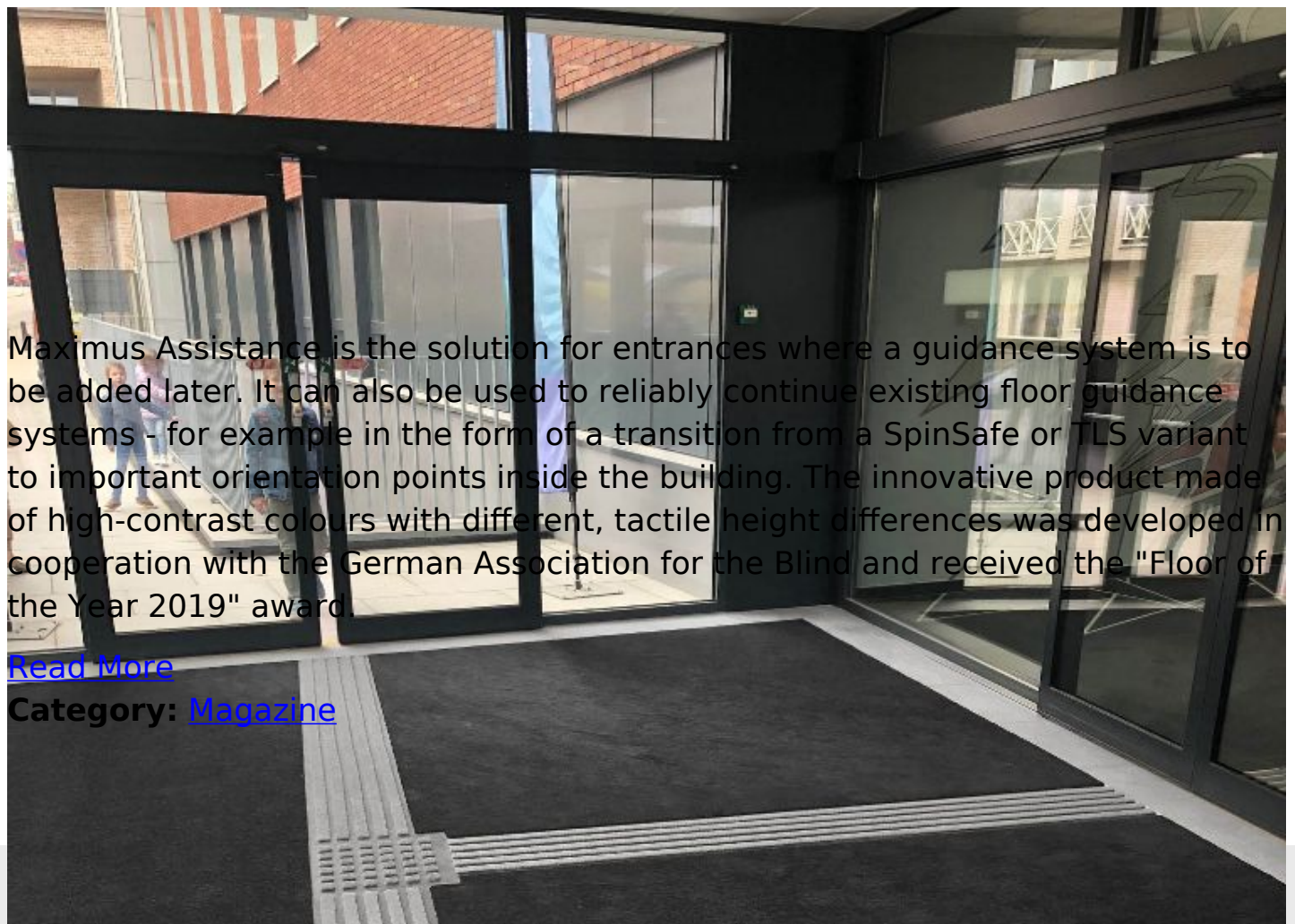




The emco TLS entrance mat ensures that the typical tripping hazards at the transitions to the interior no longer exist. A guidance system with different heights is integrated into the flexibly layable Commercial entrance carpets zone, which can be easily felt with the sole of the foot or with a cane for the blind. The high-contrast colour scheme provides additional assistance. For example, doors, stairs or lifts can be found more easily and attention can be drawn to dangers and obstacles. Additional plus: The tactile guidance system can be embedded in existing recesses. A reliable continuation of already existing floor guidance systems is possible.







Maximus Assistance is the solution for entrances where a guidance system is to be added later. It can also be used to reliably continue existing floor guidance systems - for example in the form of a transition from a SpinSafe or TLS variant to important orientation points inside the building. The innovative product made of high-contrast colours with different, tactile height differences was developed in cooperation with the German Association for the Blind and received the "Floor of the Year 2019" award.

[Read More](#)

**Category:** [Magazine](#)





Over 1200 years ago, Emperor Charlemagne made Aachen the centre of his legendary empire. He built his residence on the ruins of Roman baths between 790 and 800 with the octagonal Palatine chapel as its centrepiece. Today, Aachen cathedral is one of the best-maintained architectural monuments of the Carolingian period and is a magnet for visitors from around the world. Deeply enmeshed in European history and the birth of Germany, this heterogeneous building complex is a hugely symbolic attraction in the middle of the historic old town. The experiment conducted by the TFI Aachen institute in this famous architectural monument is more than just symbolic. It used the emco 3-zone cleaning system laid on site as a test strip to measure the amount of dirt it absorbed. It proved to be a convincing demonstration.

Over 1200 years ago, Emperor Charlemagne made Aachen the centre of his legendary empire. He built his residence on the ruins of Roman baths between 790 and 800 with the octagonal Palatine chapel as its centrepiece. Today, Aachen cathedral is one of the best-maintained architectural monuments of the Carolingian period and is a magnet for visitors from around the world. Deeply enmeshed in European history and the birth of Germany, this heterogeneous building complex is a hugely symbolic attraction in the middle of the historic old town. The experiment conducted by the TFI Aachen institute in this famous architectural monument is more than just symbolic. It used the [emco 3-zone cleaning system](#) laid on site as a test strip to measure the amount of dirt it absorbed. It proved to be a convincing demonstration.



In 1978, Aachen Cathedral became the first building in Germany and only the second building ever to be granted World Heritage status. It remains a popular tourist destination today for both believers and historians. The UNESCO provisions state that the town centre is also to be preserved as a historic entity. The building is therefore also protected from the outside. In order to ensure its silhouette and lines of sight are not interrupted, a buffer zone was defined around the cathedral within which building is prohibited. Approximately 1.2 million people pass through its doors every year. The emco 3-zone cleaning system was installed in the entrance to the cathedral to significantly reduce the dirt visitors bring into the building and therefore protect its structure. What makes the Aachen cathedral project special is that the [TFI Aachen](#) institute used the emco 3-zone cleaning system as a test strip.





From July 2020, the number of visitors over the following twelve months was recorded and the dirt levels were determined in the emco MARSCHALL Original (side entrances), [emco MARSCHALL Premium](#) (main entrance, or Wolf's Door, and the vestibule), and emco Clean Off (at the base of the stairs). Over the observation period, approximately 423,000 people passed through the entrances. The TFI team cleaned the entrance mats every week to determine the dirt levels and scanned the material to document changes in appearance.








Due to the pandemic, visitors had to be guided through the entrance area. The protective measures had to be taken into consideration but this also had an impact on the dirt uptake. The inserts in the the side entrance and exit mats (Zone 1) absorbed on average 275 grammes each month. This was 144 grammes in Zone 2 and 121 grammes in Zone 3. In total, the emco entrance mats absorbed 540 grammes of dirt every month. Additional dirt trapped by the spacing in the profiles was not taken into consideration. Irrespective of this, it can be said that the [3-zone cleaning system](#) has a long-lasting impact on multiple levels: it protects adjacent flooring from wear and damage and reduces contamination, thus extending cleaning cycles and the consumption of cleaning chemicals.











It would also have been possible to reduce the quantity of dirt and moisture in Zone 3 if Zones 1 and 2 had been longer, as more dirt would have been absorbed over the greater distance. Unfortunately, this was not possible in the west entrance due to the configuration of the building, a common problem in historic buildings which require special solutions to survive for centuries. "Aachen Cathedral is lifetime's work for the cathedral master builder – it is a site that must be maintained for future generations," explains Helmut Mairitz, Cathedral Master Builder since 2000. The [emco 3-zone cleaning system](#) clearly supports this goal as the effective dirt uptake protects the interior of Aachen cathedral and thus contributes to preserving this precious structure, ensuring it is available for future generations to visit.

Please do not hesitate to contact us for help with your project.

[Read More](#)

**Category:** [Magazine](#)



# RENOVATION & EFFICIENCY

2. October 2022

We already knew this at the 13th International Architecture Exhibition, the Venice Biennale: 'reduce, reuse, recycle' is the mantra of our time, meaning building redevelopment should take precedence over newbuilds. With this in mind, architects now have to provide comprehensive advice to the developers they are working with on all matters regarding energy-efficient renovation. This is all based on holistic thinking and planning which covers the building envelope and technology, renewable energy, and the opportunities provided by smart building. The details, such as entrance mats, which are so much more than just dirt collectors, should not be ignored in all of this

We already knew this at the 13th International Architecture Exhibition, the Venice Biennale: 'reduce, reuse, recycle' is the mantra of our time, meaning building redevelopment should take precedence over newbuilds. With this in mind, architects now have to provide comprehensive advice to the developers they are working with on all matters regarding energy-efficient renovation. This is all based on holistic thinking and planning which covers the building envelope and technology, renewable energy, and the opportunities provided by smart building. The details, such as entrance mats, which are so much more than just dirt collectors, should not be ignored in all of this

## **Ecological renovation and creating living spaces**

The two topics on everyone's lips today are building efficiency and the creation of living spaces. Here, architects prefer to renovate existing structures rather than creating newbuilds and the BdA (Association of German Architects) also makes reference to the disastrous ecological consequences and costs of newbuilds. On the one hand is the gas-guzzling construction machinery and lorries which are needed to transport materials, and on the other, the production of construction materials, which devours vast quantities of (fossil) energy, resulting in high CO2 emissions. In addition to this, excessive amounts of finite resources such as gravel, sand, clay and ores are being consumed.





## Architects for Future: Appreciating what is available

The issues raised by Fridays for Future have now also reached the architectural profession. Architects for Future is demanding the number of renovations increases from one to at least four per cent. The fact that the Parisian architect Anne Lacaton and her partner Jean-Philippe Vassal won the Pritzker Architecture Prize for their conversion projects proves that this takes creativity and forward-thinking and can succeed at the highest level. There are other reasons to renovate. Building authorities are not keeping up with applications for newbuilds and there is a shortage of materials. Architects for Future therefore demands an end to random demolition and new construction, and the control of demolition permits. Such an ecological measure would be conducive to building redevelopment.



# When standards become a stumbling block

What makes building redevelopment really difficult is the labyrinth of local standards. Many standards and building specifications are easier to implement in newbuilds than renovations. The nightmare of liability prevents many from seeking out unconventional solutions. People are now talking about a conversion regulation which would reset the priorities, a law favouring building redevelopment over newbuilds, creating the requisite room for manoeuvre. And many prominent examples of spiralling costs and out of control schedules act as a discouragement in addition to the pile of standards. For example, costs doubled at the Deutsches Museum in Munich during renovation. To be able to make building redevelopment cheaper and more sustainable, Architects for Future is calling for a new 'E' type building to which some of the over 3,000 standards do not apply.





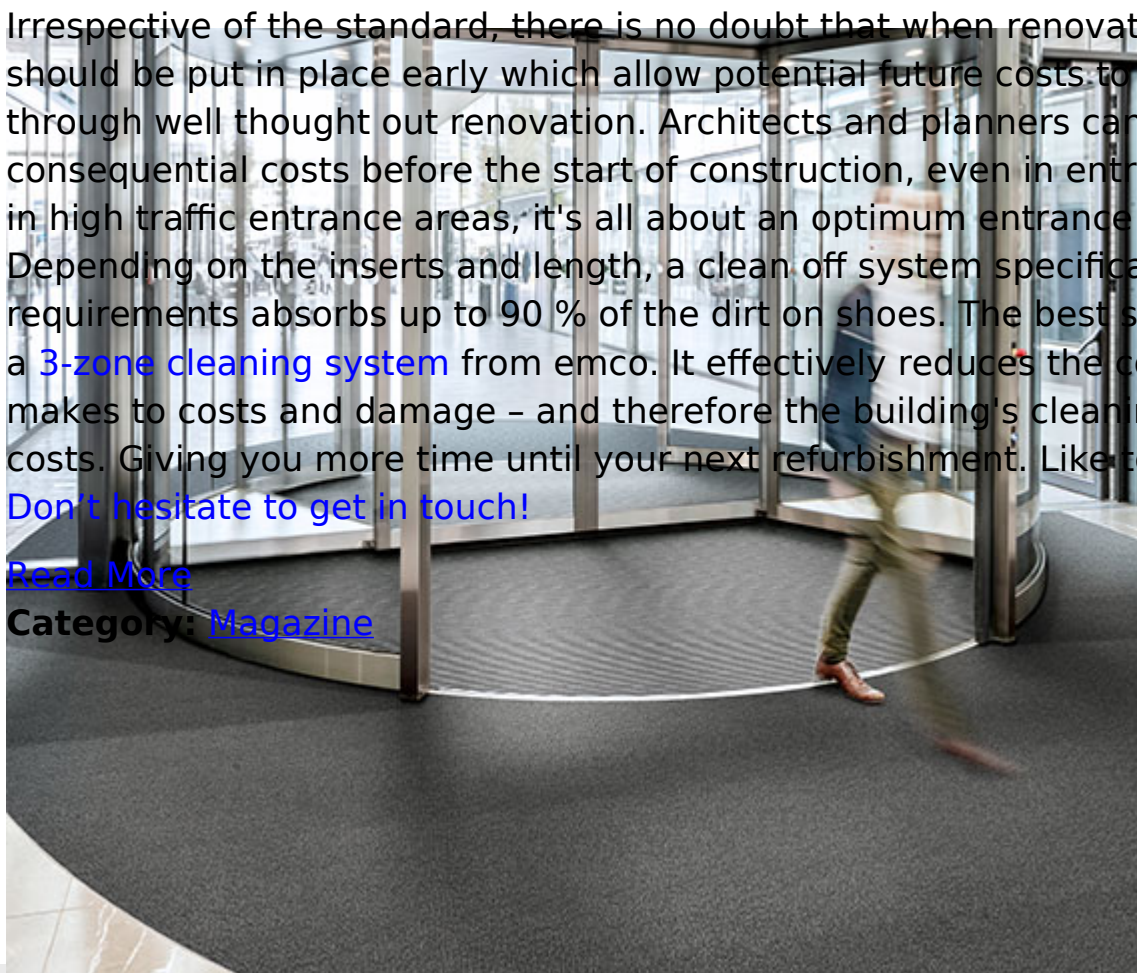
## Planning in clean off zones from the start

Irrespective of the standard, there is no doubt that when renovating, plans should be put in place early which allow potential future costs to be saved through well thought out renovation. Architects and planners can prevent consequential costs before the start of construction, even in entrance areas. And in high traffic entrance areas, it's all about an optimum entrance mat system. Depending on the inserts and length, a clean off system specifically adapted to requirements absorbs up to 90 % of the dirt on shoes. The best solution for you is a [3-zone cleaning system](#) from emco. It effectively reduces the contribution dirt makes to costs and damage – and therefore the building's cleaning intervals and costs. Giving you more time until your next refurbishment. Like to know more?

[Don't hesitate to get in touch!](#)

[Read More](#)

Category: [Magazine](#)





# VACATION IN THE HOTEL

4. August 2022

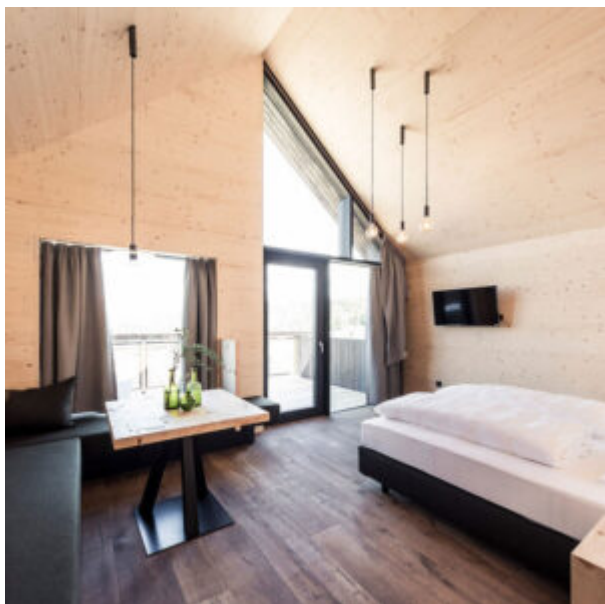
The summer vacations are here - and finally vacations without Corona restrictions again. Destinations around the world are now beckoning, from vibrant metropolises to dream beaches and undisturbed hideaways. The only question is, where to stay? Do you prefer a hotel or a vacation home? Both have their advantages, but the hotel offers more comfort. If you decide to stay in an architectural gem, you can be happy even before you enter your vacation home. One such gem is the Hotel Pfösl in South Tyrol.



Hotel Pfösl in Südtirol, Fotografie von © Florian Andergassen

The jewel in the midst of beautiful nature can impress with an impressive list of awards in the field of architecture - here is just a selection: archilovers best project 2017 and 2019, AIT award best interior and architecture 2018, AIT platform sonderpreis hotel architektur 2017, Häuser des Jahres 2020 (shortlist), London international creative competition 2019 (shortlist), Bigsee wood award - Ljubljana 2019, Premio in/architettura 2020 ... Behind all this is a thoughtful, modern architecture, about which the architect couple Michaela Wolf and Gerd Bergmeister say: "A continuation of building in the existing, an integration of the listed barn, a building in the landscape. It is about connections between new and old by means of path clearing and purposefully placed measures, which form a unity with the whole. The landscape becomes the theme, becomes part of the architecture and vice versa. A withdrawal, a search for consciously chosen positions. A disappearance in the landscape. Here, too, the material as a connecting element between old and new, between inside and outside." This describes very well the merging of the new building with the listed structure and

surroundings.





*Hotel Pfösl in South Tyrol, photography by © Florian Andergassen*

The jewel in the midst of beautiful nature can impress with an impressive list of awards in the field of architecture - here is just a selection: archilovers best project 2017 and 2019, AIT award best interior and architecture 2018, AIT platform sonderpreis hotel architektur 2017, Häuser des Jahres 2020 (shortlist), London international creative competition 2019 (shortlist), Bigsee wood award - Ljubliana 2019, Premio in/architettura 2020 ... Behind all this is a thoughtful, modern architecture, about which the architect couple Michaela Wolf and Gerd Bergmeister say: "A continuation of building in the existing, an integration of the listed barn, a building in the landscape. It is about connections between new and old by means of path clearing and purposefully placed measures, which form a unity with the whole. The landscape becomes the theme, becomes part of the architecture and vice versa. A withdrawal, a search for consciously chosen positions. A disappearance in the landscape. Here, too, the material as a connecting element between old and new, between inside and outside." This describes very well the merging of the new building with the listed structure and surroundings.

Just the right place to finally recharge your batteries after a long lean period. Especially now, after the pandemic years, many long for an all-around soothing vacation, either to really relax again or to finally see something other than their own four walls and the familiar city. In any case, it is pleasant to be accommodated in a good hotel and not have to worry about anything but your own needs.

**Let everything fall away from you in the hotel -**

## it's so easy

Check in, forget about your job, responsibilities and everything else - and let yourself be pampered all around. This is not only possible in South Tyrol, but is a general advantage of hotel vacations. Whether it's shopping or making up the bed, cooking or renting a car - that's taken care of by others who are also familiar with the local customs. Many things can be booked before the start of the trip (rental cars, excursions, restaurant visits) and make vacation planning much easier. A nice place to rely on others and give yourself over completely to your vacation is the Ruby Hotel in Düsseldorf.





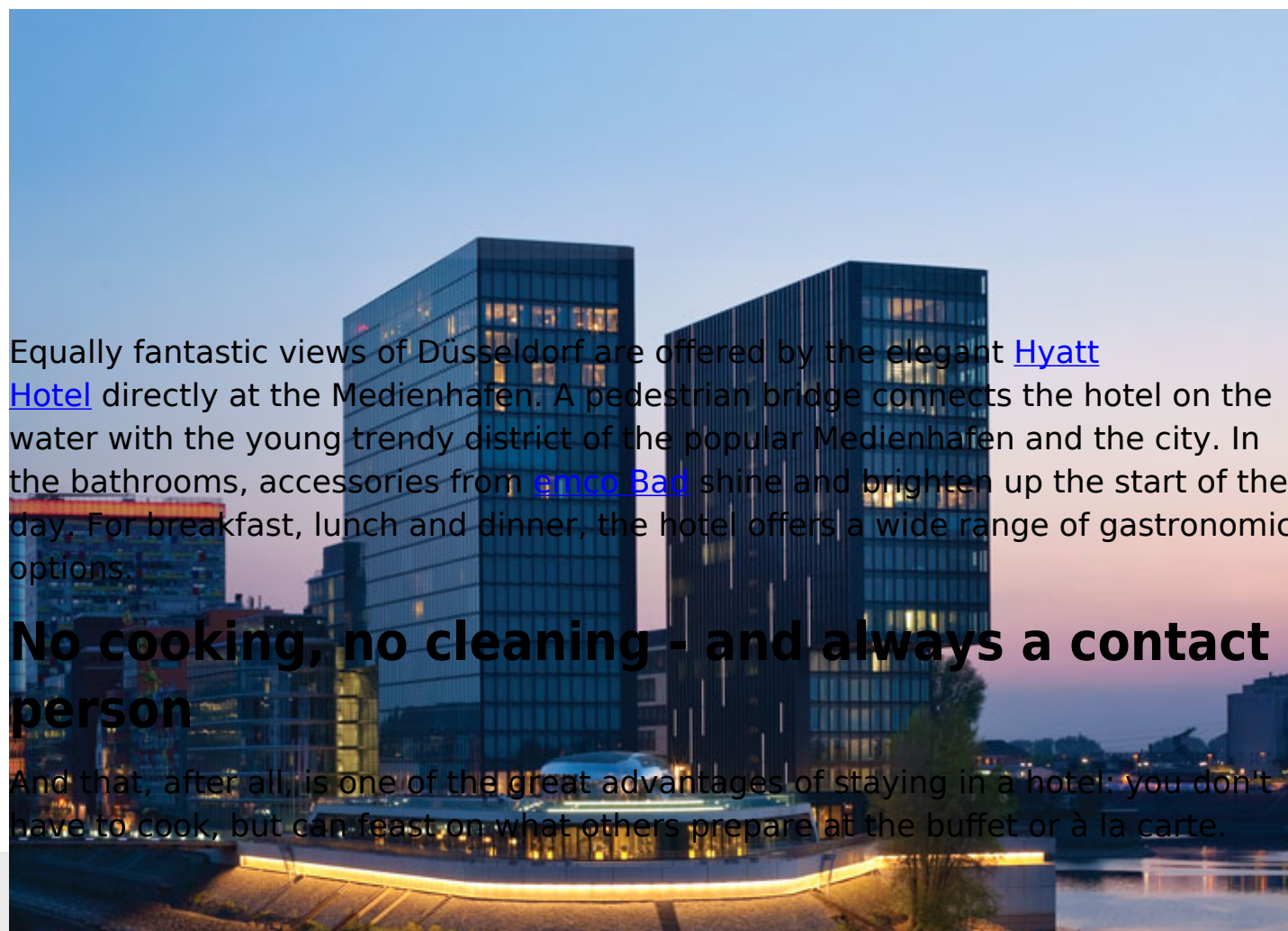
Ruby Hotel in Düsseldorf, © Ruby Hotel

Here, HPP Architekten have conjured up a stylish welcome ambience on 13 floors

from the former Commerzbank high-rise, which is a listed building. To this end, the high-rise was stripped back to its shell and refurbished - including a spacious roof terrace and DGNB Gold certification. In 1998, the building with its style-defining construction and its curtain wall, which is considered the first elemental high-rise façade in Germany, was listed as a historic monument. Particularly striking: the rounded window openings, through which one can enjoy a great view of the Rhine metropolis.







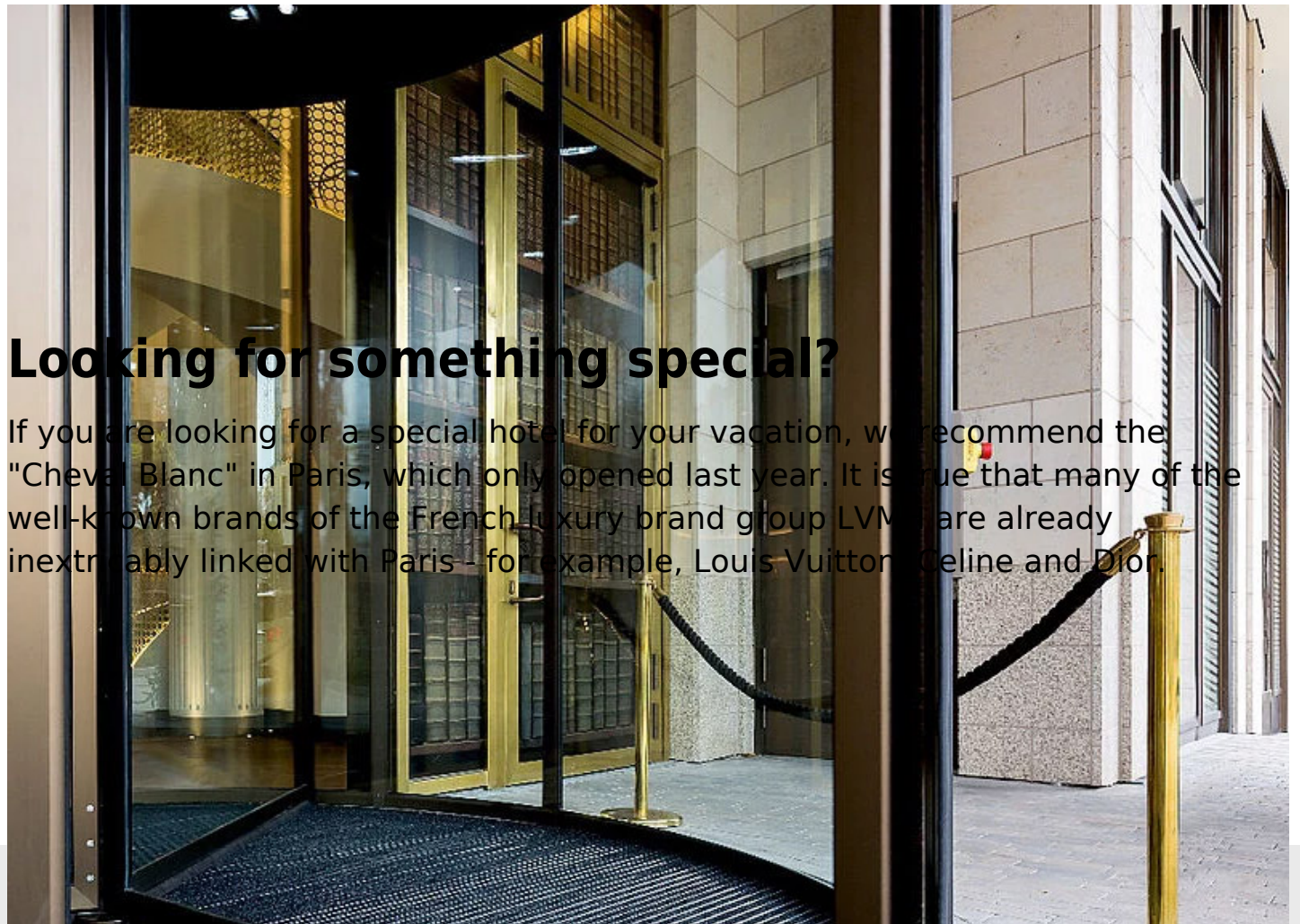
Equally fantastic views of Düsseldorf are offered by the elegant [Hyatt Hotel](#) directly at the Medienhafen. A pedestrian bridge connects the hotel on the water with the young trendy district of the popular Medienhafen and the city. In the bathrooms, accessories from [emco Bad](#) shine and brighten up the start of the day. For breakfast, lunch and dinner, the hotel offers a wide range of gastronomic options.

## **No cooking, no cleaning - and always a contact person**

And that, after all, is one of the great advantages of staying in a hotel: you don't have to cook, but can feast on what others prepare at the buffet or à la carte.

Cocktails are available in the hotel bar - and anyone planning a vacation with children would be well advised to book a hotel with a children's program. If there are problems with the room, pool or food, or if you've suffered a minor injury or need an insider's tip, a hotel complex has a contact person around the clock, as is the case at the [Sofitel Frankfurt](#) - here you can relax in the spa area or enjoy the cultural offerings around the hotel. A dedicated team is on hand to answer guests' questions, and entrance mats from emco ensure cleanliness right from the entrance. The impressive [Galaxy Casino & Hotels](#) in Macau or the [AccorHotels Arena](#) in the French capital Paris are just two of many other tips equipped with emco cleanliness systems.

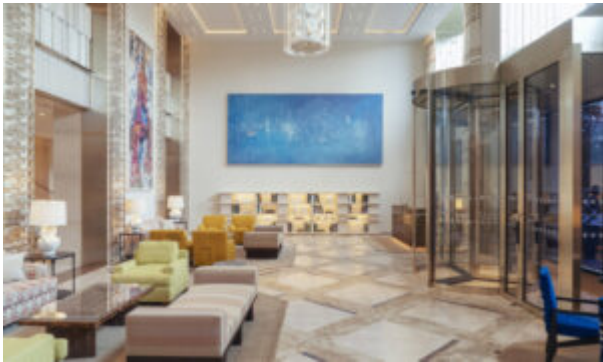


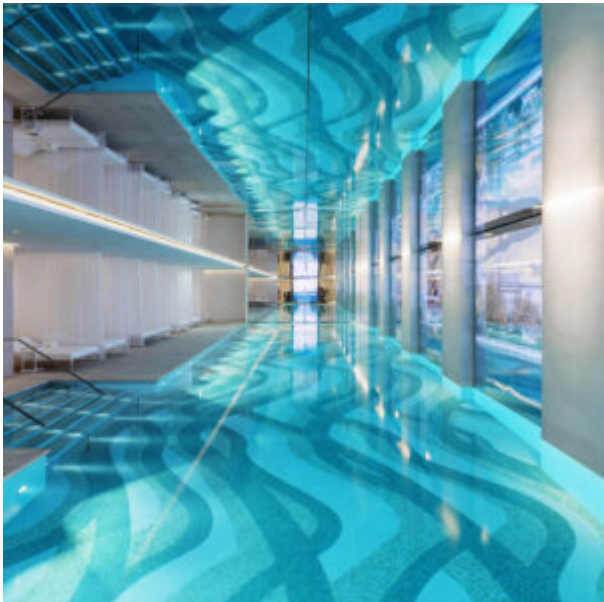


## Looking for something special?

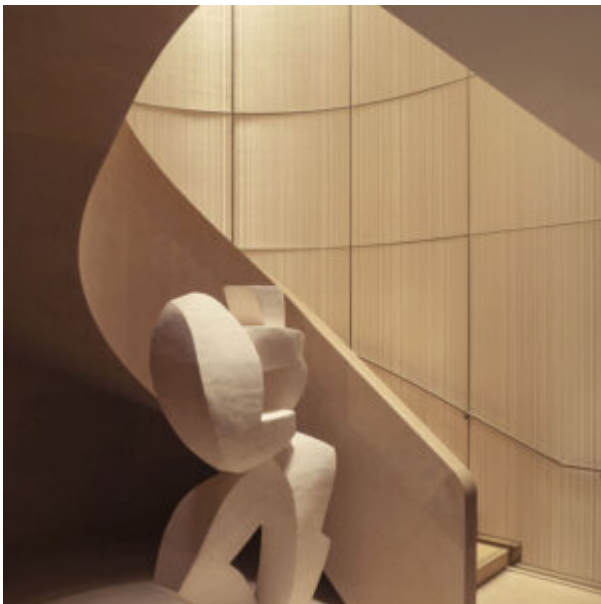
If you are looking for a special hotel for your vacation, we recommend the "Cheval Blanc" in Paris, which only opened last year. It is true that many of the well-known brands of the French luxury brand group LVMH are already inextricably linked with Paris - for example, Louis Vuitton, Celine and Dior.











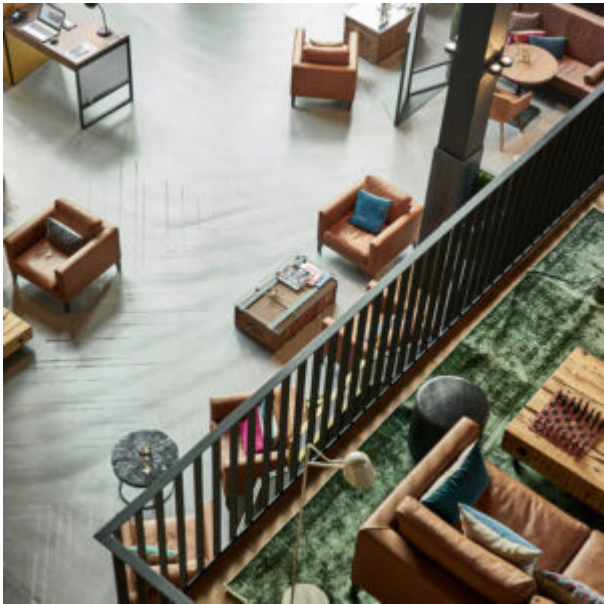
But the company's hotel brand is now represented in the French capital for the first time. Architect Peter Marino has created a magnificent luxury gem in an Art Deco department store from 1928, originally designed by Henri Sauvage. The interior is filled with valuable vintage furniture, for example by Maria Pergay, Charlotte Perriand and Jean Lurçat.

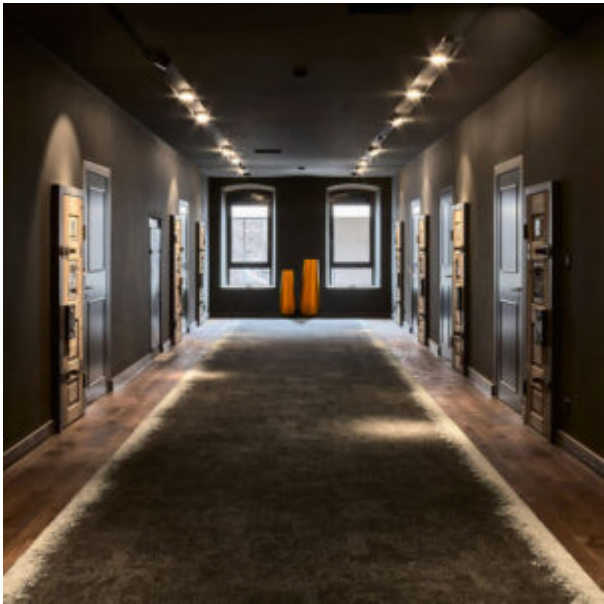
The Hotel Liberty in Offenburg boasts award-winning architecture. Historic prison



buildings now house a modern luxury hotel. The original function of the walls is present everywhere.









The industrial-designed rooms naturally meet all the requirements of a 5-star hotel and surprise with precious details - a feast for design lovers. We wish you a wonderful vacation! And if you are still looking for a worthwhile destination, you will find many more exciting [references](#) from emco here!

[Read More](#)

**Category:** [Magazine](#)







In educational facilities such as schools, universities and kindergartens, clean-off systems have many different tasks which are specific to the building. In addition to dirt uptake, they reduce walking noise and contribute to a quieter ambience in the midst of hectic activity. The entrance mats should be just as hard-wearing as the indoor floor coverings – it is worth investing here as direct dirt uptake in the entrance area saves on cleaning and maintenance costs. emco was the preferred partner for the Juridicum building in Kiel, primarily for reasons of barrier-free access.

In educational facilities such as schools, universities and kindergartens, clean-off systems have many different tasks which are [specific to the building](#). In addition to dirt uptake, they reduce walking noise and contribute to a quieter ambience in the midst of hectic activity. The entrance mats should be just as hard-wearing as the indoor floor coverings – it is worth investing here as direct dirt uptake in the entrance area saves on cleaning and maintenance costs. emco was the preferred partner for the Juridicum building in Kiel, primarily for reasons of barrier-free access.

The law faculty at the Christian-Albrecht-University of Kiel (CAU) has a history that goes back over 350-years. However, while knowledge has been accumulating, time has been taking its toll on the facilities. A barrier-free renovation was required and emco provided the solution in Kiel with a [tactile guidance system](#). The new faculty building opened in October 2020.



The **Juridicum** is a research and teaching facility and a key element of an extensive scheme to modernise the Kiel campus. The state charged the building management company Gebäudemanagement Schleswig-Holstein AöR (GMSH) with the implementation of this project. The building comprises a compact plinth zone with two interlocking wings above. The foyer, service areas and seminar rooms are located in the plinth while the institute rooms of the faculty are above. Once the building work was complete, 161 staff and 12,000 metres of books were installed over a floor space of 7,200 square metres, on five floors. The service area in the foyer, including a bakery, print shop, ice-cream parlour and cycle shop, adds to the facilities offered on campus. The state-of-the-art Juridicum offers all the best options for working and socialising.





Bild: © GMSH. Fotografin: Birgit Schewe

The low-emission clean off zones provide both **dirt and moisture reduction** and sound absorbing insulation for the 21 metre wide and 91 metre long building. In addition to this, they solve a frequently occurring problem: there is often a gap in the guidance system for the visually impaired in the transition from street to building which can be dangerous.

“When planning this public building, it was also important to make sure it was as safe as possible for everyone. Ensuring the latest measures are in place for people to move safely around a building is becoming an increasingly important consideration for planners and architects. Certified fire behaviour, **low-emission manufacture**, managing walking noise, and cleaning intervals all have a part to play,” explains Tim Lüdrichsen, Head of Building Work at CAU.







The emco Diplomat TLS entrance mats in the Juridicum ensure the typical trip hazards at the transition into a building, such as unexpected edges, a change in floor covering, or insufficiently tactile substrates, are a thing of the past. A guidance system with different heights is integrated into the clean off zone, which can be designed as required. These are easily identified through the soles of the feet or with a cane. The high-contrast colouring provides further assistance, providing safe guidance into the interior of the building. It makes it easier to locate, for example, doors, stairs or lifts, and points out hazards or obstructions:

A further benefit of the [tactile guidance system](#) is that it can be combined in many different ways with existing floor coverings to provide a reliable continuation of the floor guidance systems already in place. The tread surface comprises robust, recessed, weather-proof ribbed carpet strips and rigid aluminium profiles with sound insulation underlay.





[Read More](#)

**Category:** [Magazine](#)







# BARRIER-FREE ACCESS PARAMOUNT IMPORTANCE

15. February 2022

Barrier-free access impacts every aspect of life: places and rooms as well as means of communication. Not having barrier-free access into these areas makes it impossible for all those affected to access cultural and political life as well as work and leisure activities, which can include young and old people with a disability or temporary impairment. Barrier-free access affects us all. Why? Only 4 % of all disabilities are congenital; most are a result of illness or accidents. And, approximately 25 % of people with a severe disability are 75 or older, and a half are between 55 and 75. And the average age is increasing – for all of us. \*

Barrier-free access impacts every aspect of life: places and rooms as well as means of communication. Not having barrier-free access into these areas makes it impossible for all those affected to access cultural and political life as well as work and leisure activities, which can include young and old people with a disability or temporary impairment. Barrier-free access affects us all. Why? Only 4 % of all disabilities are congenital; most are a result of illness or accidents. And, approximately 25 % of people with a severe disability are 75 or older, and a half are between 55 and 75. And the average age is increasing – for all of us. \*

Barrier-free access means much more than just ramps, wide doorways and low-floor buses. To achieve barrier-free living, buildings and spaces, work places and homes, means of transport and objects, services and leisure facilities must be accessible to everyone without assistance. This includes lifts and ramps as well as easy read forms in simple language, sign language interpreters, and barrier-free access to the digital world. Barrier-free access obviously helps everyone: parents with pushchairs use lifts as well as people with reduced mobility, simple language helps people with learning disabilities as well as those who do not speak or understand the language well.

## Building barrier-free access

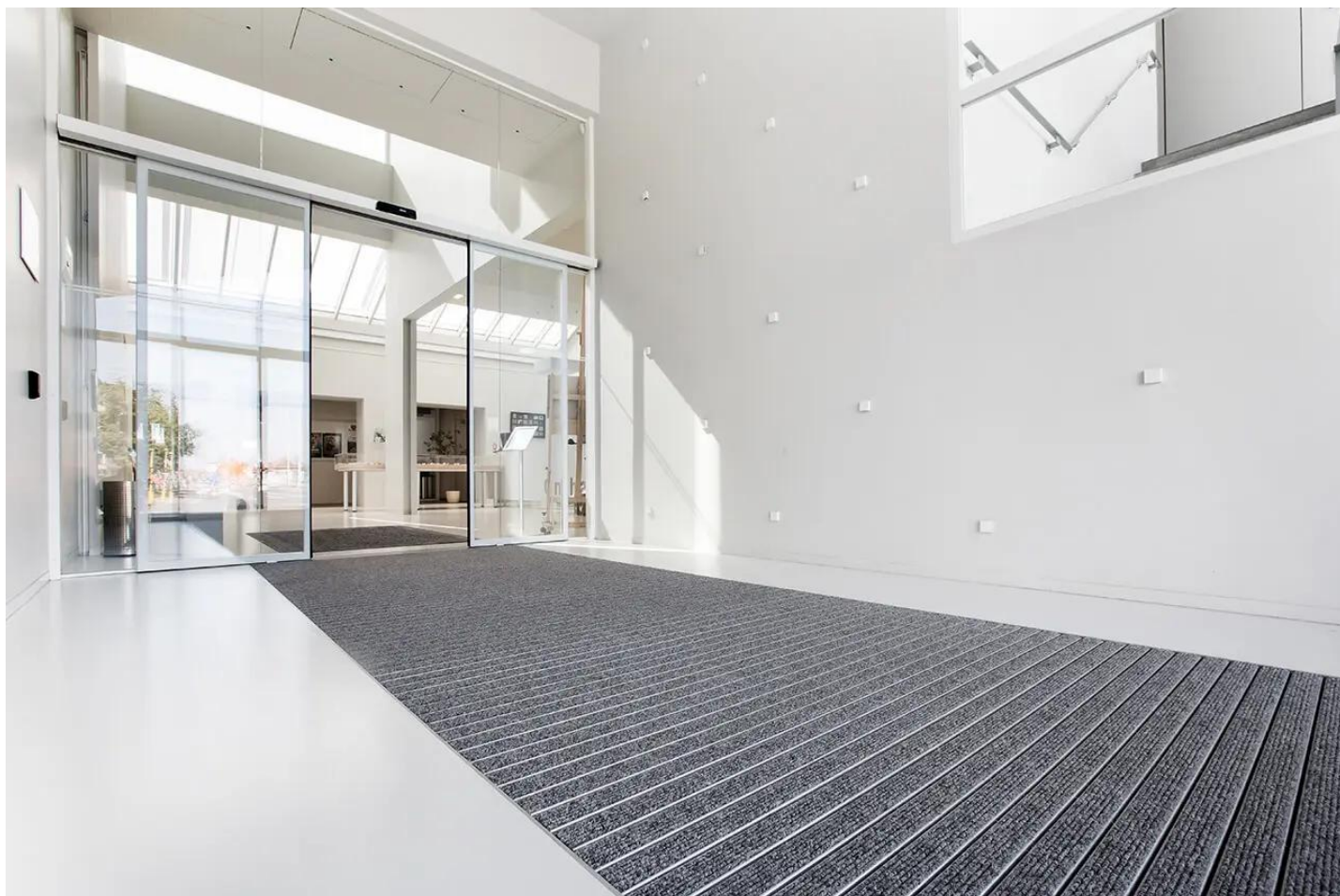
Urbanisation of public spaces also means minimising hazards for everyone. Both the general understanding of modern life and legal provisions are adapting to this and up-to-date measures to ensure people using a building can do so safely are becoming more and more important – and not just for planners and architects. In spite of this, there is still a long way to go to achieve barrier-free access.

Inadequate barrier-free access is clearly visible in our built environment, for example, if a lift is out of order or door bells are located out of reach of wheelchair users. The regulations for building barrier-free access should remedy this. For example, there are DIN standards for stairs and lifts as well as for floor surface indicators, guidance systems, tactile and acoustic warnings. The DIN standard 18040 – Construction of accessible buildings, section 4.3.3 Doors states:

Doors must be clearly discernible, easy to open and close, and safe to pass through.

Floor-level door stops and thresholds are not permissible. If they are essential for technical reasons, they not be any higher than 2 cm.

Cognitive disabilities such as blindness and visual impairment should therefore be taken into consideration during the planning phase – and the entrance mat system must obviously not represent a trip hazard in doorways. Tactile guidance systems can make it significantly easier for blind people and those with a visual impairment to orient themselves when they enter a building. Appropriate guidance systems are already in place in many outdoor areas such as pavements and squares. If a guidance system for the blind is also in place in the indoor areas of a building, the outdoor and indoor guidance systems are often interrupted by the floor mat in the entrance area creating an unnecessary barrier which makes it difficult to find the route again.



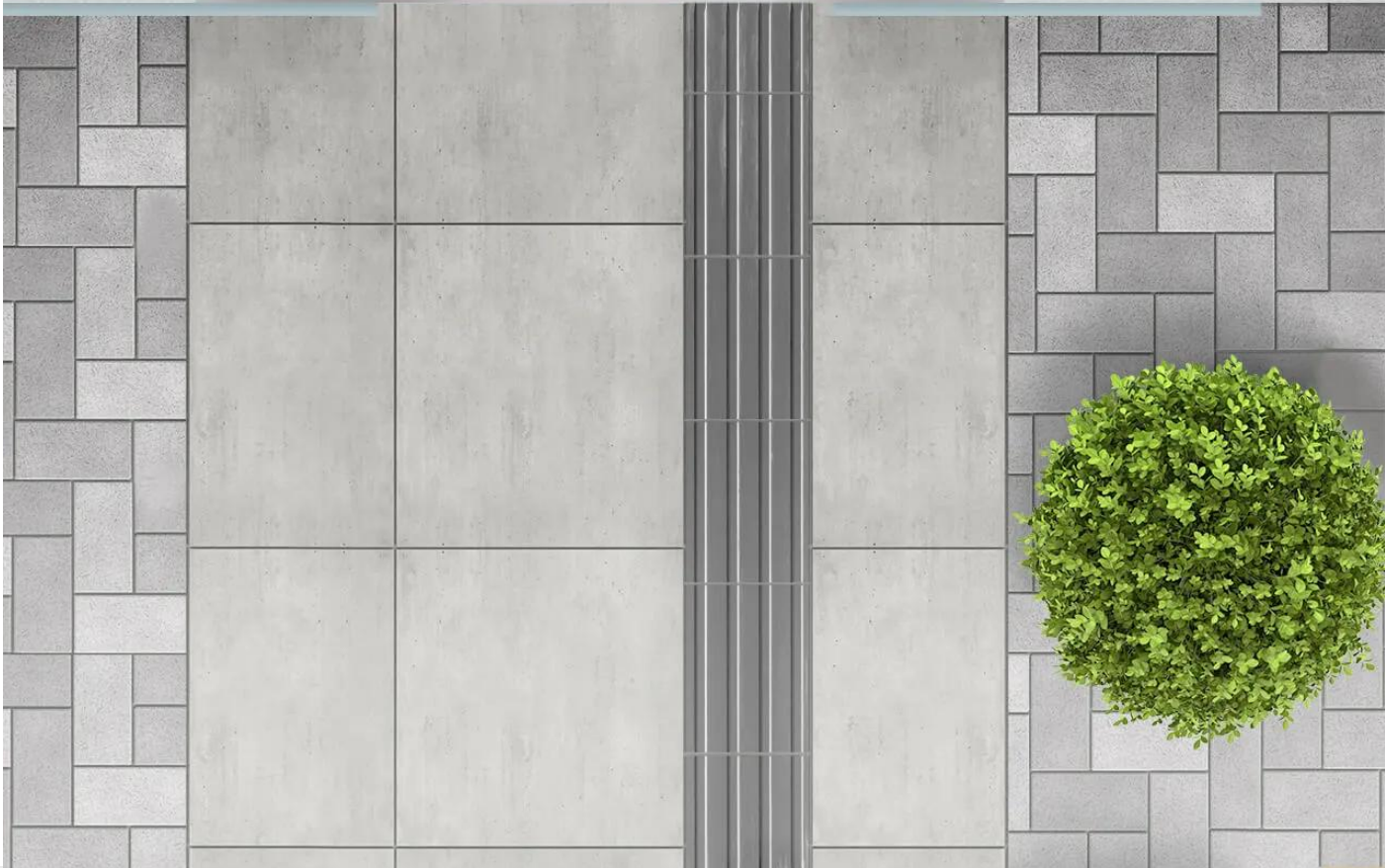
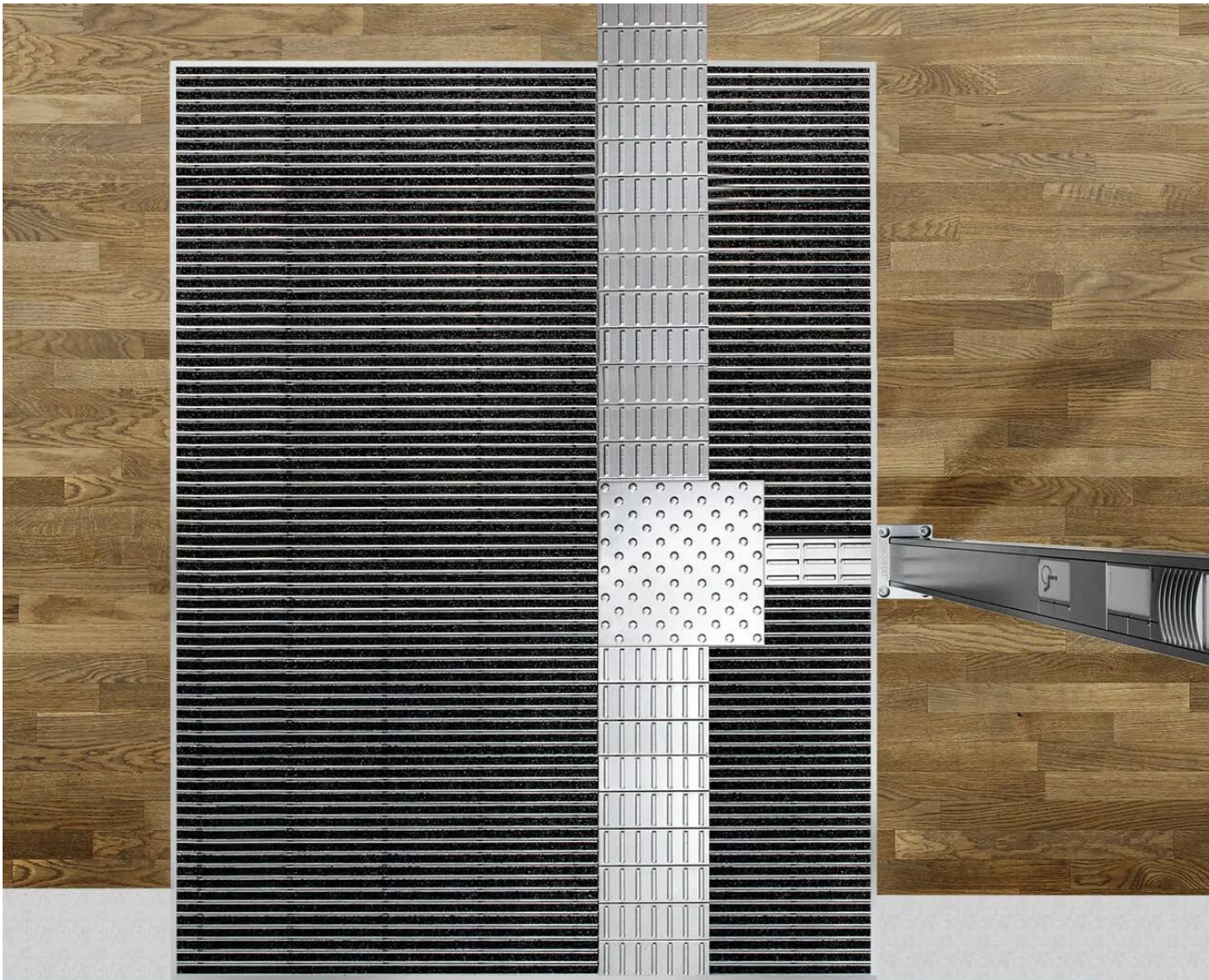
## DIN-compliant solution

Together with Hoba Steel, a manufacturer of guidance systems for the blind for indoor and covered outdoor areas and specialist in stainless steel wall and floor concepts, emco bau has developed an [entrance mat](#) with an integral guidance system for the blind. This solution combines the outdoor guidance system with the indoor floor surface indicators. The emco SPIN® SAFE tactile guidance system satisfies the highest functional demands and is also aesthetically pleasing as it offers a consistent optical appearance made from stainless steel as soon as the entrance mat is accessed. The guidance system complies with all the requirements to DIN 32984 Tactile walking surface indicators in public areas, which specifies the requirements for floor surface indicators and other guidance elements. Its aim is to optimise the safety and mobility of blind and visually impaired people in public spaces. The standard therefore applies to areas to which the public has access. To this end, it defines the shape and dimensions of the profiles, for example, and the required light/dark contrast of the floor surface indicators and many other aspects.

## emco tactile guidance system

emco SPIN® SAFE, with its perfect combination of cleaning functionality, tactile floor-level information and effective brightness contrast, complies with the requirements and is already being used in entrance areas in hospitals, banks, office buildings and rehabilitation centres. This [tactile guidance system](#) reduces barriers for blind people and the visually impaired in these areas and can be integrated into many emco entrance mats. emco SPIN® SAFE allows blind and partially sighted people to easily and clearly detect directions and changes in direction with their feet or canes. However, the robust stainless steel elements offer even more benefits: in addition to being tactile floor surface indicators, they produce a clear change in the auditory response when using a cane.





## Other barrier-free solutions

The emco TLS tactile guidance system for the blind is a technical alternative which complies with the light/dark contrast requirements of international standards. Lateral profiles support both the tactile guidance and the system's exceptional cleaning capacity. Thanks to the slightly different heights, they can be detected when walking with the soles of the feet and with the aid of a cane. This guidance system for the blind enables blind and visually impaired people to find doors, stairs, lifts, etc. and provides orientation in larger areas. The guidance system also highlights obstructions and hazards. The floor guidance system also make it easier for people without any visual impairment to orient themselves. The material offers high levels of contrast for people with limited vision and can therefore be more easily distinguished from the usual entrance mat.

The emco offer for the blind and visually impaired is rounded off by the emco MAXIMUS® ASSISTANCE clean off mat with its integral tactile floor guidance system. It can be installed in different ways and makes orientation and location of destinations easier in entrance areas and buildings. It can be also used as a reliable continuation of existing floor guidance systems – for example as a transition from the pavement to the building into the interior. What's more, the guidance system, which can be integrated into the mat however you choose, provides floor information at different heights that can be felt both with the sole of the foot and with a cane. High-contrast colouring offers additional assistance. emco MAXIMUS® ASSISTANCE is particularly suitable for retrofitting.

[Read More](#)

**Category:** [Magazine](#)



